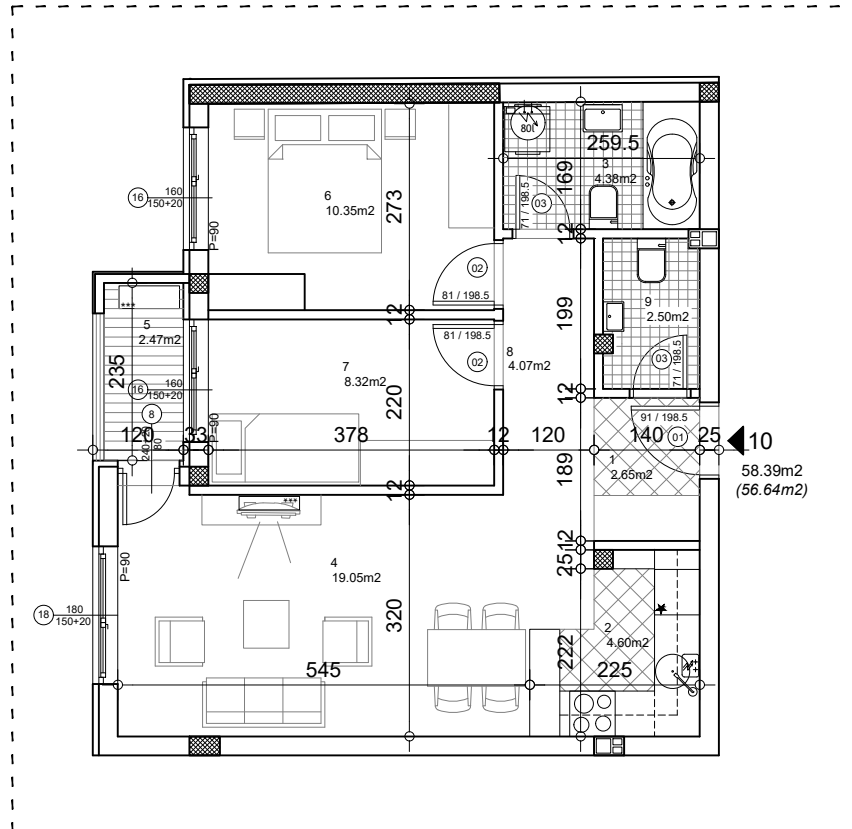


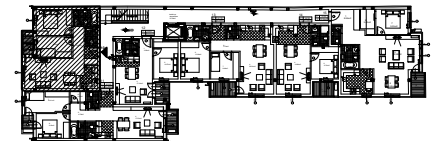
osnova stana



STAN 10 - trosoban

| | | | | |
|-------------------|--------|--------------|--------------|-------------|
| ulaz | 1 | 2.65 | 2.57 | klas.parket |
| kuhinja | 2 | 4.60 | 4.46 | keramika |
| kupatilo | 3 | 4.38 | 4.25 | keramika |
| dn.soba sa trpez. | 4 | 19.05 | 18.48 | klas.parket |
| balkon | 5 | 2.47 | 2.40 | keramika |
| sp.soba | 6 | 10.35 | 10.04 | klas.parket |
| sp.soba | 7 | 8.32 | 8.07 | klas.parket |
| hodnik | 8 | 4.07 | 3.95 | klas.parket |
| wc | 9 | 2.50 | 2.43 | keramika |
| | ukupno | 58.39 | 56.64 | |

OSNOVA 2. SPRATA



ULIČNA FASADA

