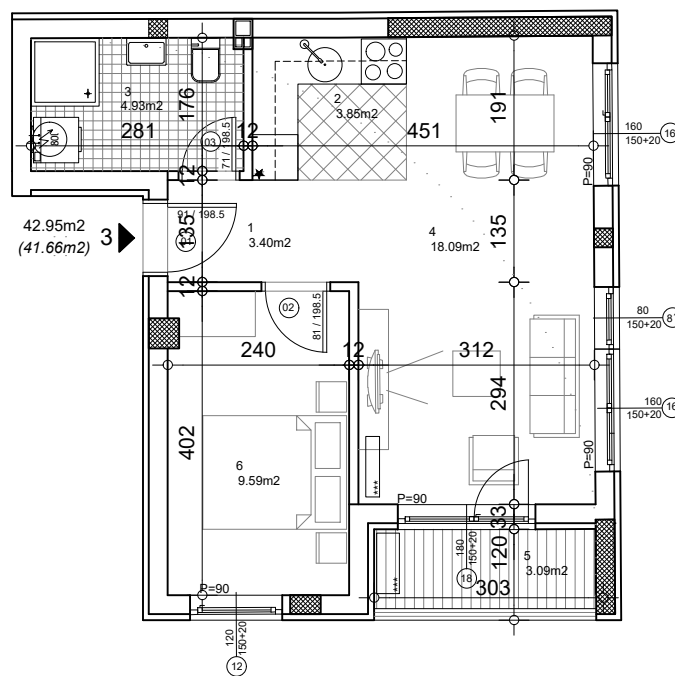


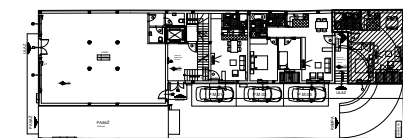
## osnova stana



## STAN 3 - dvosoban

ulaz	1	3.40	3.30	klas. parket
kuhinja	2	3.85	3.73	keramika
kupatilo	3	4.93	4.78	keramika
dnevna soba	4	18.09	17.55	klas. parket
balkon	5	3.09	3.00	keramika
sp. soba	6	9.59	9.30	klas. parket
	ukupno	42.95	41.66	

## OSNOVA PRIZEMLJA



## ULIČNA FASADA

