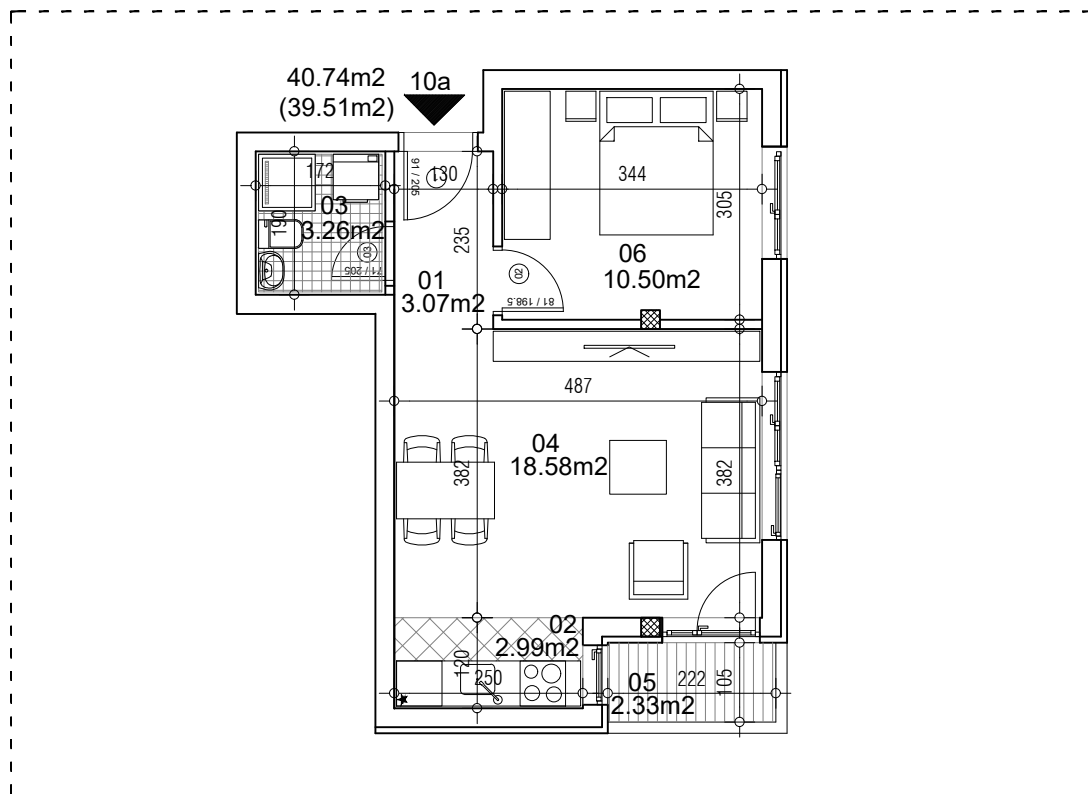


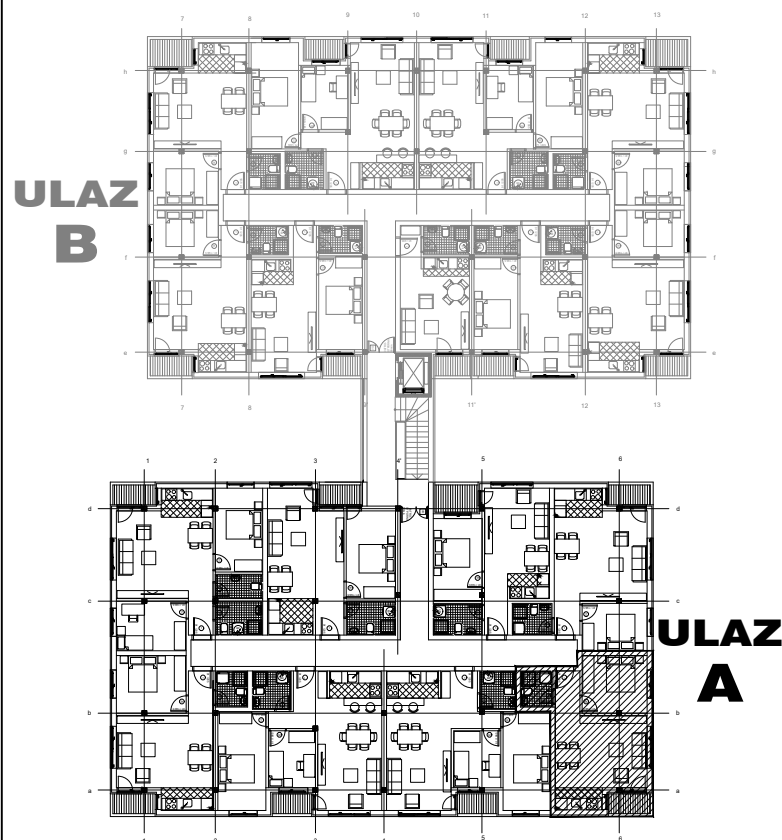
osnova stana
R = 1:100



STAN 10a DVOSOBAN

1	ULAZNI HODNIK	3.07m²
2	KUHINJA	2.99m²
3	KUPATILO	3.26m²
4	DNEVNA SOBA	18.58m²
5	TERASA	2.33m²
6	SPAVAĆA SOBA	10.50m²
UKUPNO STAN 10a :		40.74m²
		- 3% (39.51m²)

OSNOVA I SPRATA



ulica Ćirila i Metodija br.50-52-54

ULAZ A: I SPRAT/STAN 10a