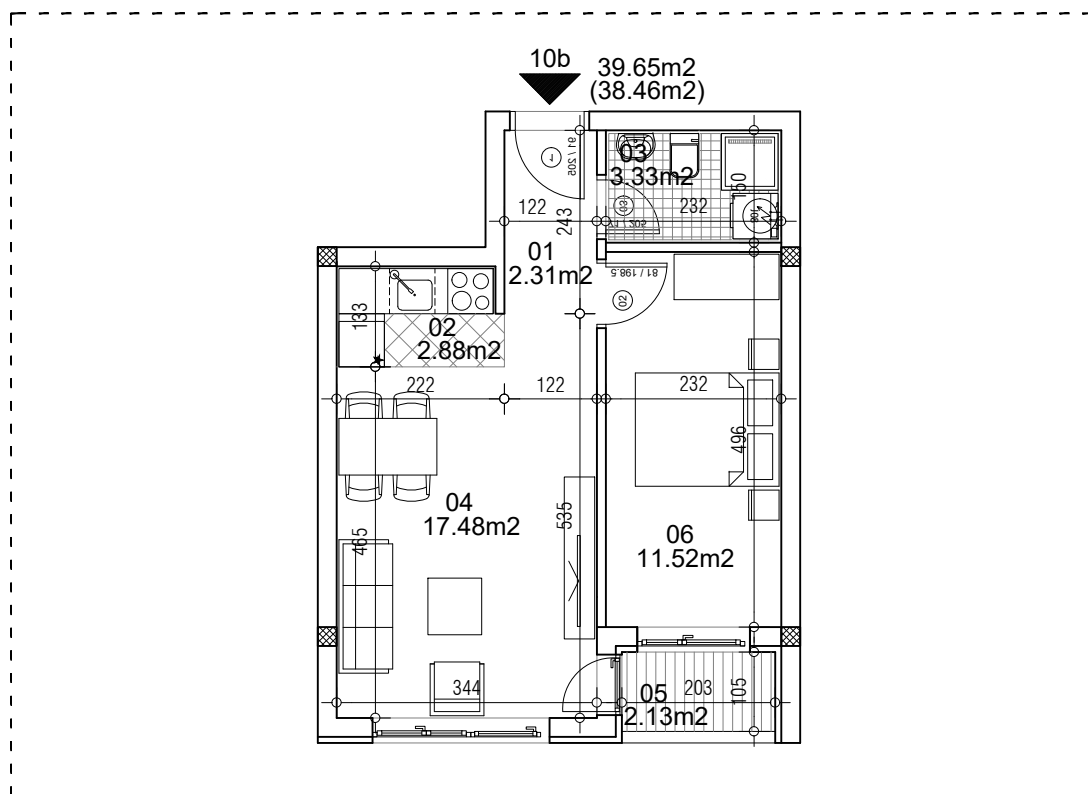


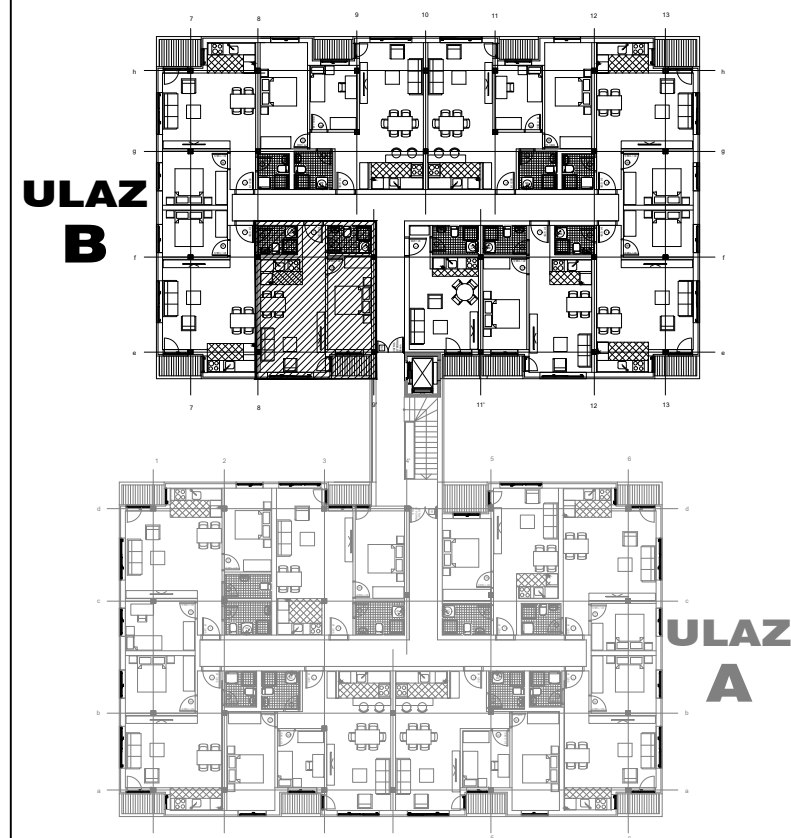
osnova stana
R = 1:100



STAN 10b DVOSOBAN

| | | |
|--------------------------|----------------------|----------------------------------|
| 1 | ULAZNI HODNIK | 2.31m² |
| 2 | KUHINJA | 2.88m² |
| 3 | KUPATILO | 3.33m² |
| 4 | DNEVNA SOBA | 17.48m² |
| 5 | TERASA | 2.13m² |
| 6 | SPAVAĆA SOBA | 11.52m² |
| UKUPNO STAN 10b : | | 39.65m² |
| | | - 3% (38.46m²) |

OSNOVA I SPRATA



ulica Ćirila i Metodija br.50-52-54

ULAZ B: I SPRAT/STAN 10b