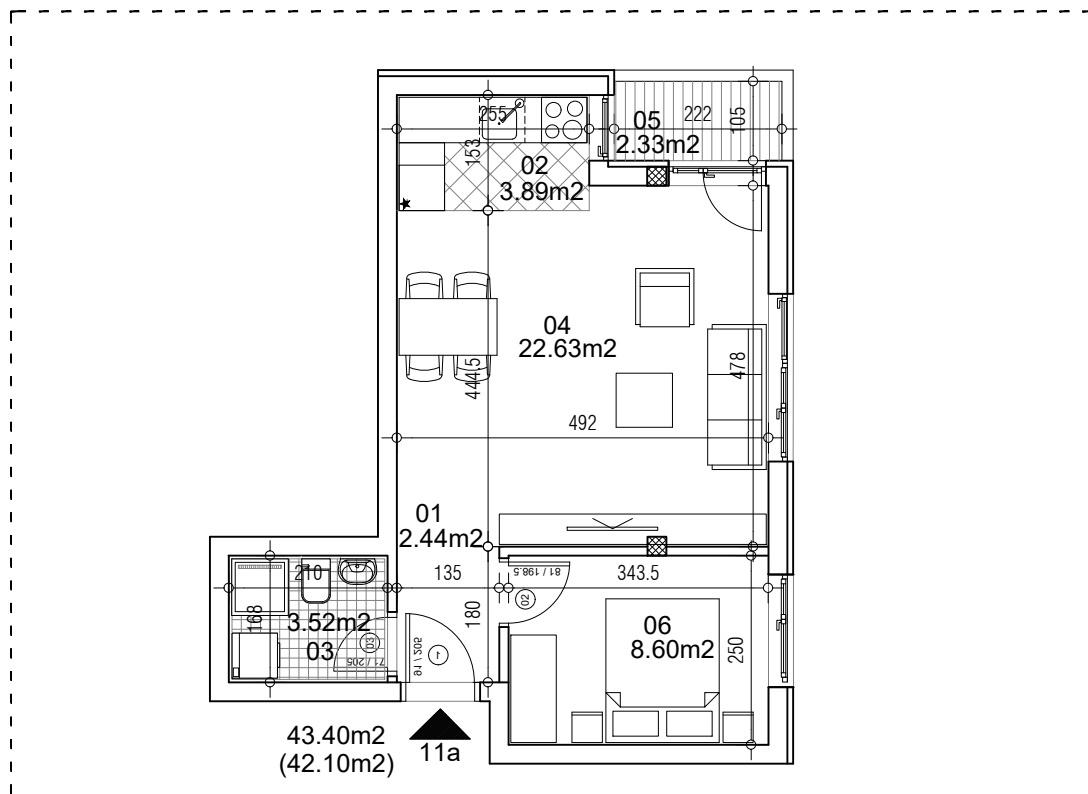


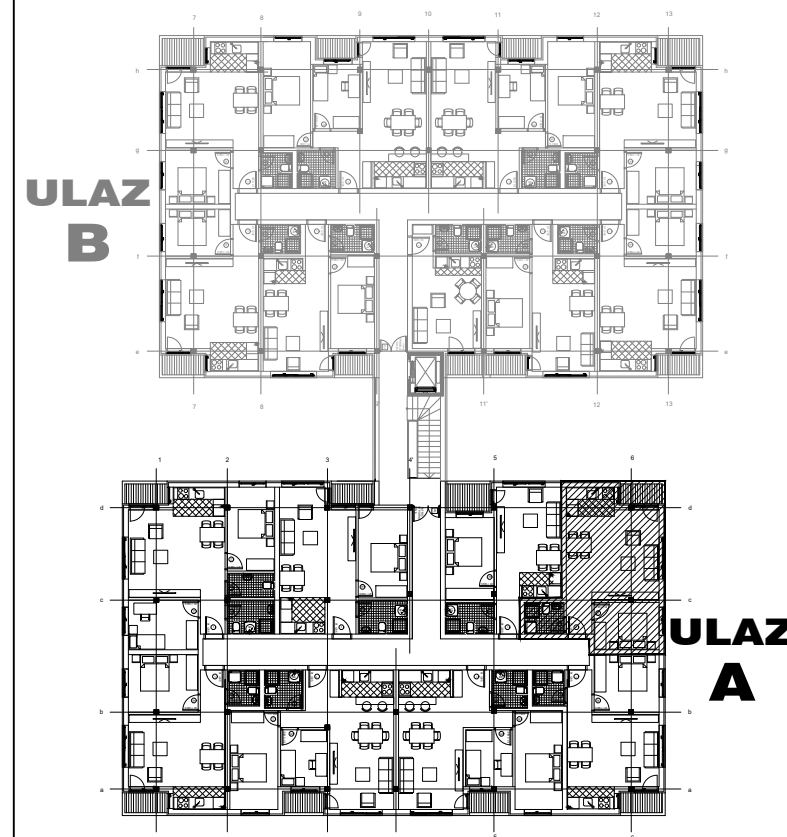
osnova stana
R = 1:100



STAN 11a DVOSOBAN

1	ULAZNI HODNIK	2.44m ²
2	KUHINJA	3.89m ²
3	KUPATILO	3.52m ²
4	DNEVNA SOBA	22.63m ²
5	TERASA	2.33m ²
6	SPAVAĆA SOBA	8.60m ²
UKUPNO STAN 11a :		43.40m ²
		- 3% (42.10m ²)

OSNOVA PRIZEMLJA



ulica Ćirila i Metodija br.50-52-54

ULAZ A: I SPRAT/STAN 11a