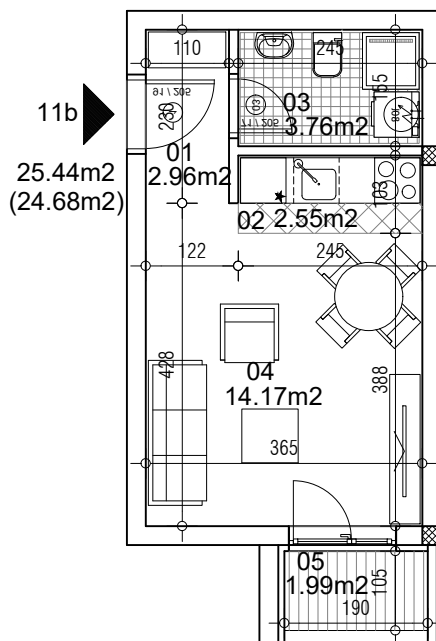


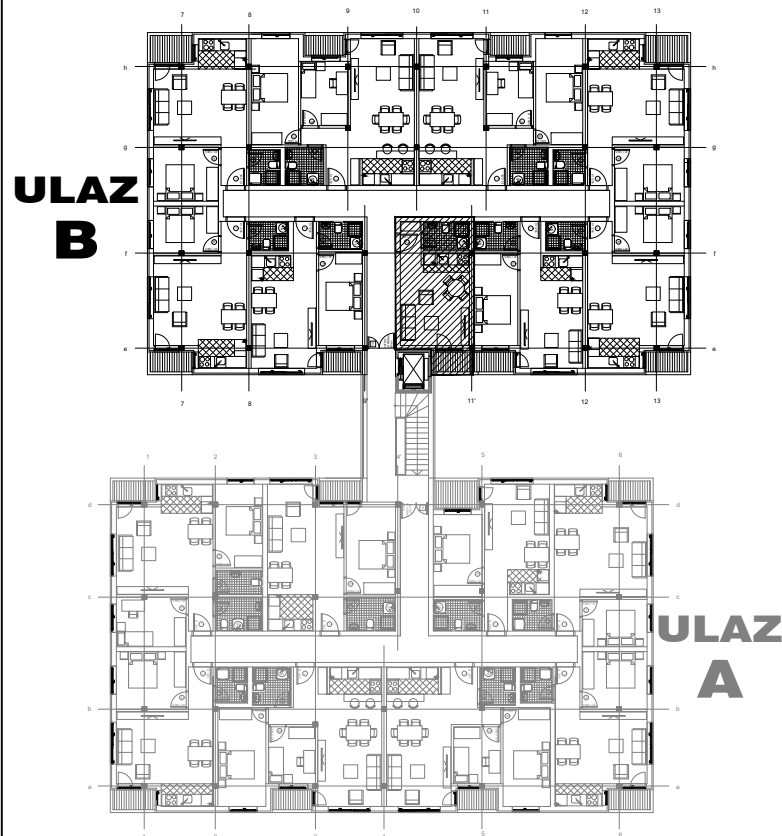
osnova stana
R = 1:100



STAN 11b GARSONJERA

1	ULAZNI HODNIK	2.96m ²
2	KUHINJA	2.55m ²
3	KUPATILO	3.76m ²
4	DNEVNA SOBA	14.17m ²
5	TERASA	1.99m ²
UKUPNO STAN 11b :		25.44m²
		- 3% (24.68m²)

OSNOVA I SPRATA



ulica Ćirila i Metodija br.50-52-54

ULAZ B: I SPRAT/STAN 11b