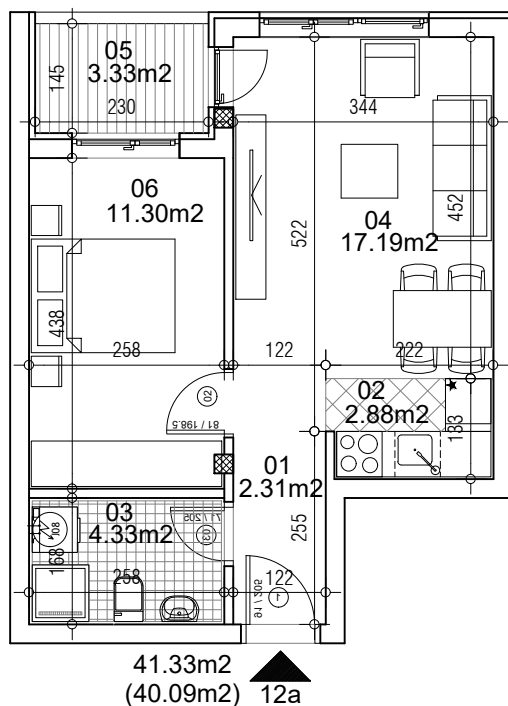


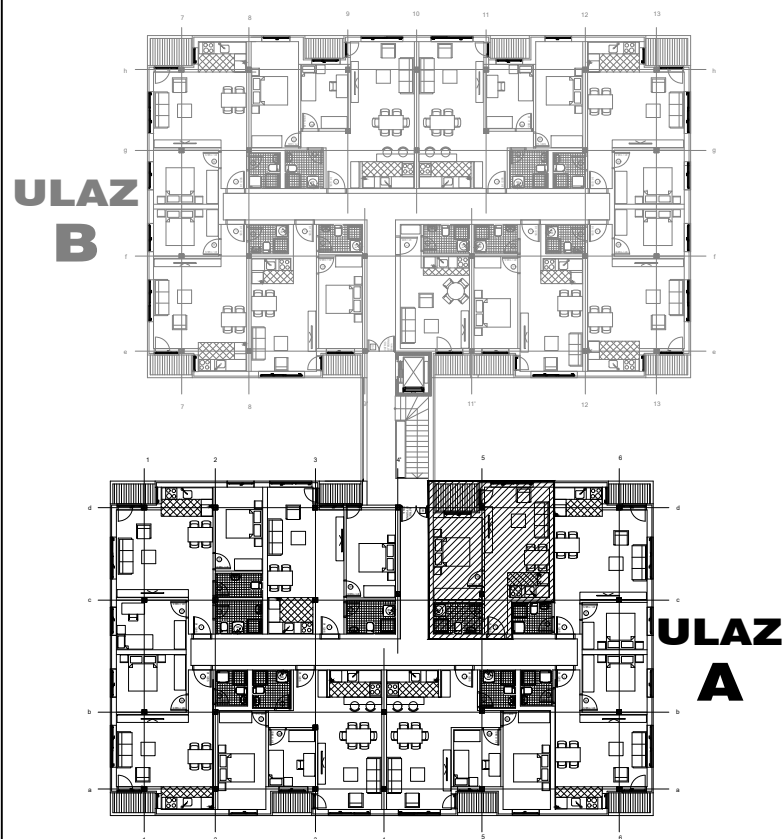
osnova stana
R = 1:100



STAN 12a DVOSOBAN

1	ULAZNI HODNIK	2.31m ²
2	KUHINJA	2.88m ²
3	KUPATILO	4.33m ²
4	DNEVNA SOBA	17.19m ²
5	TERASA	3.33m ²
6	SPAVAĆA SOBA	11.30m ²
UKUPNO STAN 12a :		41.33m ²
		- 3% (40.09m ²)

OSNOVA I SPRATA



ulica Ćirila i Metodija br.50-52-54

ULAZ A: I SPRAT/STAN 12a