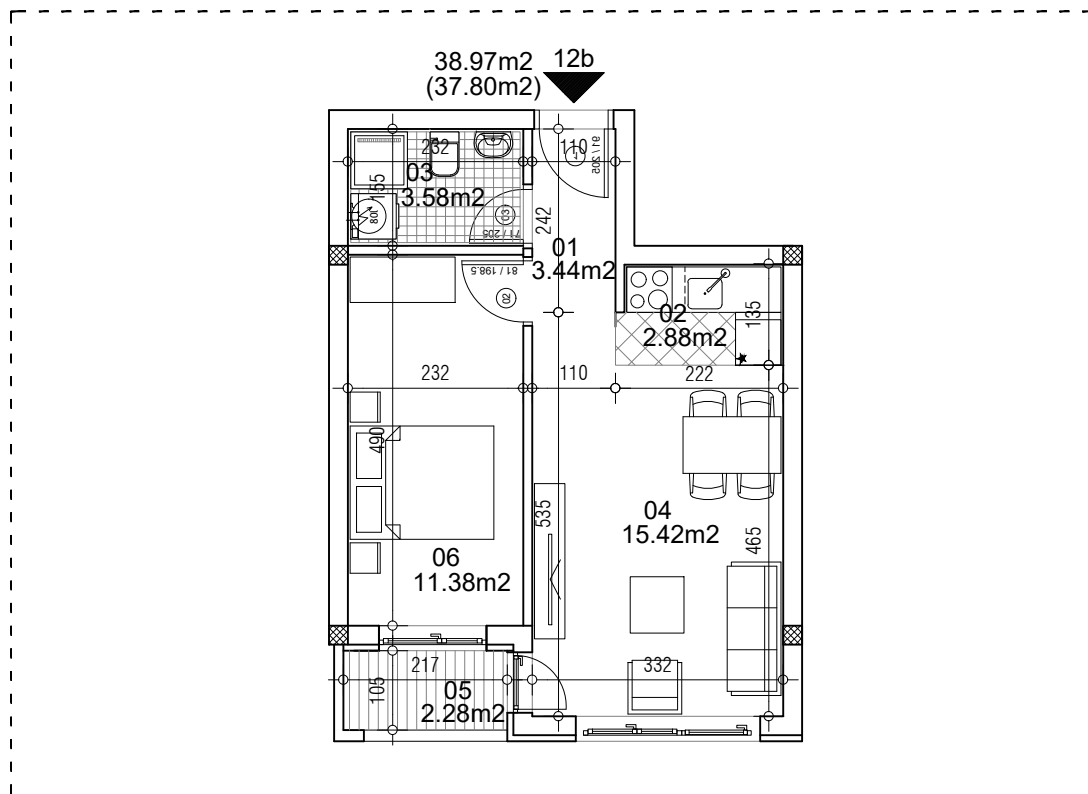


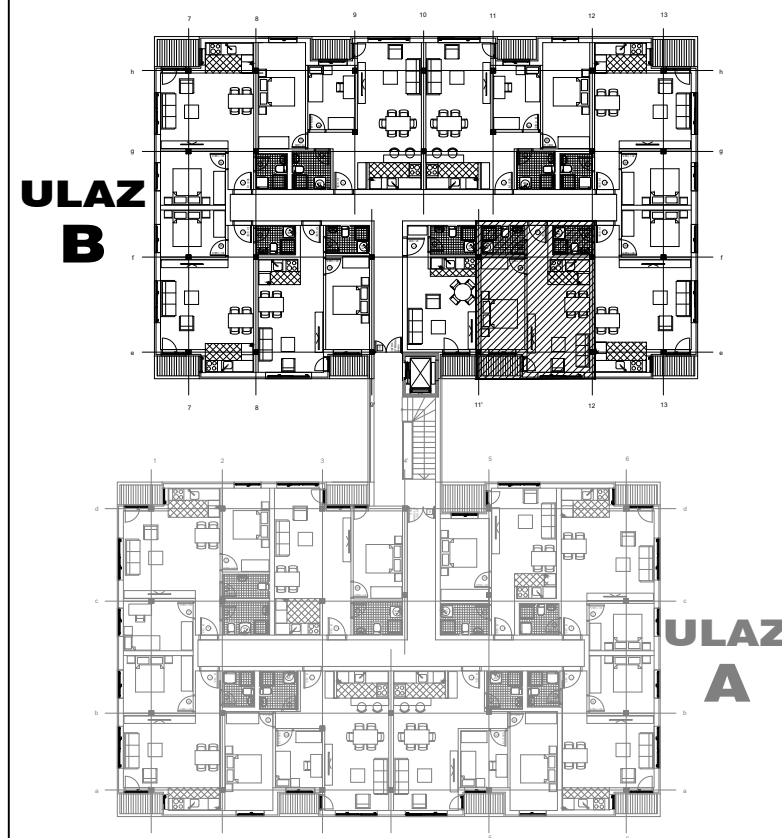
osnova stana
R = 1:100



STAN 12b DVOSOBAN

1	ULAZNI HODNIK	3.44m²
2	KUHINJA	2.88m²
3	KUPATILO	3.58m²
4	DNEVNA SOBA	15.42m²
5	TERASA	2.28m²
6	SPAVAĆA SOBA	11.38m²
UKUPNO STAN 12b :		38.97m²
		- 3% (37.80m²)

OSNOVA I SPRATA



ulica Ćirila i Metodija br.50-52-54

ULAZ B: I SPRAT/STAN 12b