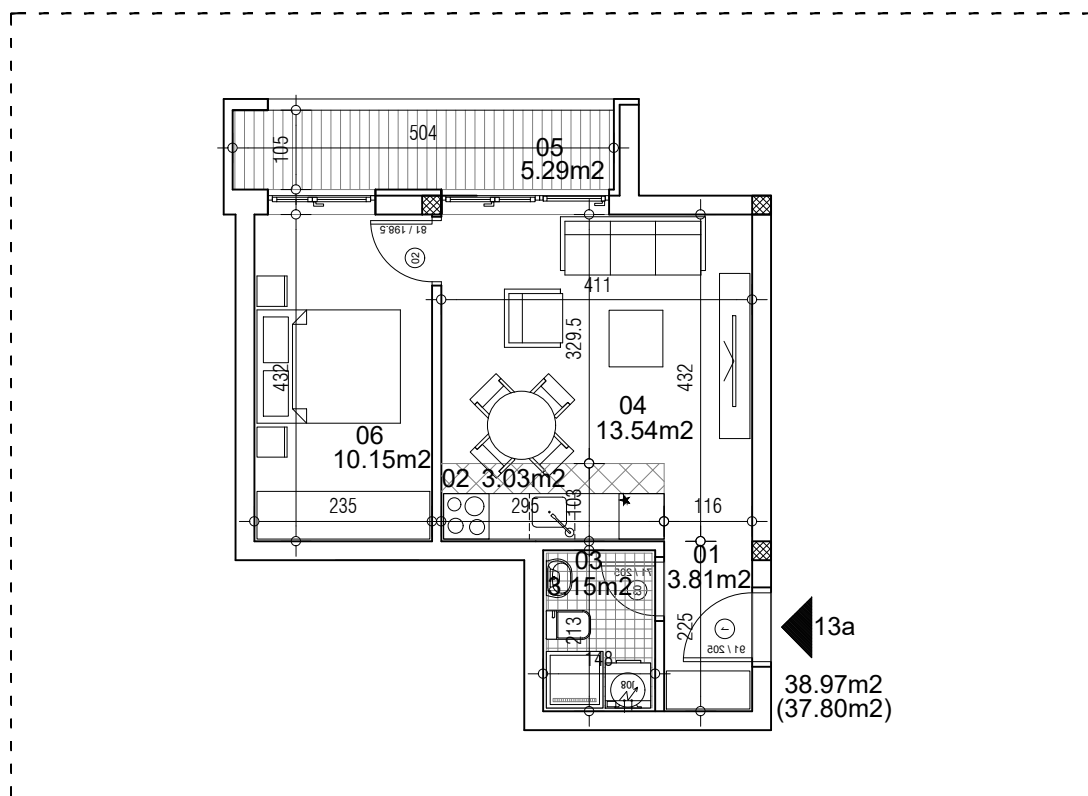


**osnova stana**  
**R = 1:100**

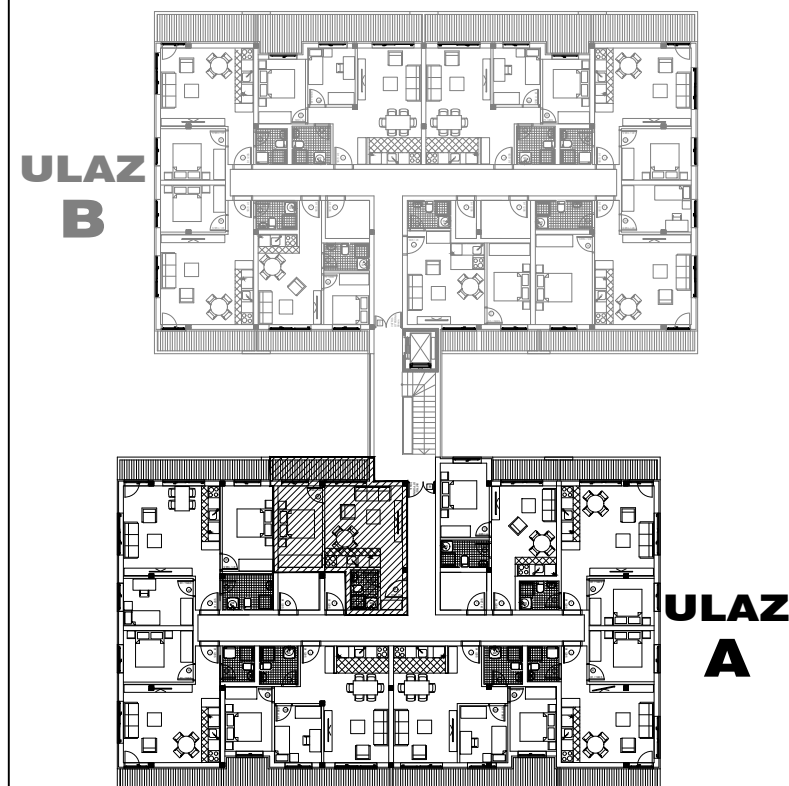


◀ 13a  
38.97m<sup>2</sup>  
(37.80m<sup>2</sup>)

**STAN 13a DVOSOBAN**

<b>1</b>	<b>ULAZNI HODNIK</b>	3.81m <sup>2</sup>
<b>2</b>	<b>KUHINJA</b>	3.03m <sup>2</sup>
<b>3</b>	<b>KUPATILO</b>	3.15m <sup>2</sup>
<b>4</b>	<b>DNEVNA SOBA</b>	13.54m <sup>2</sup>
<b>5</b>	<b>TERASA</b>	5.29m <sup>2</sup>
<b>6</b>	<b>SPAVAĆA SOBA</b>	10.15m <sup>2</sup>
<b>UKUPNO STAN 13a :</b>		38.97m <sup>2</sup>
		- 3% (37.80m <sup>2</sup> )

**OSNOVA POTKROVLJA**



**ulica Ćirila i Metodija br.50-52-54**

**ULAZ A: POTKROVLJE/STAN 13a**