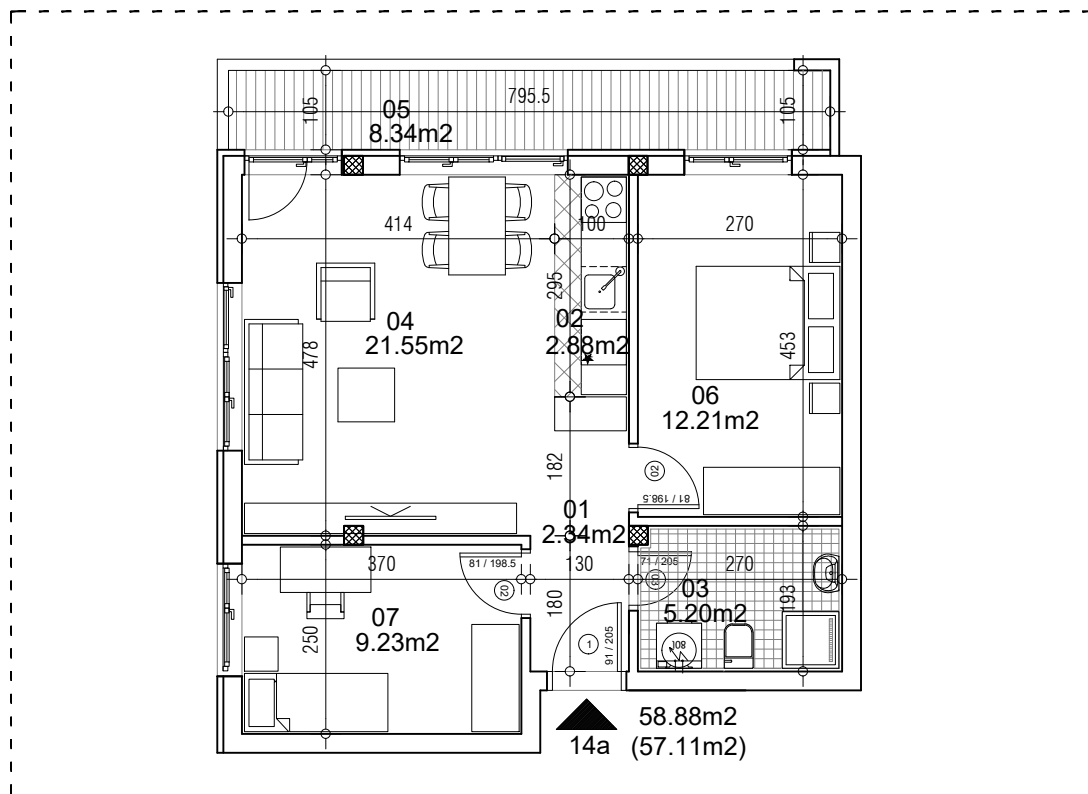


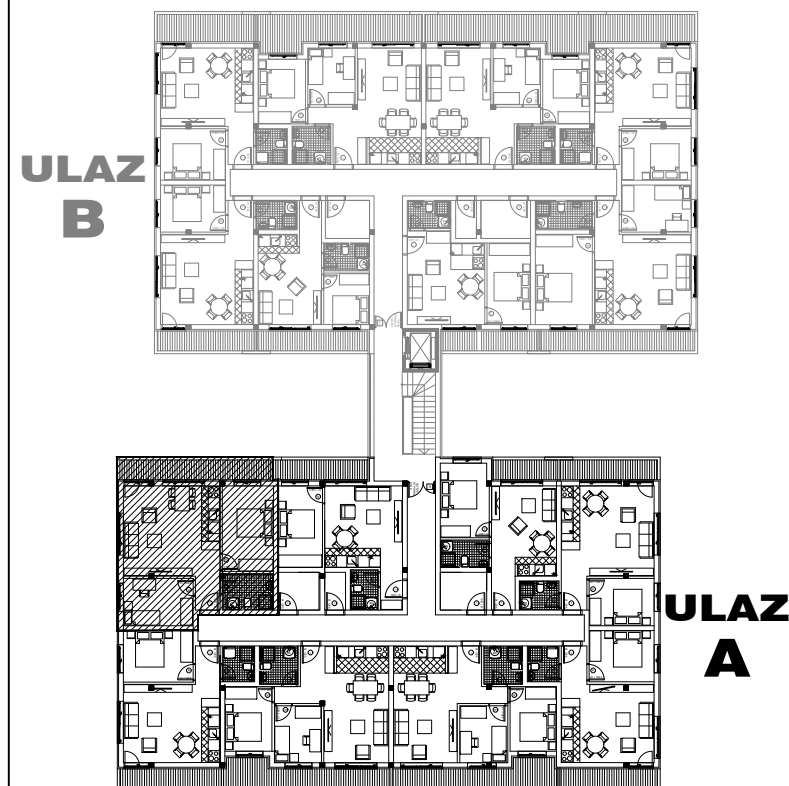
osnova stana
R = 1:100



STAN 14a TROSOBAN

1	ULAZNI HODNIK	2.34m ²
2	KUHINJA	2.88m ²
3	KUPATILO	5.20m ²
4	DNEVNA SOBA	21.55m ²
5	TERASA	8.34m ²
6	SPAVAĆA SOBA	12.21m ²
7	SPAVAĆA SOBA	9.23m ²
UKUPNO STAN 14a :		58.88m²
		- 3% (57.11m²)

OSNOVA POTKROVLJA



ulica Ćirila i Metodija br.50-52-54

ULAZ A: POTKROVLJE/STAN 14a