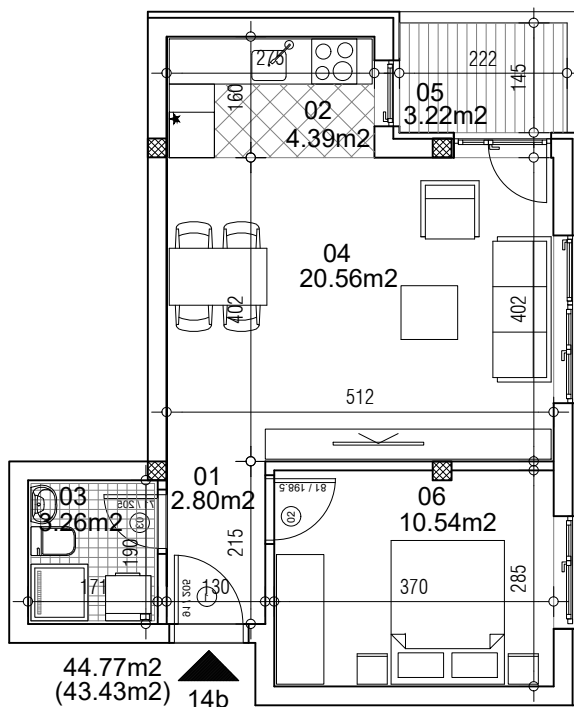


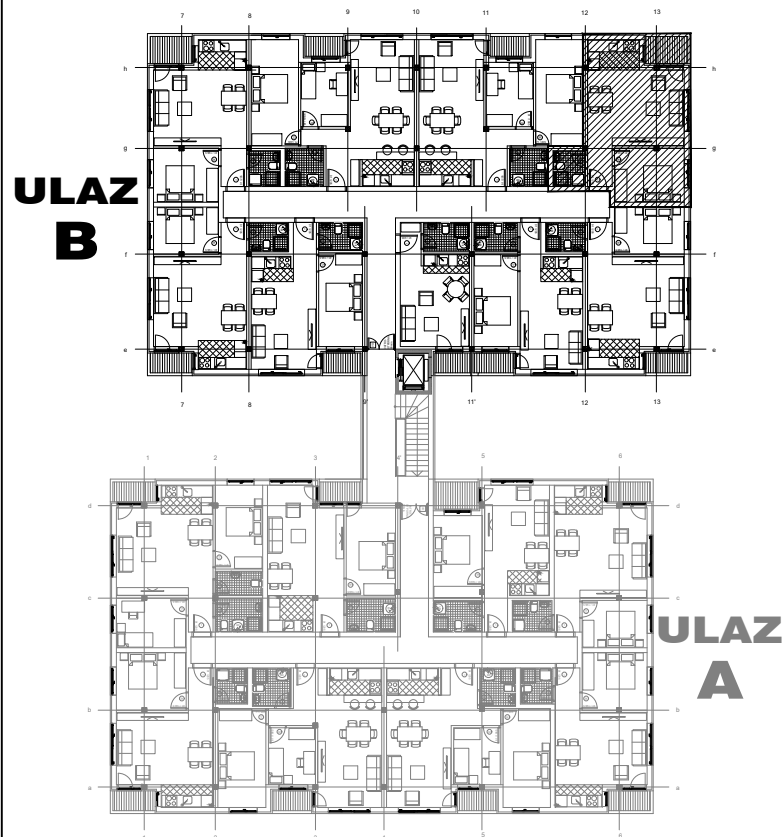
**osnova stana**  
**R = 1:100**



**STAN 14b DVOSOBAN**

<b>1</b>	<b>ULAZNI HODNIK</b>	2.80m <sup>2</sup>
<b>2</b>	<b>KUHINJA</b>	4.39m <sup>2</sup>
<b>3</b>	<b>KUPATILO</b>	3.26m <sup>2</sup>
<b>4</b>	<b>DNEVNA SOBA</b>	20.56m <sup>2</sup>
<b>5</b>	<b>TERASA</b>	3.22m <sup>2</sup>
<b>6</b>	<b>SPAVAĆA SOBA</b>	10.54m <sup>2</sup>
<b>UKUPNO STAN 14b :</b>		44.77m <sup>2</sup>
		- 3% (43.43m <sup>2</sup> )

**OSNOVA I SPRATA**



**ulica Ćirila i Metodija br.50-52-54**

**ULAZ B: I SPRAT/STAN 14b**