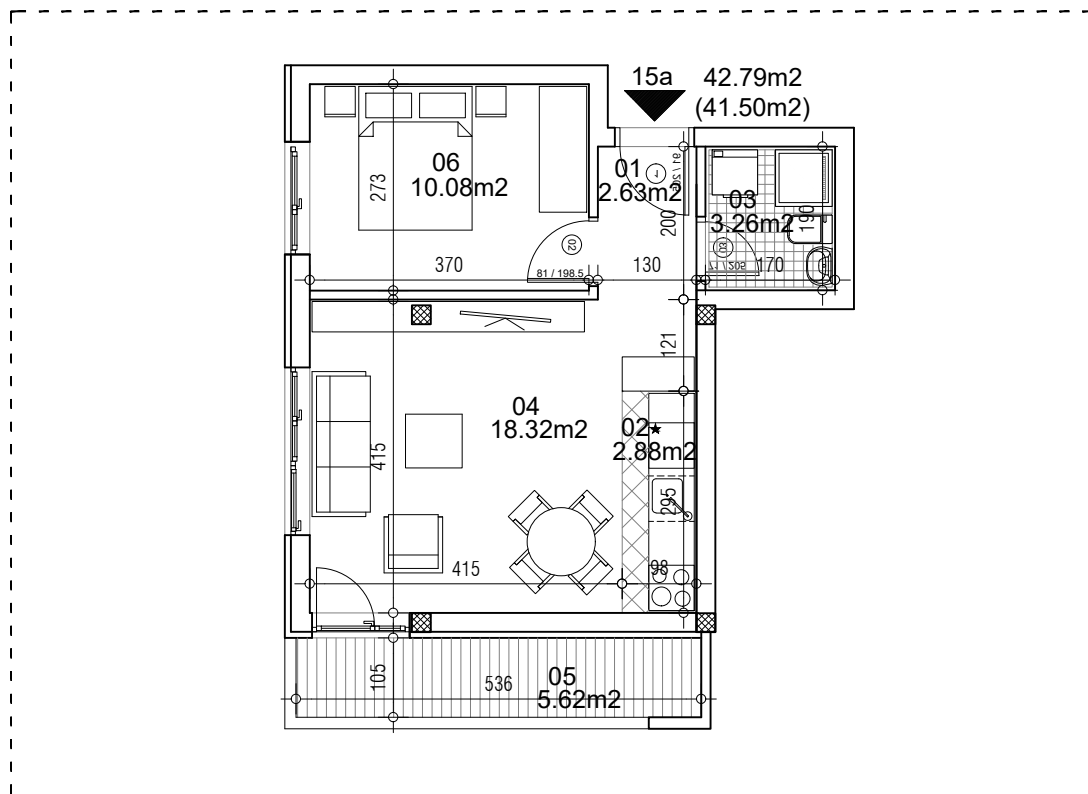


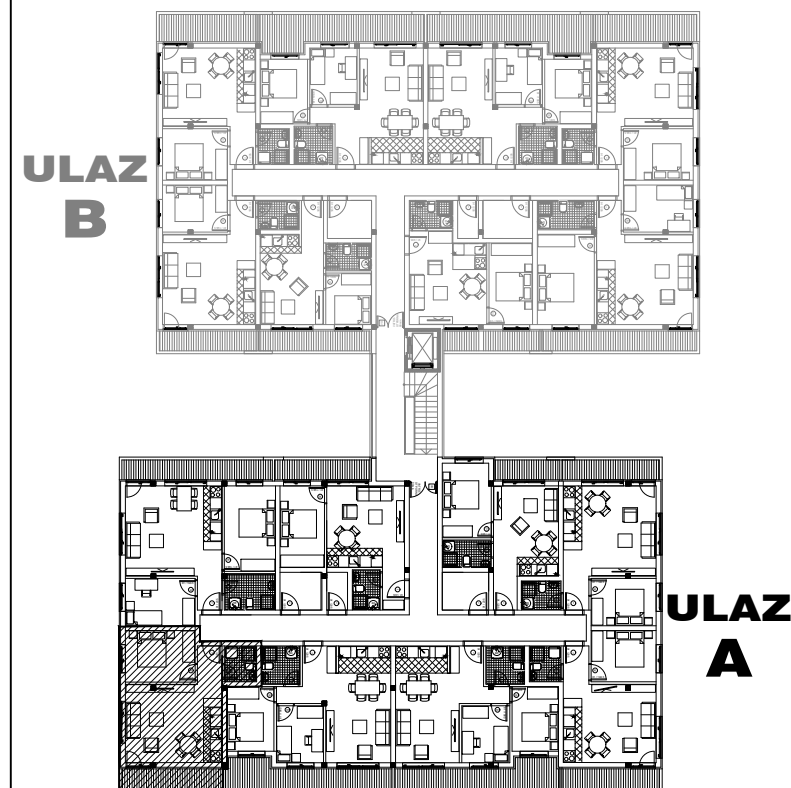
osnova stana
R = 1:100



STAN 15a DVOSOBAN

1	ULAZNI HODNIK	2.63m ²
2	KUHINJA	2.88m ²
3	KUPATILO	3.26m ²
4	DNEVNA SOBA	18.32m ²
5	TERASA	5.62m ²
6	SPAVAĆA SOBA	10.08m ²
UKUPNO STAN 15a :		42.79m ²
		- 3% (41.50m ²)

OSNOVA POTKROVLJA



ulica Ćirila i Metodija br.50-52-54

ULAZ A: POTKROVLJE/STAN 15a