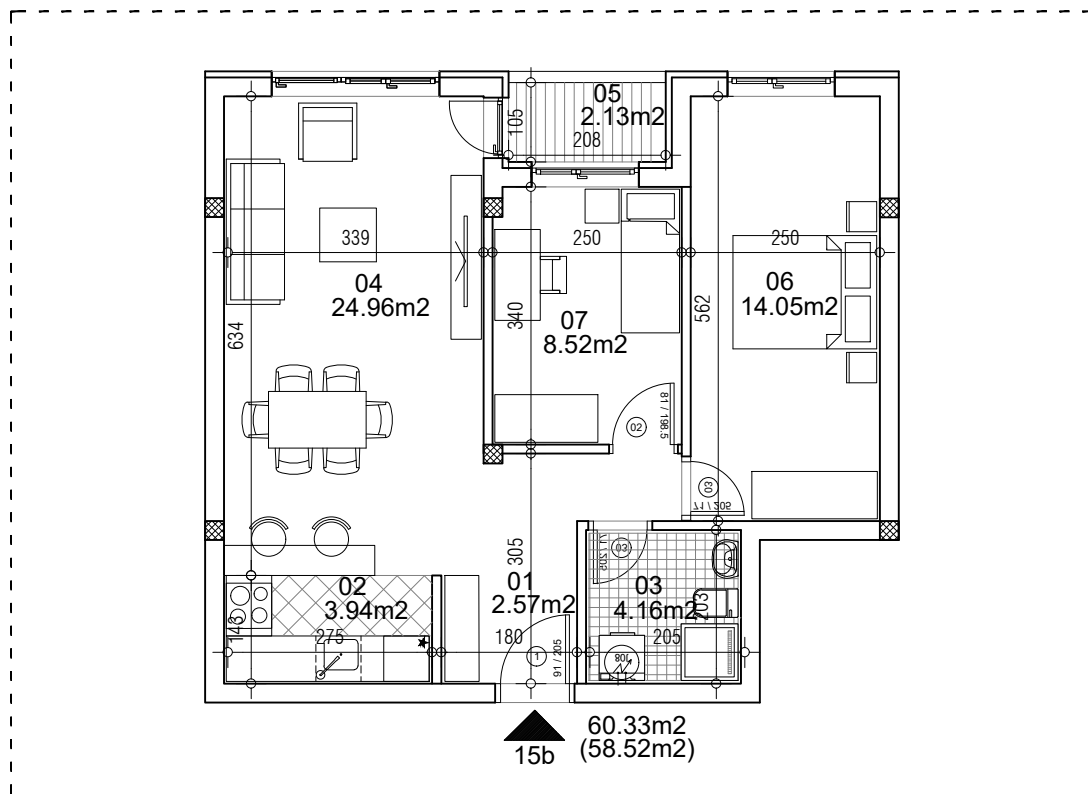


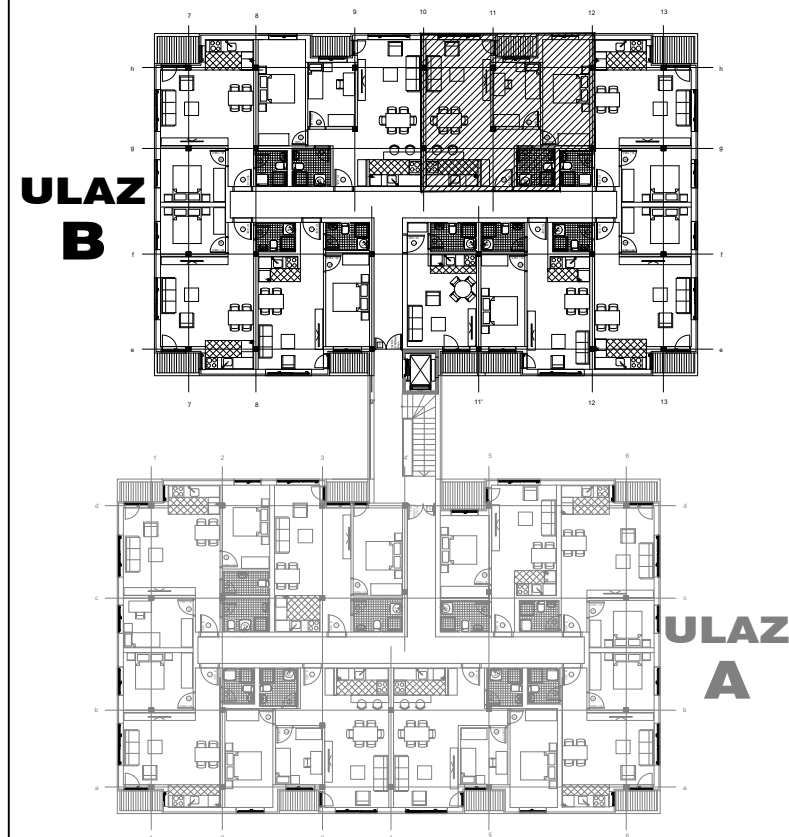
osnova stana
R = 1:100



STAN 15b TROSOBAN

1	ULAZNI HODNIK	2.57m ²
2	KUHINJA	3.94m ²
3	KUPATILO	4.16m ²
4	DNEVNA SOBA	24.96m ²
5	TERASA	2.13m ²
6	SPAVAĆA SOBA	14.05m ²
7	SPAVAĆA SOBA	60.33m ²
UKUPNO STAN 15b :		8.52m ²
		- 3% (58.52m²)

OSNOVA I SPRATA



ulica Ćirila i Metodija br.50-52-54

ULAZ B: I SPRAT/STAN 15b