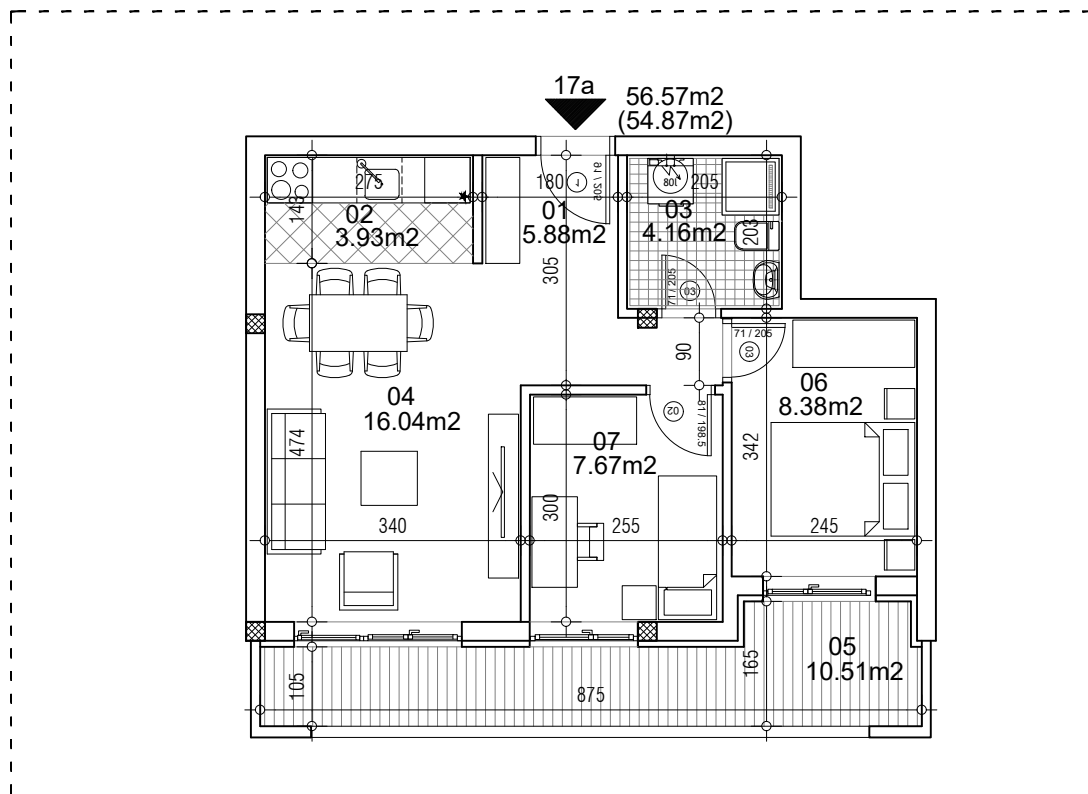


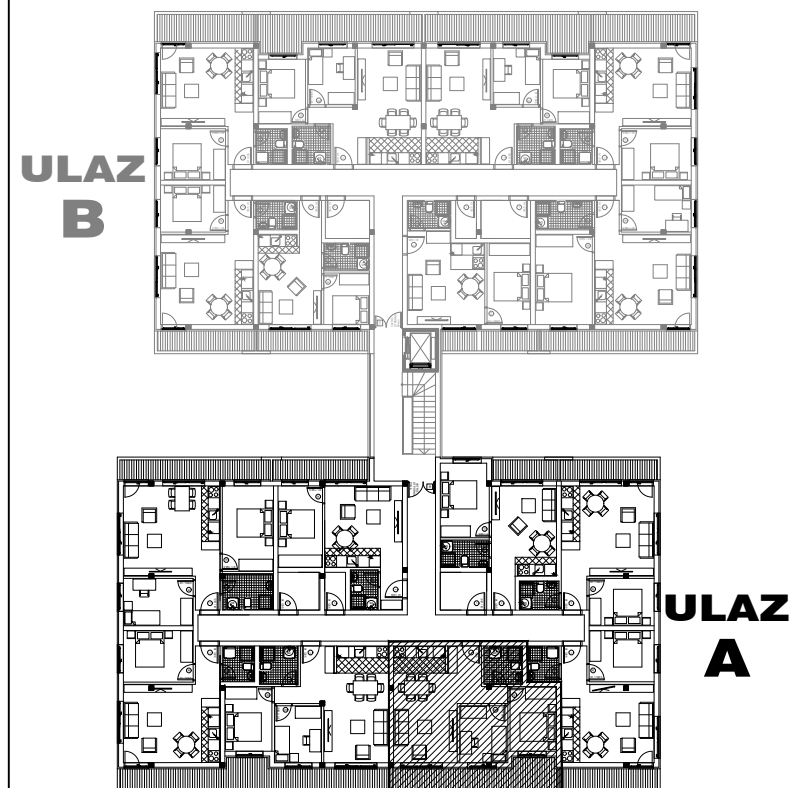
osnova stana
R = 1:100



STAN 17a TROSOBAN

1	ULAZNI HODNIK	5.88m ²
2	KUHINJA	3.93m ²
3	KUPATILO	4.16m ²
4	DNEVNA SOBA	16.04m ²
5	TERASA	10.51m ²
6	SPAVAĆA SOBA	8.38m ²
7	SPAVAĆA SOBA	7.67m ²
UKUPNO STAN 17a :		56.57m²
		- 3% (54.87m²)

OSNOVA POTKROVLJA



ulica Ćirila i Metodija br.50-52-54

ULAZ A: POTKROVLJE/STAN 17a