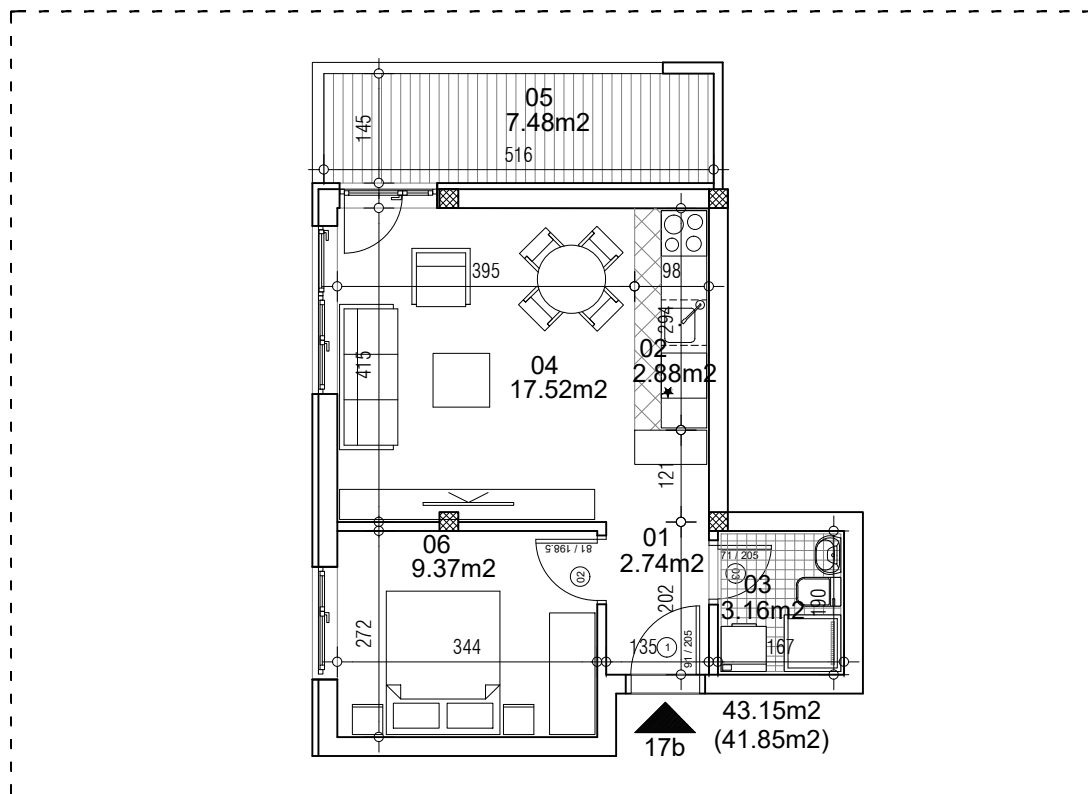


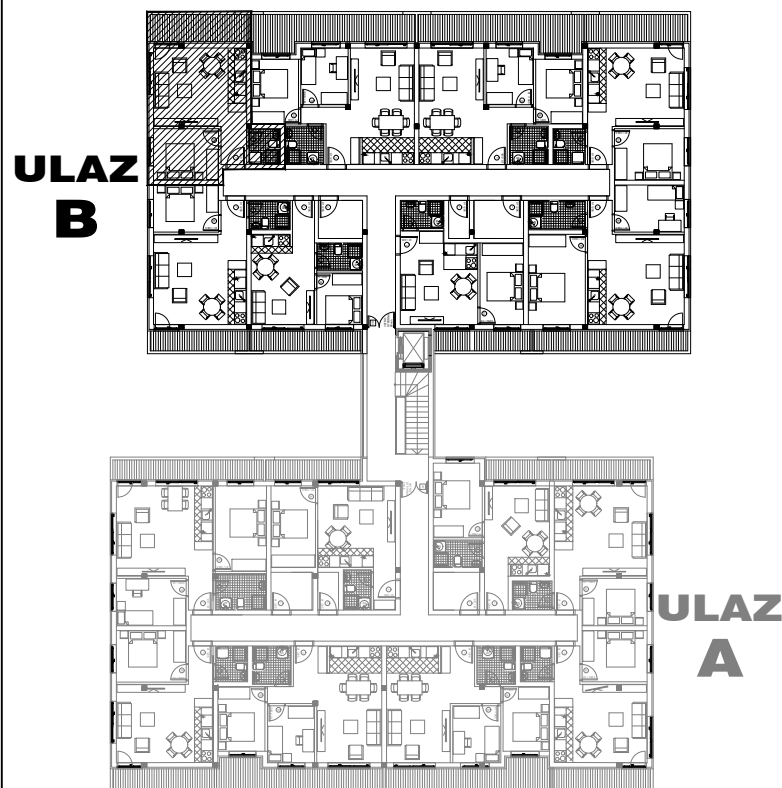
osnova stana
R = 1:100



STAN 17b DVOSOBAN

1	ULAZNI HODNIK	2.74m ²
2	KUHINJA	2.88m ²
3	KUPATILO	3.16m ²
4	DNEVNA SOBA	17.52m ²
5	TERASA	7.48m ²
6	SPAVAĆA SOBA	9.37m ²
UKUPNO STAN 17b :		43.15m ²
		- 3% (41.85m ²)

OSNOVA POTKROVLJA



ulica Ćirila i Metodija br.50-52-54

ULAZ A: POTKROVLJE/STAN 17b