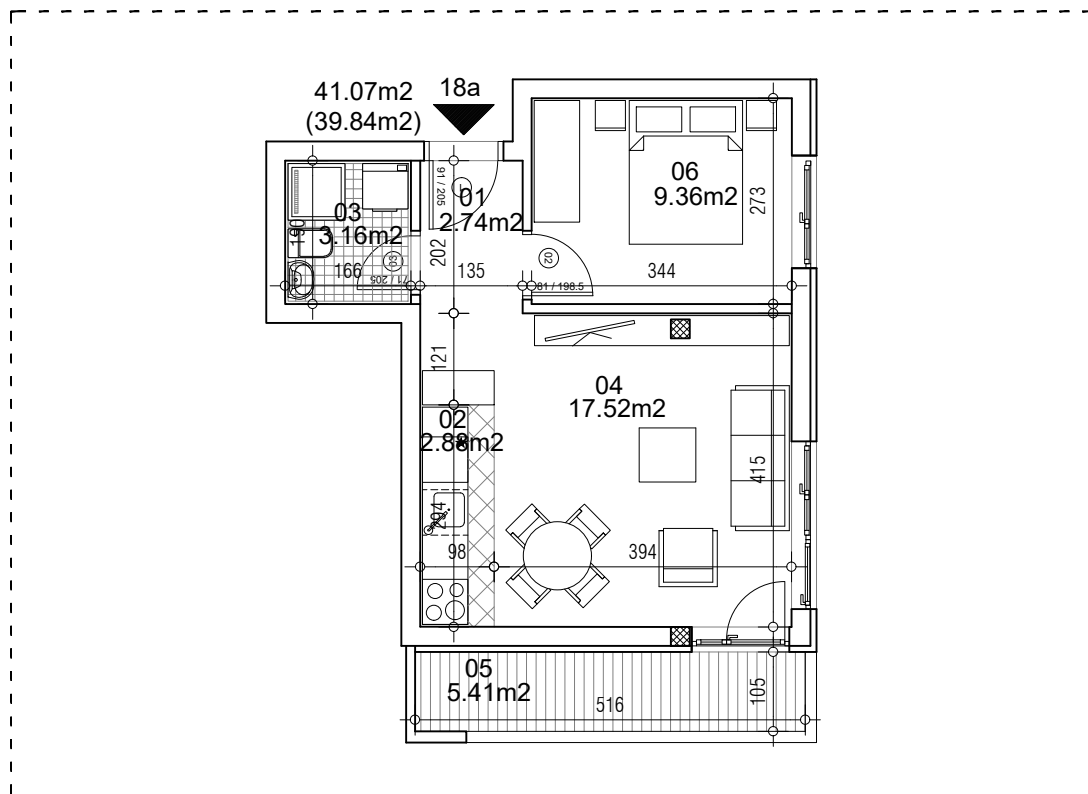


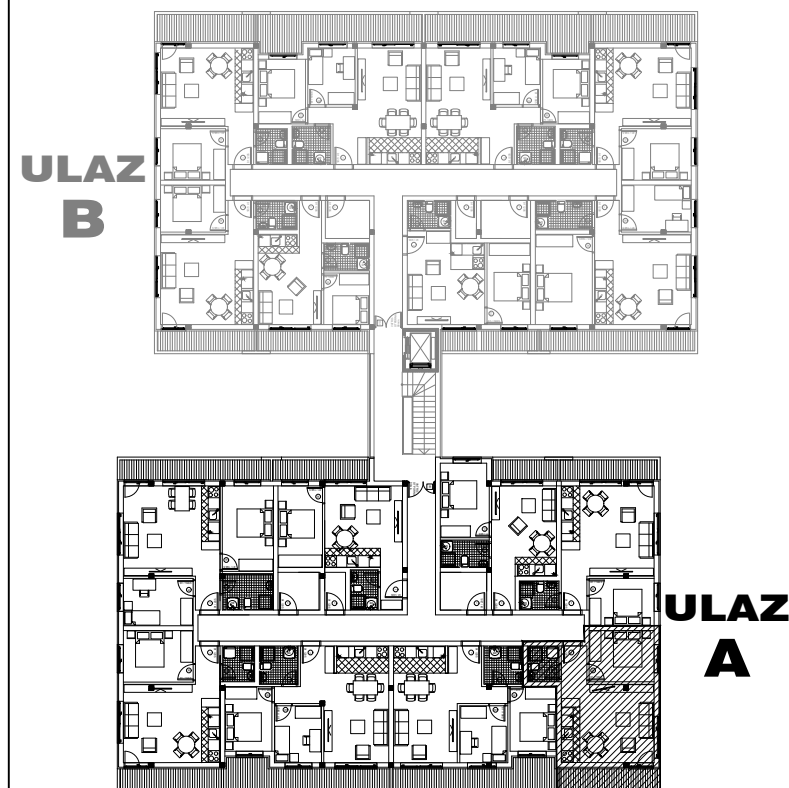
osnova stana
R = 1:100



STAN 18a DVOSOBAN

| | | |
|--------------------------|----------------------|----------------------------------|
| 1 | ULAZNI HODNIK | 2.74m² |
| 2 | KUHINJA | 2.88m² |
| 3 | KUPATILO | 3.16m² |
| 4 | DNEVNA SOBA | 17.52m² |
| 5 | TERASA | 5.41m² |
| 6 | SPAVAĆA SOBA | 9.36m² |
| UKUPNO STAN 18a : | | 41.07m² |
| | | - 3% (39.84m²) |

OSNOVA POTKROVLJA



ulica Ćirila i Metodija br.50-52-54

ULAZ A: POTKROVLJE/STAN 18a