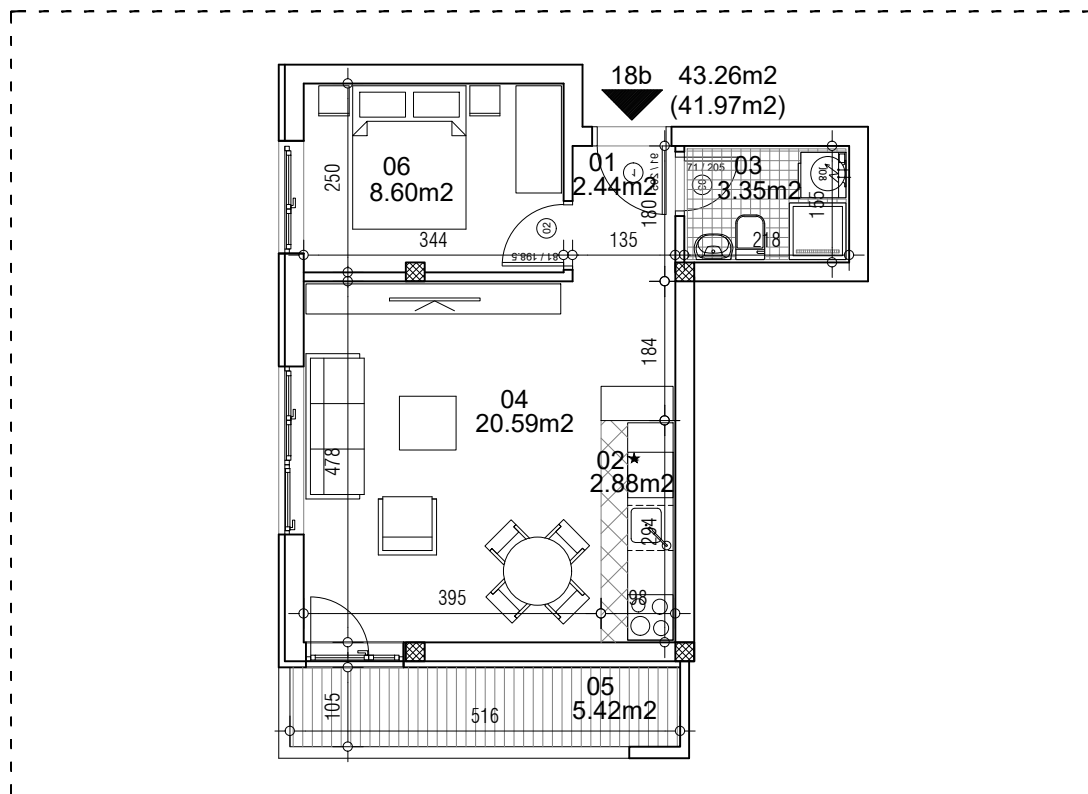


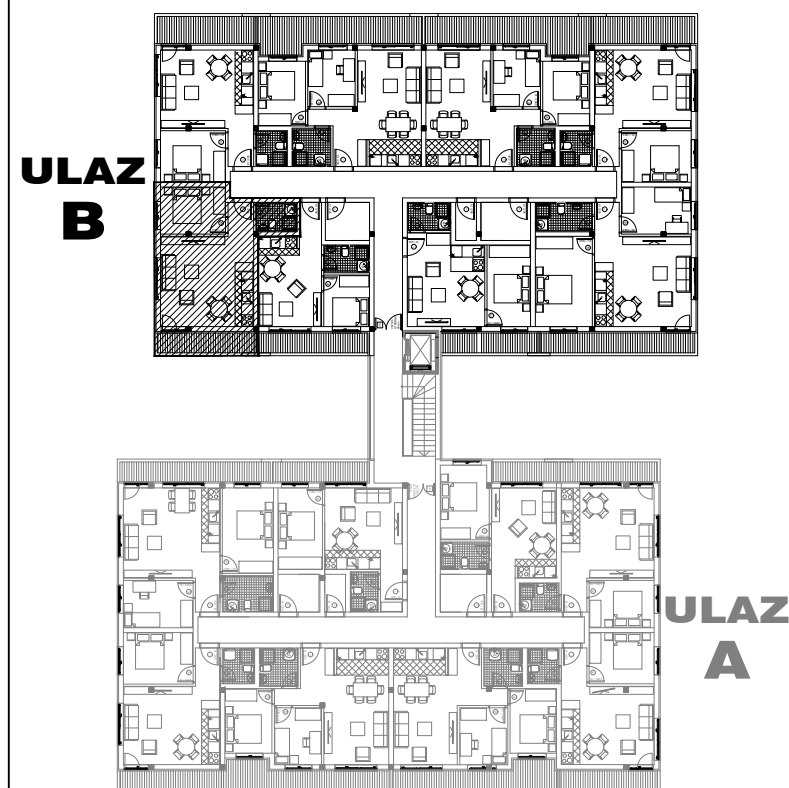
osnova stana
R = 1:100



STAN 18b DVOSOBAN

1	ULAZNI HODNIK	2.44m ²
2	KUHINJA	2.88m ²
3	KUPATILO	3.35m ²
4	DNEVNA SOBA	20.59m ²
5	TERASA	5.42m ²
6	SPAVAĆA SOBA	8.60m ²
UKUPNO STAN 18b :		43.26m ²
		- 3% (41.97m ²)

OSNOVA POTKROVLJA



ulica Ćirila i Metodija br.50-52-54

ULAZ A: POTKROVLJE/STAN 18b