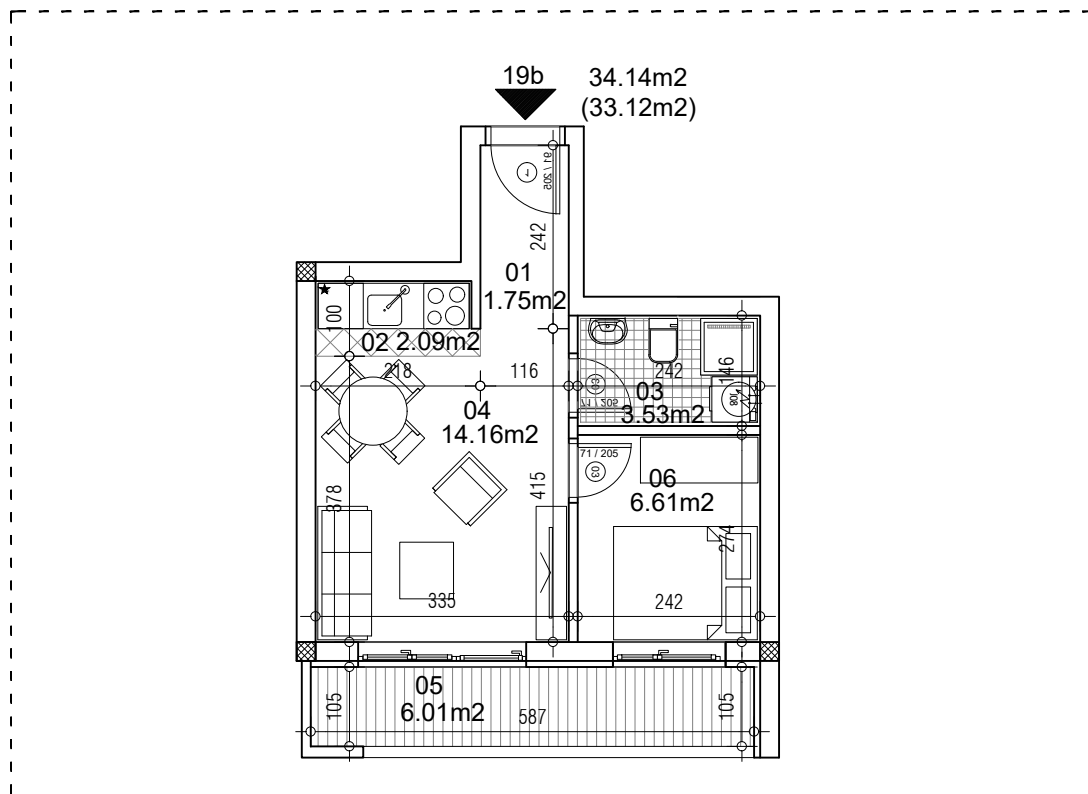


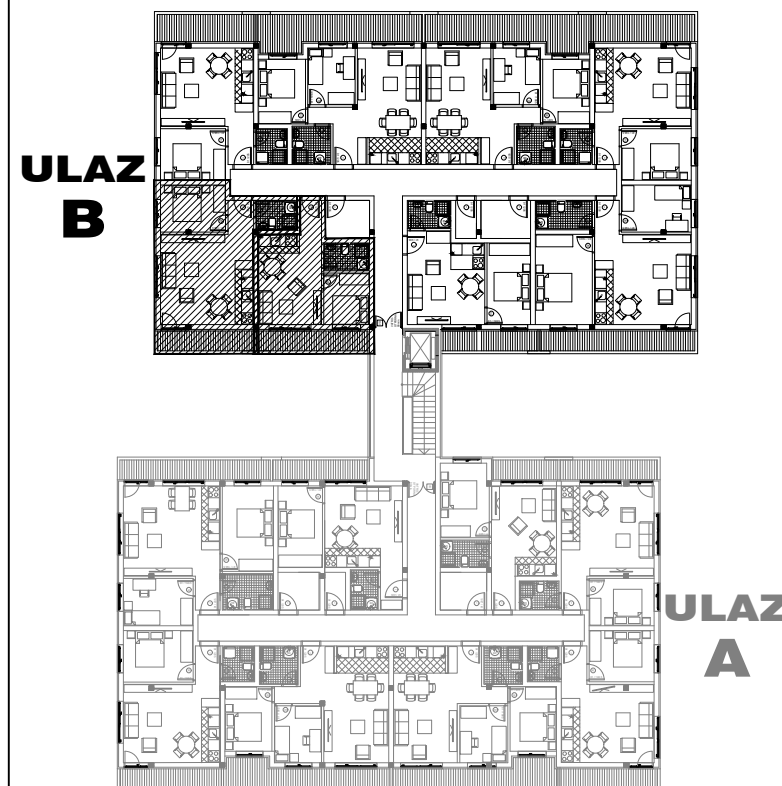
osnova stana
R = 1:100



STAN 19b DVOSOBAN

| | | |
|--------------------------|----------------------|-----------------------------|
| 1 | ULAZNI HODNIK | 1.75m ² |
| 2 | KUHINJA | 2.09m ² |
| 3 | KUPATILO | 3.53m ² |
| 4 | DNEVNA SOBA | 14.16m ² |
| 5 | TERASA | 6.01m ² |
| 6 | SPAVAĆA SOBA | 6.61m ² |
| UKUPNO STAN 19b : | | 34.14m ² |
| | | - 3% (33.12m ²) |

OSNOVA POTKROVLJA



ulica Ćirila i Metodija br.50-52-54

ULAZ A: POTKROVLJE/STAN 19b