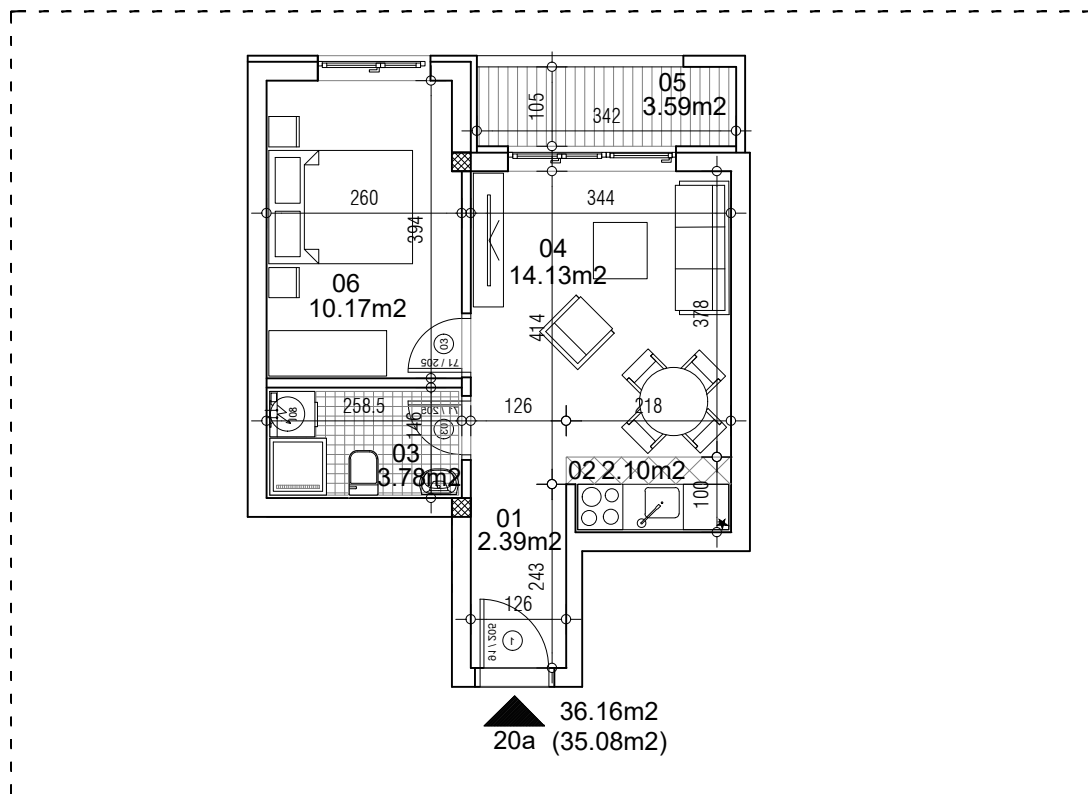


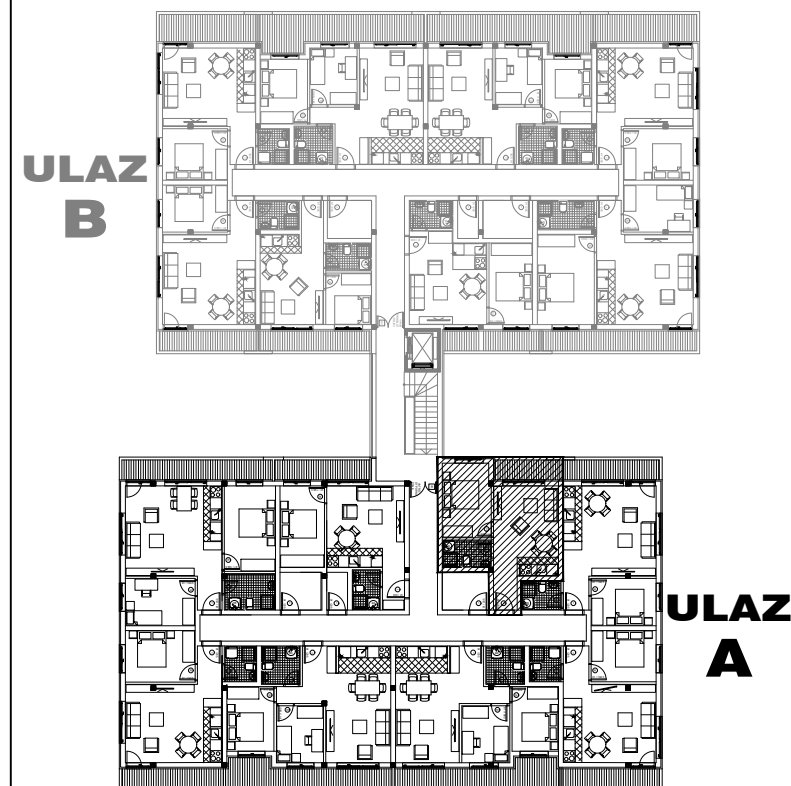
**osnova stana**  
**R = 1:100**



**STAN 20a DVOSOBAN**

<b>1</b>	<b>ULAZNI HODNIK</b>	2.39m <sup>2</sup>
<b>2</b>	<b>KUHINJA</b>	2.10m <sup>2</sup>
<b>3</b>	<b>KUPATILO</b>	3.78m <sup>2</sup>
<b>4</b>	<b>DNEVNA SOBA</b>	14.13m <sup>2</sup>
<b>5</b>	<b>TERASA</b>	3.59m <sup>2</sup>
<b>6</b>	<b>SPAVAĆA SOBA</b>	10.17m <sup>2</sup>
<b>UKUPNO STAN 20a :</b>		36.16m <sup>2</sup>
		<b>- 3% (35.08m<sup>2</sup>)</b>

**OSNOVA POTKROVLJA**



**ulica Ćirila i Metodija br.50-52-54**

**ULAZ A: POTKROVLJE/STAN 20a**