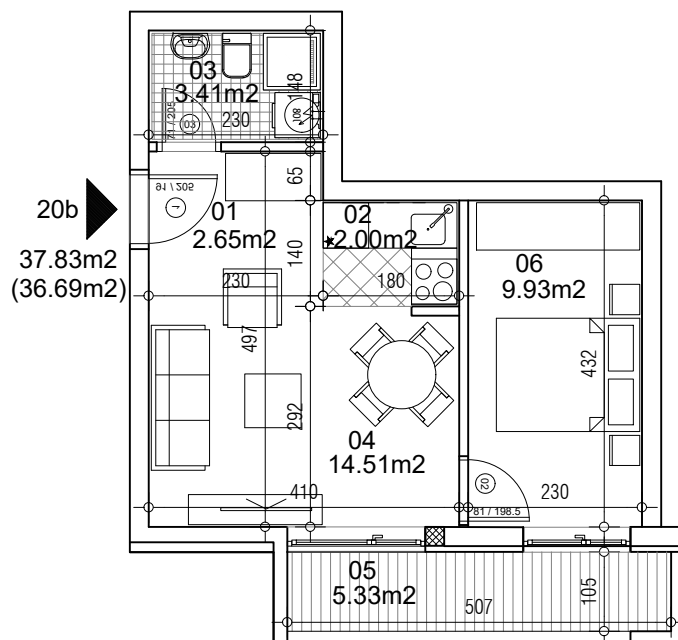


**osnova stana**  
**R = 1:100**

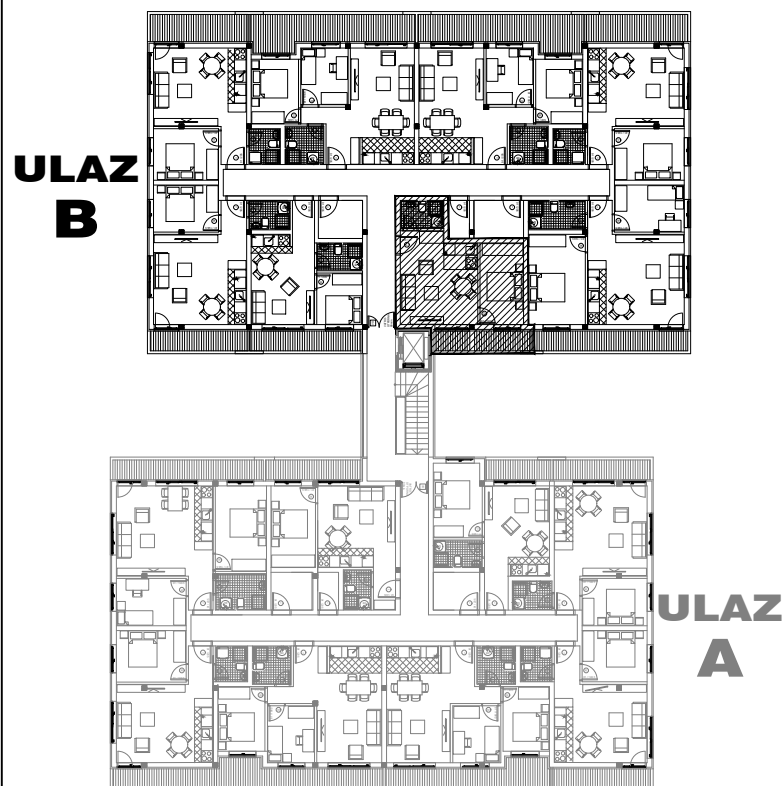


20b  
37.83m<sup>2</sup>  
(36.69m<sup>2</sup>)

**STAN 20b DVOSOBAN**

<b>1</b>	<b>ULAZNI HODNIK</b>	2.65m <sup>2</sup>
<b>2</b>	<b>KUHINJA</b>	2.00m <sup>2</sup>
<b>3</b>	<b>KUPATILO</b>	3.41m <sup>2</sup>
<b>4</b>	<b>DNEVNA SOBA</b>	14.51m <sup>2</sup>
<b>5</b>	<b>TERASA</b>	5.33m <sup>2</sup>
<b>6</b>	<b>SPAVAĆA SOBA</b>	9.93m <sup>2</sup>
<b>UKUPNO STAN 20b :</b>		37.83m <sup>2</sup>
		<b>- 3% (36.69m<sup>2</sup>)</b>

**OSNOVA POTKROVLJA**



**ulica Ćirila i Metodija br.50-52-54**

**ULAZ A: POTKROVLJE/STAN 20b**