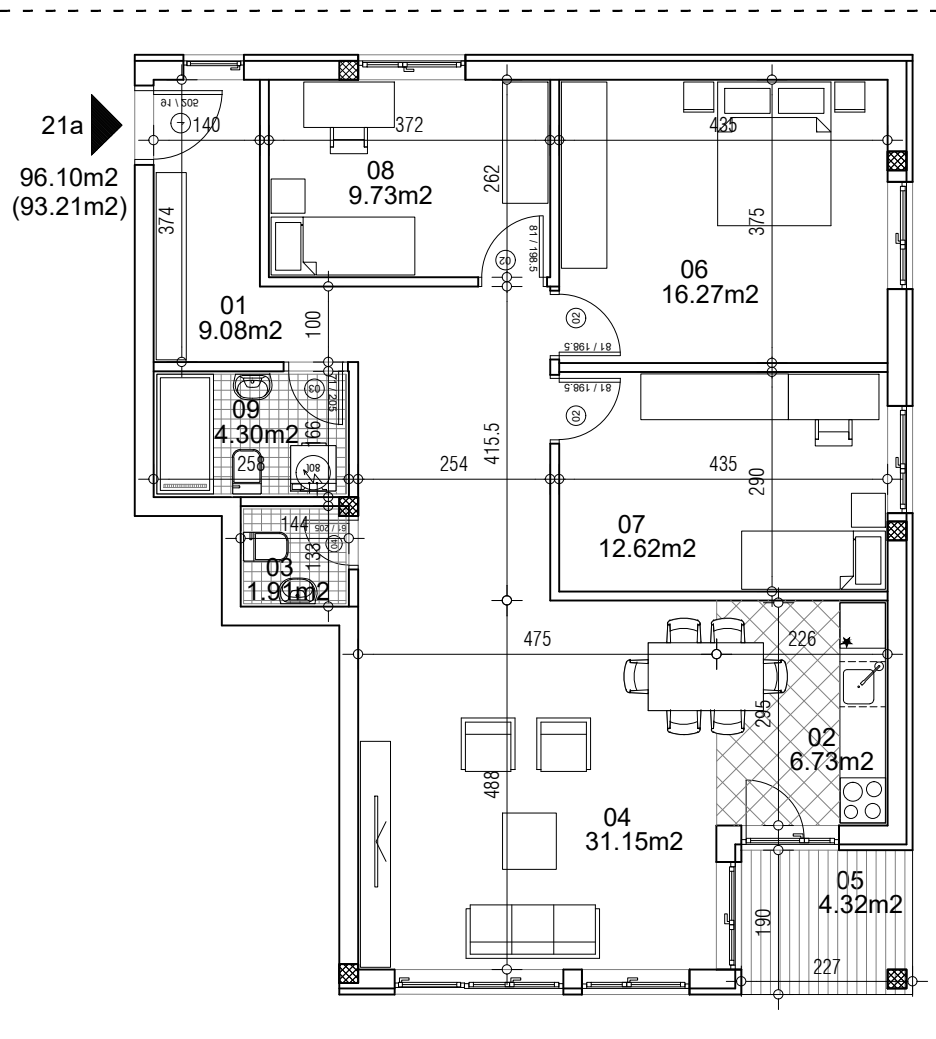


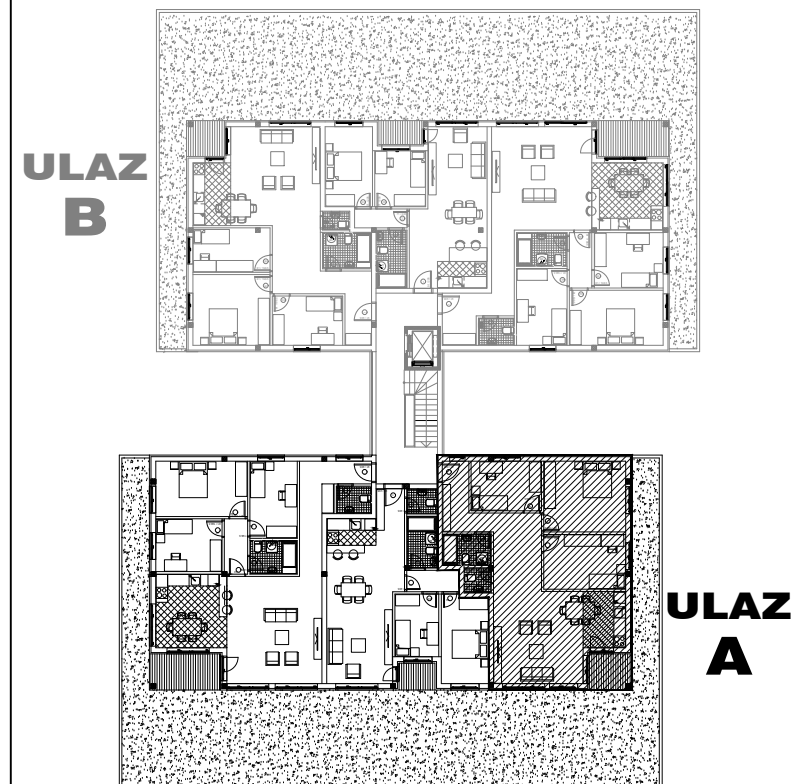
osnova stana
R = 1:100



STAN 21a ČETVOROSOBAN

1	ULAZNI HODNIK	9.08m ²
2	KUHINJA	6.73m ²
3	TOALET	1.91m ²
4	DNEVNA SOBA	31.15m ²
5	TERASA	4.32m ²
6	SPAVAĆA SOBA	16.27m ²
7	SPAVAĆA SOBA	12.62m ²
8	SPAVAĆA SOBA	9.73m ²
9	KUPATILO	4.30m ²
UKUPNO STAN 21a :		96.10m ²
		- 3% (93.21m²)

OSNOVA DUPEKSA



ulica Ćirila i Metodija br.50-52-54

ULAZ A: DUPEKKS/STAN 21a