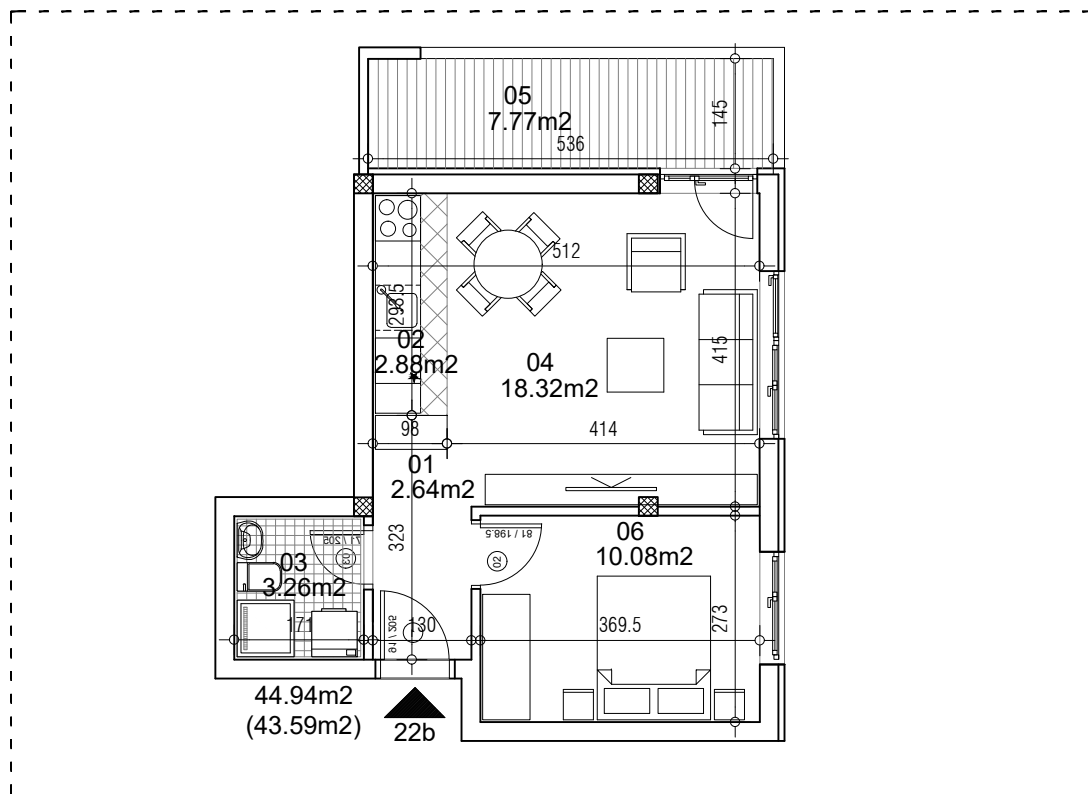


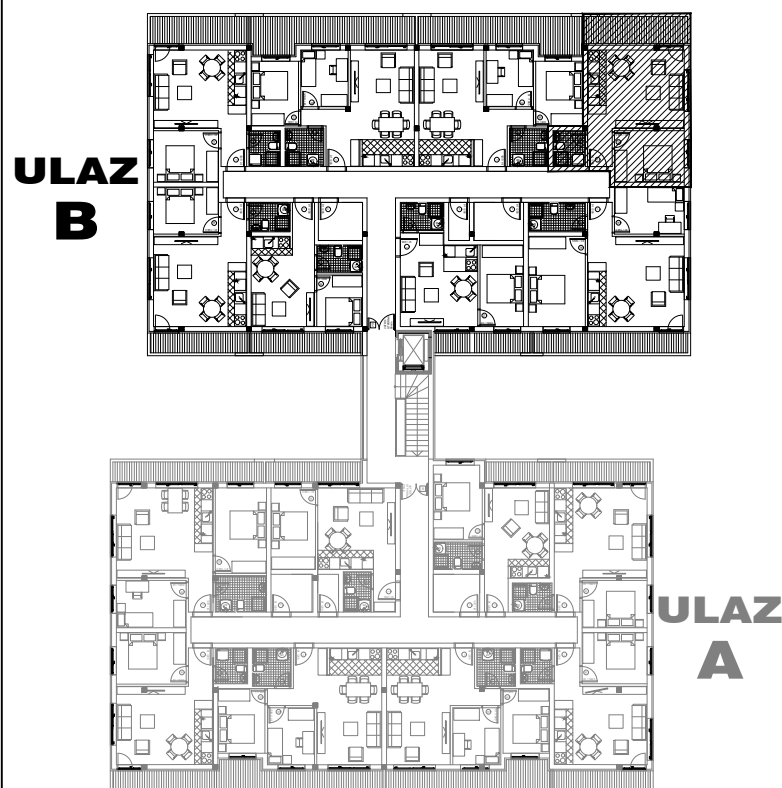
**osnova stana**  
**R = 1:100**



**STAN 22b DVOSOBAN**

<b>1</b>	<b>ULAZNI HODNIK</b>	2.64m <sup>2</sup>
<b>2</b>	<b>KUHINJA</b>	2.88m <sup>2</sup>
<b>3</b>	<b>KUPATILO</b>	3.26m <sup>2</sup>
<b>4</b>	<b>DNEVNA SOBA</b>	18.32m <sup>2</sup>
<b>5</b>	<b>TERASA</b>	7.77m <sup>2</sup>
<b>6</b>	<b>SPAVAĆA SOBA</b>	10.08m <sup>2</sup>
<b>UKUPNO STAN 22b :</b>		44.94m <sup>2</sup>
		- 3% (43.59m <sup>2</sup> )

**OSNOVA POTKROVLJA**



**ulica Ćirila i Metodija br.50-52-54**

**ULAZ A: POTKROVLJE/STAN 22b**