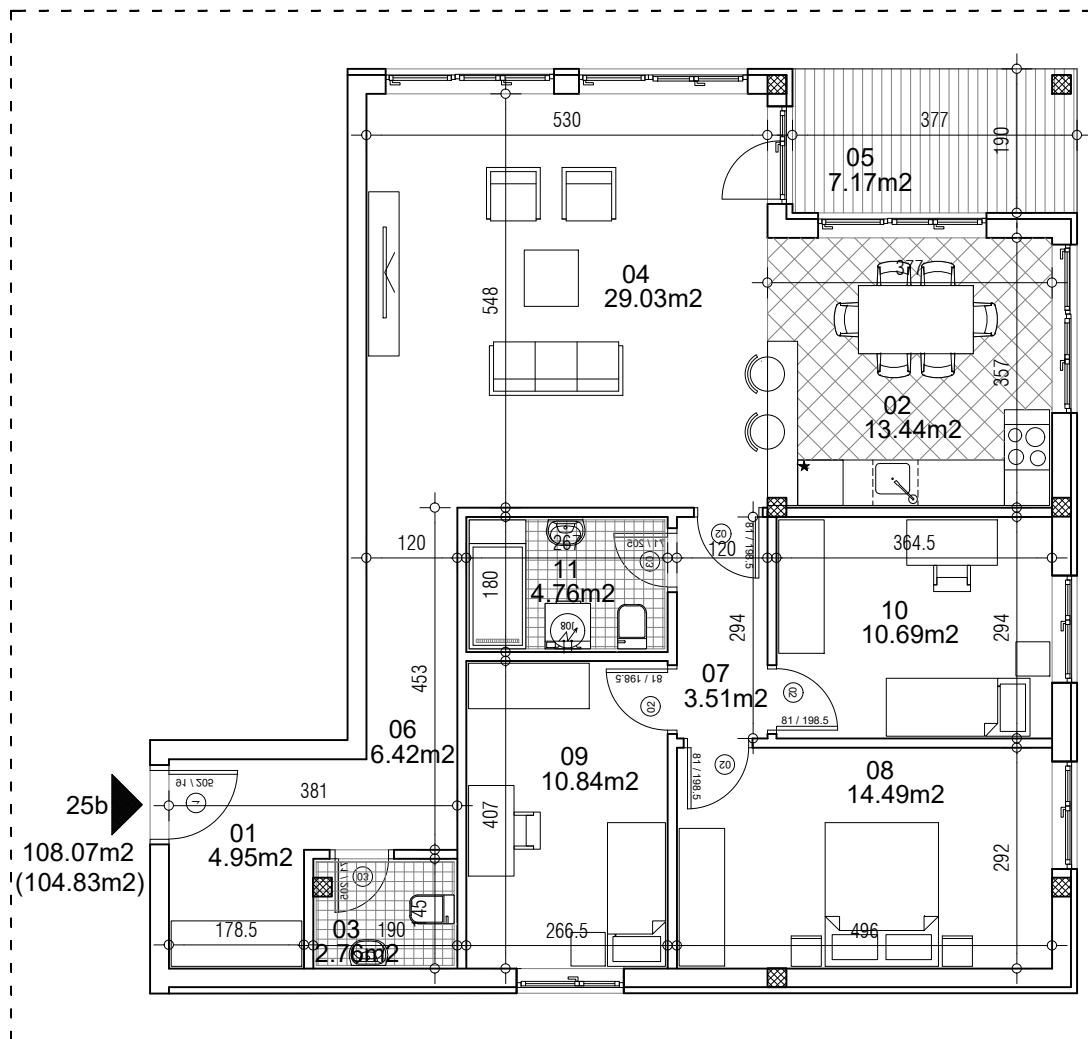


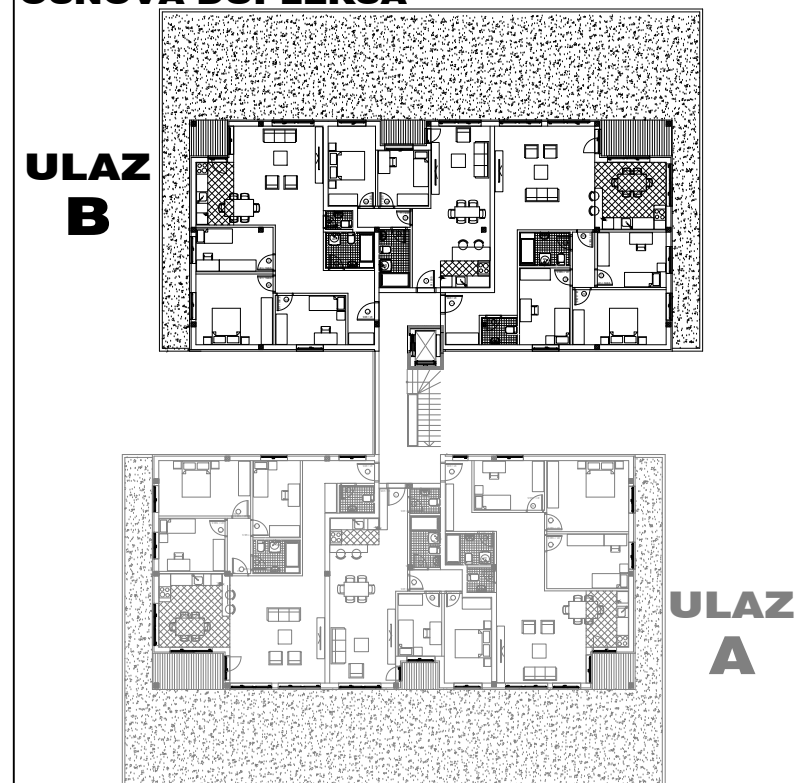
osnova stana
R = 1:100



STAN 26b ČETVOROSOBAN

1	ULAZNI HODNIK	4.95m ²
2	KUHINJA	13.44m ²
3	TOALET	2.76m ²
4	DNEVNA SOBA	29.03m ²
5	TERASA	7.17m ²
6	HODNIK	6.42m ²
7	DEGAŽMAN	3.51m ²
8	SPAVAĆA SOBA	14.49m ²
9	SPAVAĆA SOBA	10.84m ²
10	SPAVAĆA SOBA	10.69m ²
11	KUPATILO	4.76m ²
UKUPNO STAN 26b :		108.07m²
		- 3% (104.83m²)

OSNOVA DUPEKSA



ulica Ćirila i Metodija br.50-52-54

ULAZ A: DUPEKKS/STAN 26b