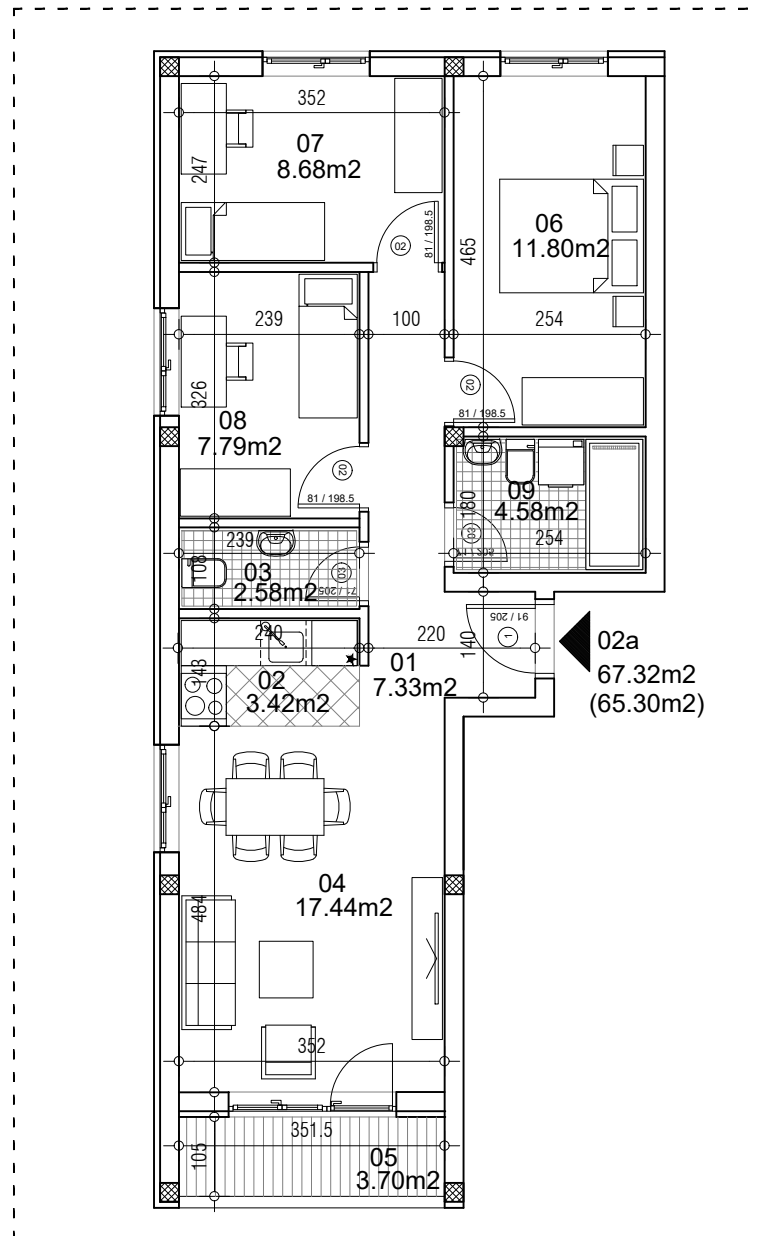


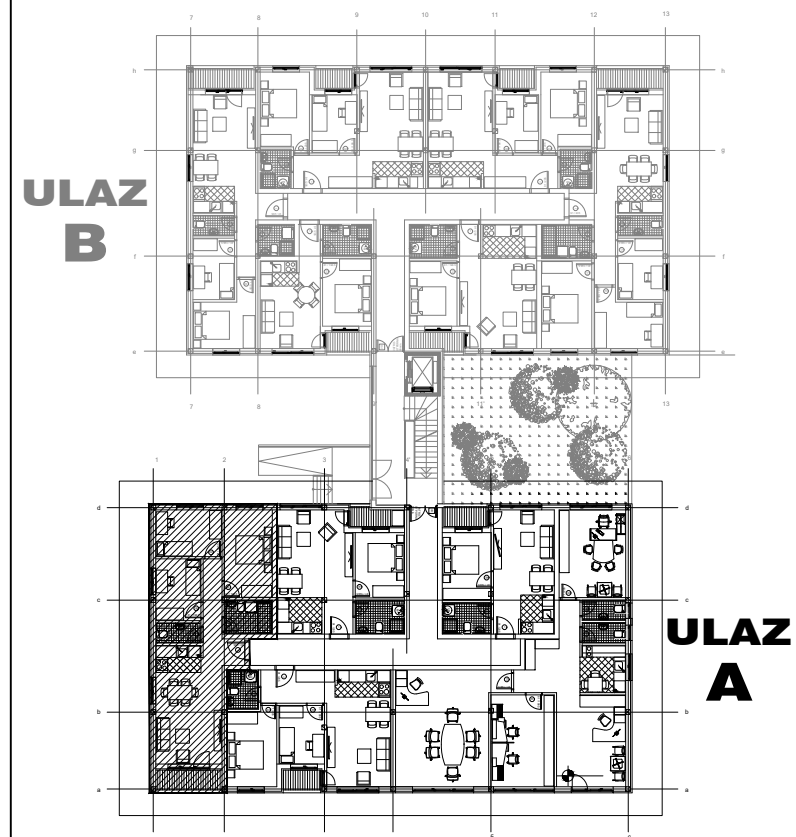
osnova stana
R = 1:100



STAN 2a ČETVOROSOBAN

1	ULAZNI HODNIK	7.33m ²
2	KUHINJA	3.42m ²
3	TOALET	2.58m ²
4	DNEVNA SOBA	17.44m ²
5	TERASA	3.70m ²
6	SPAVAĆA SOBA	11.80m ²
7	SPAVAĆA SOBA	8.68m ²
8	SPAVAĆA SOBA	7.79m ²
9	KUPATILO	4.58m ²
UKUPNO STAN 2a :		67.32m ²
		- 3% (65.30m²)

OSNOVA PRIZEMLJA



ulica Ćirila i Metodija br.50-52-54

ULAZ A: PRIZEMLJE/STAN 2a