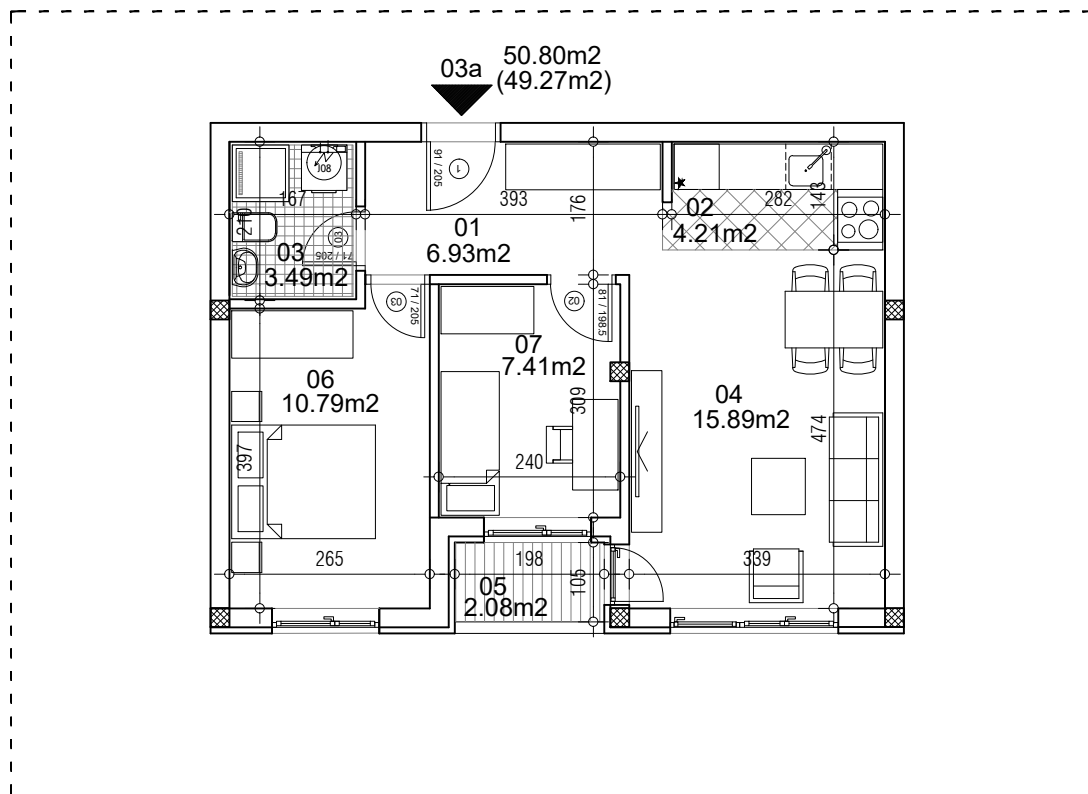


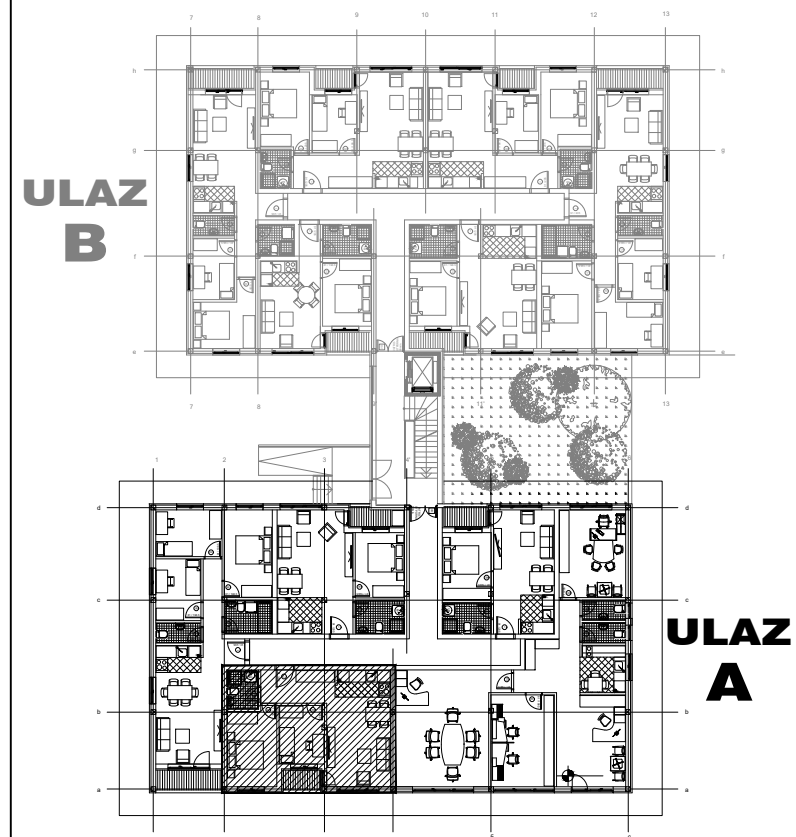
osnova stana
R = 1:100



STAN 3a TROSOBAN

1	ULAZNI HODNIK	6.93m ²
2	KUHINJA	4.21m ²
3	KUPATILO	3.49m ²
4	DNEVNA SOBA	15.89m ²
5	TERASA	2.08m ²
6	SPAVAĆA SOBA	10.79m ²
7	SPAVAĆA SOBA	7.41m ²
UKUPNO STAN 3a :		50.80m²
		- 3% (49.27m²)

OSNOVA PRIZEMLJA



ulica Ćirila i Metodija br.50-52-54

ULAZ A: PRIZEMLJE/STAN 3a