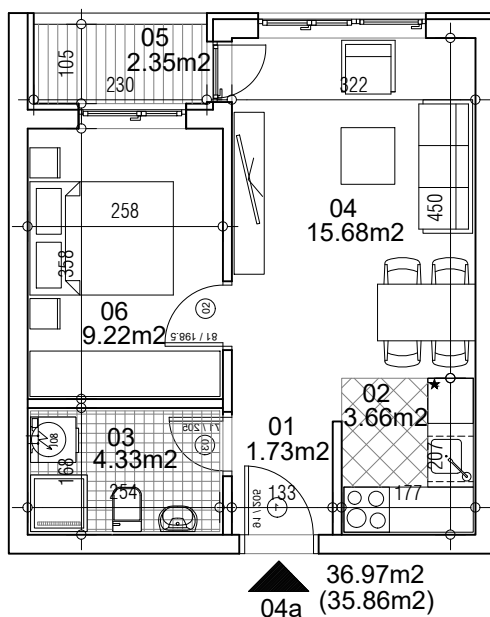


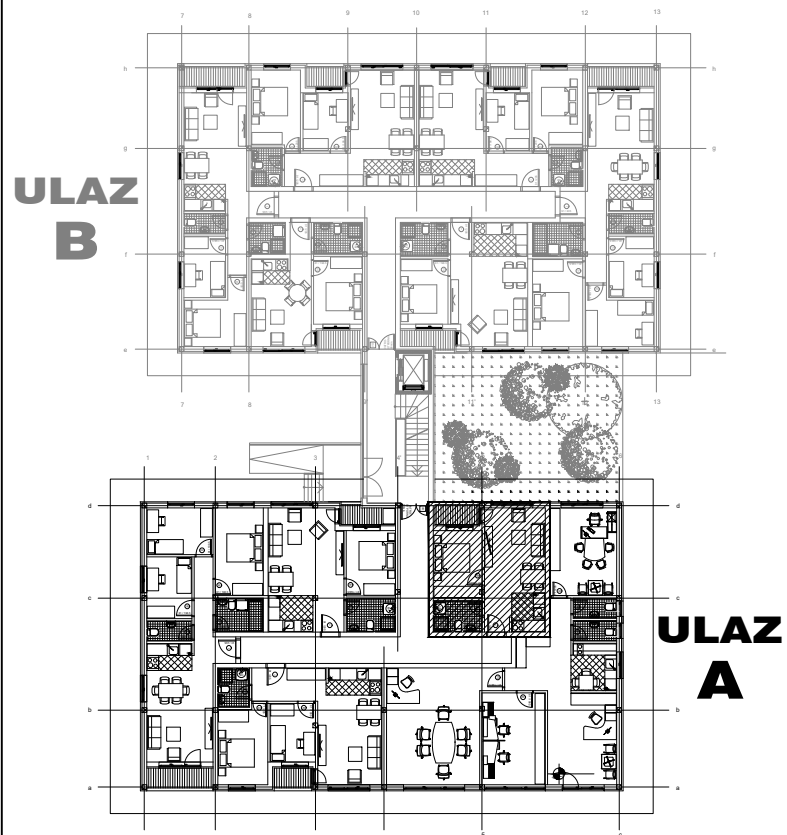
osnova stana
R = 1:100



STAN 4a DVOSOBAN

1	ULAZNI HODNIK	2.56m ²
2	KUHINJA	4.58m ²
3	KUPATILO	4.68m ²
4	DNEVNA SOBA	18.49m ²
5	TERASA	2.62m ²
6	SPAVAĆA SOBA	8.97m ²
UKUPNO STAN 4a :		41.90m ²
		- 3% (40.64m²)

OSNOVA PRIZEMLJA



ulica Ćirila i Metodija br.50-52-54

ULAZ A: PRIZEMLJE/STAN 4a