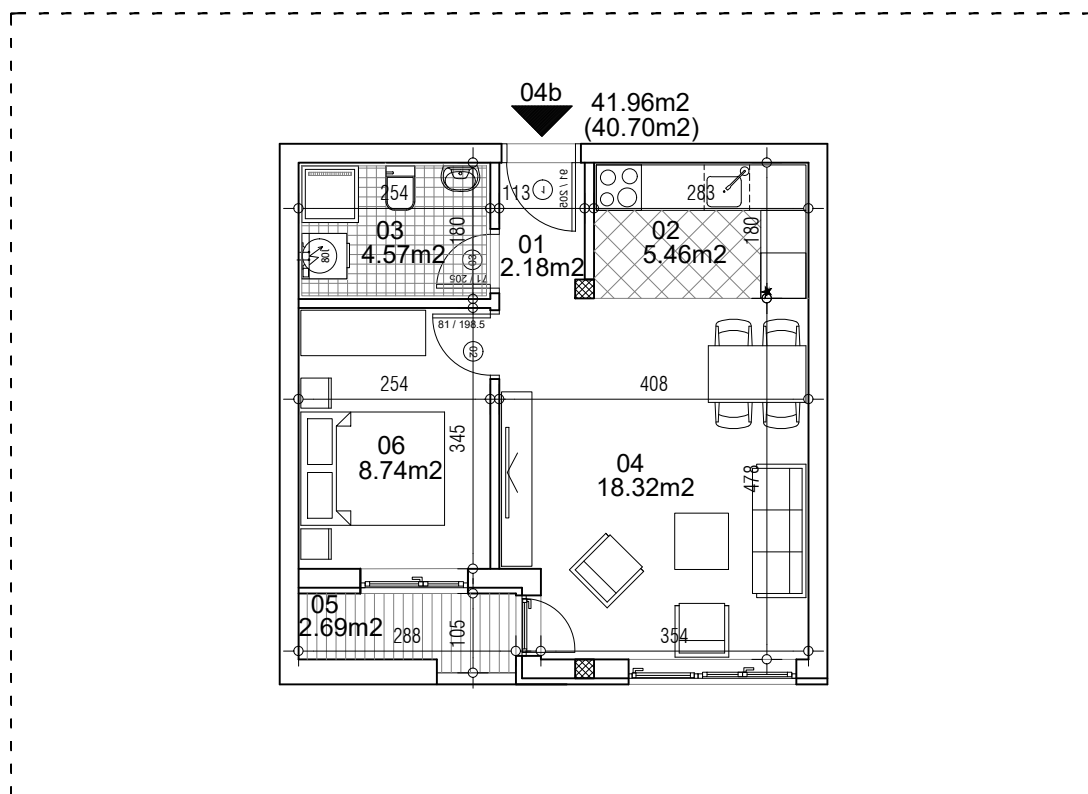


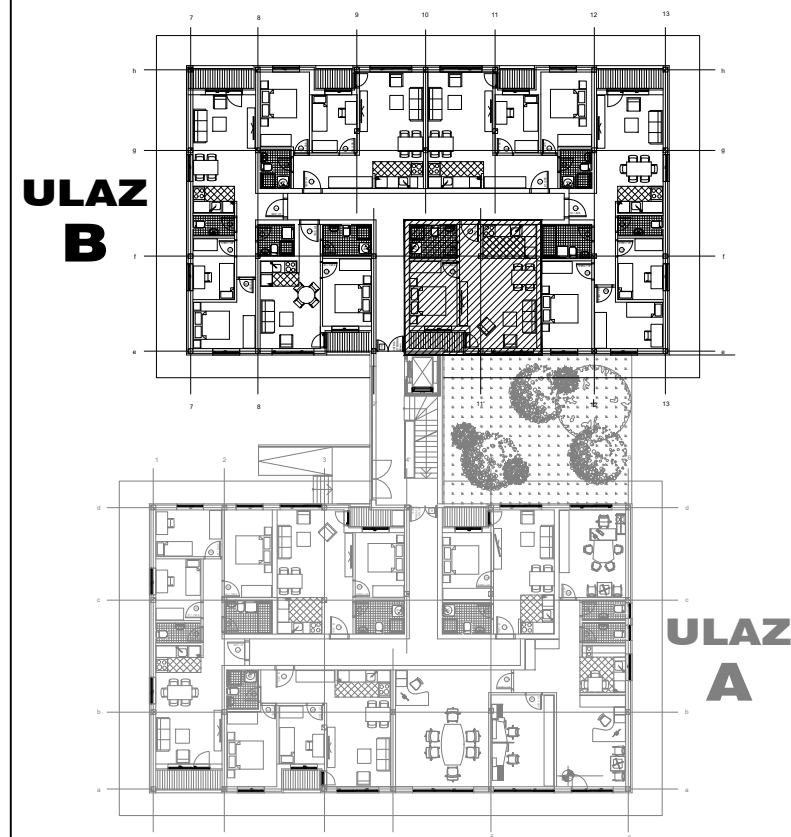
**osnova stana**  
**R = 1:100**



**STAN 4b DVOSOBAN**

<b>1</b>	<b>ULAZNI HODNIK</b>	2.18m <sup>2</sup>
<b>2</b>	<b>KUHINJA</b>	5.46m <sup>2</sup>
<b>3</b>	<b>KUPATILO</b>	4.57m <sup>2</sup>
<b>4</b>	<b>DNEVNA SOBA</b>	18.32m <sup>2</sup>
<b>5</b>	<b>TERASA</b>	2.69m <sup>2</sup>
<b>6</b>	<b>SPAVAĆA SOBA</b>	8.74m <sup>2</sup>
<b>UKUPNO STAN 4b :</b>		41.96m <sup>2</sup>
		- 3% (40.70m <sup>2</sup> )

**OSNOVA PRIZEMLJA**



**ulica Ćirila i Metodija br.50-52-54**

**ULAZ B: PRIZEMLJE/STAN 4b**