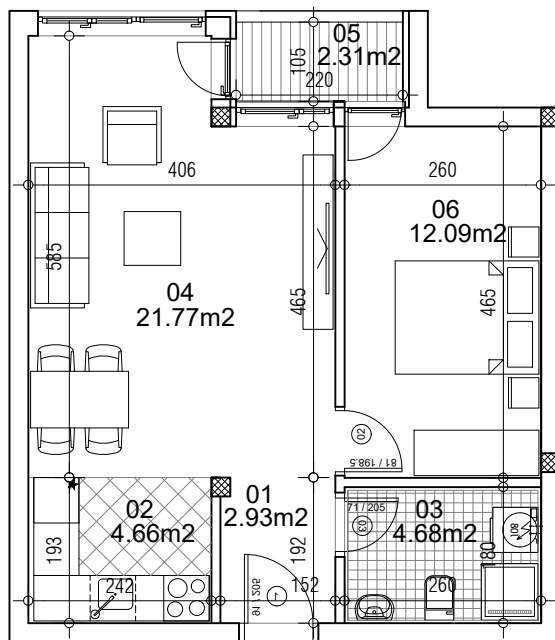


osnova stana
R = 1:100

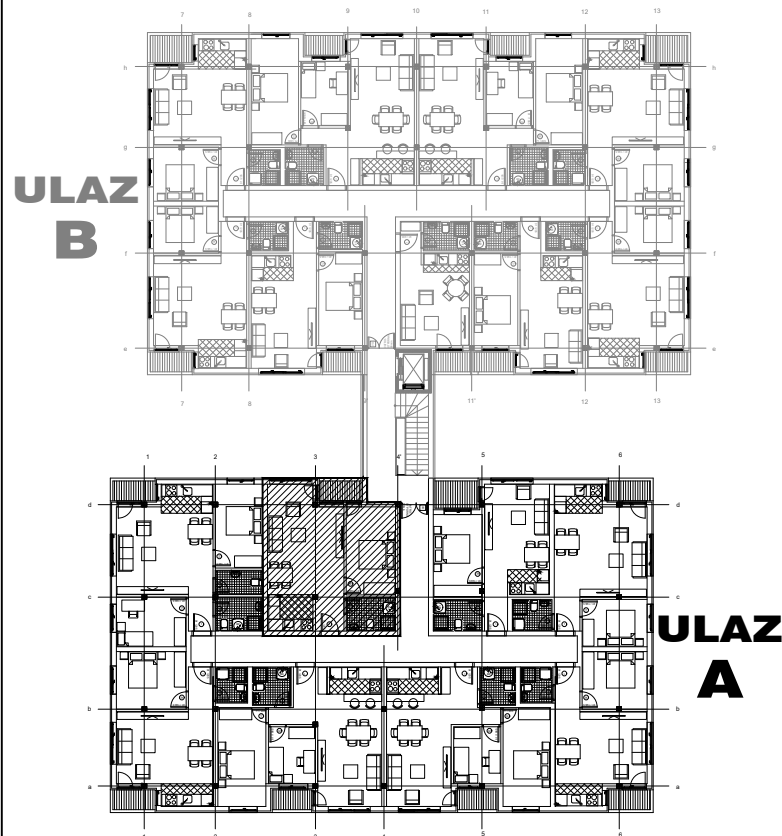


▲ 48.45m²
05a (46.99m²)

STAN 5a DVOSOBAN

1	ULAZNI HODNIK	2.93m ²
2	KUHINJA	4.66m ²
3	KUPATILO	4.68m ²
4	DNEVNA SOBA	21.77m ²
5	TERASA	2.31m ²
6	SPAVAĆA SOBA	12.09m ²
UKUPNO STAN 5a :		48.45m²
		- 3% (46.99m²)

OSNOVA I SPRATA



ulica Ćirila i Metodija br.50-52-54

ULAZ A: I SPRAT/STAN 5a