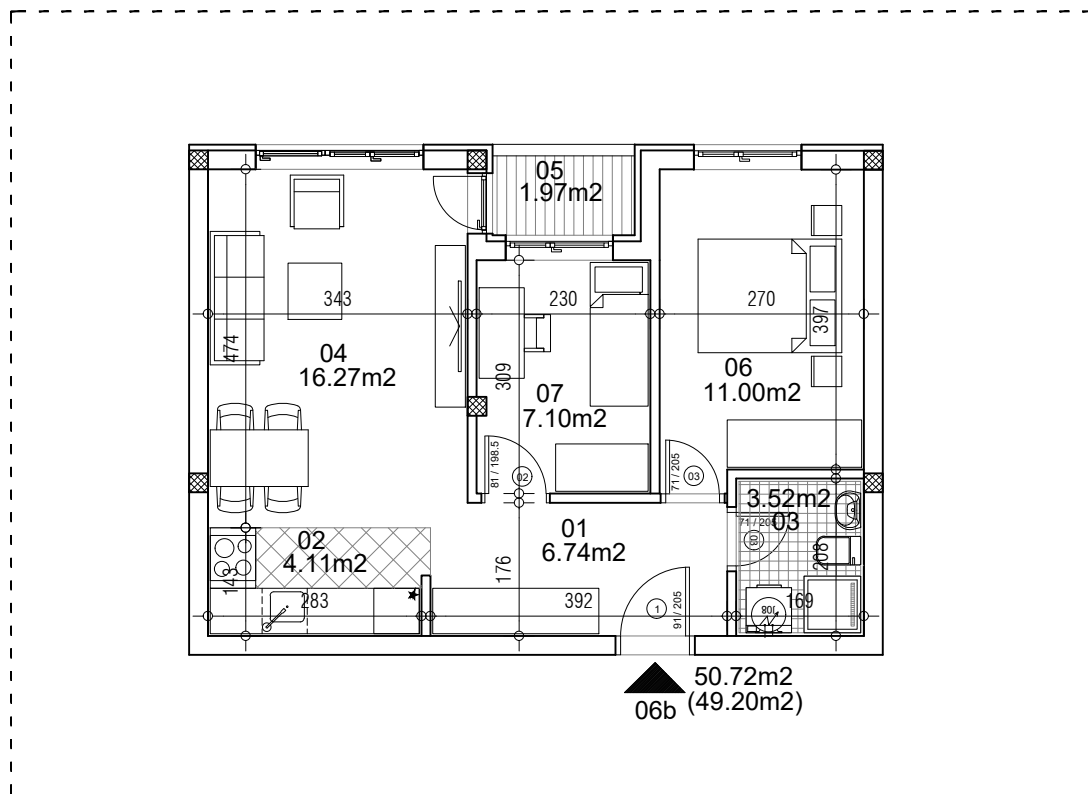


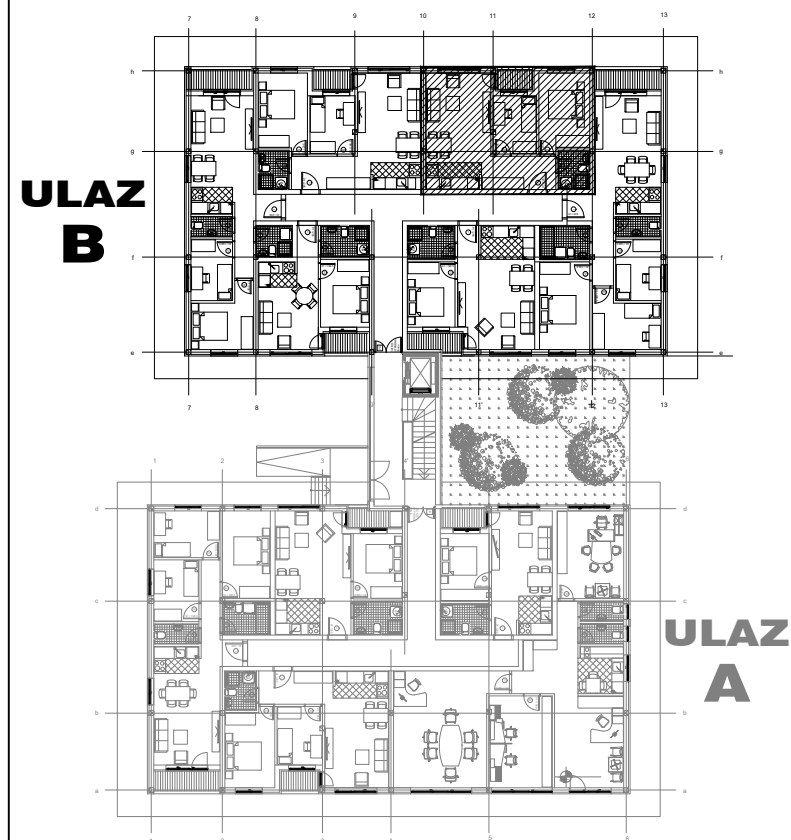
osnova stana
R = 1:100



STAN 6b TROSOBAN

1	ULAZNI HODNIK	6.74m ²
2	KUHINJA	4.11m ²
3	KUPATILO	3.52m ²
4	DNEVNA SOBA	16.27m ²
5	TERASA	1.97m ²
6	SPAVAĆA SOBA	11.00m ²
7	SPAVAĆA SOBA	7.10m ²
UKUPNO STAN 6b :		50.72m²
		- 3% (49.20m²)

OSNOVA PRIZEMLJA



ulica Ćirila i Metodija br.50-52-54

ULAZ B: PRIZEMLJE/STAN 6b