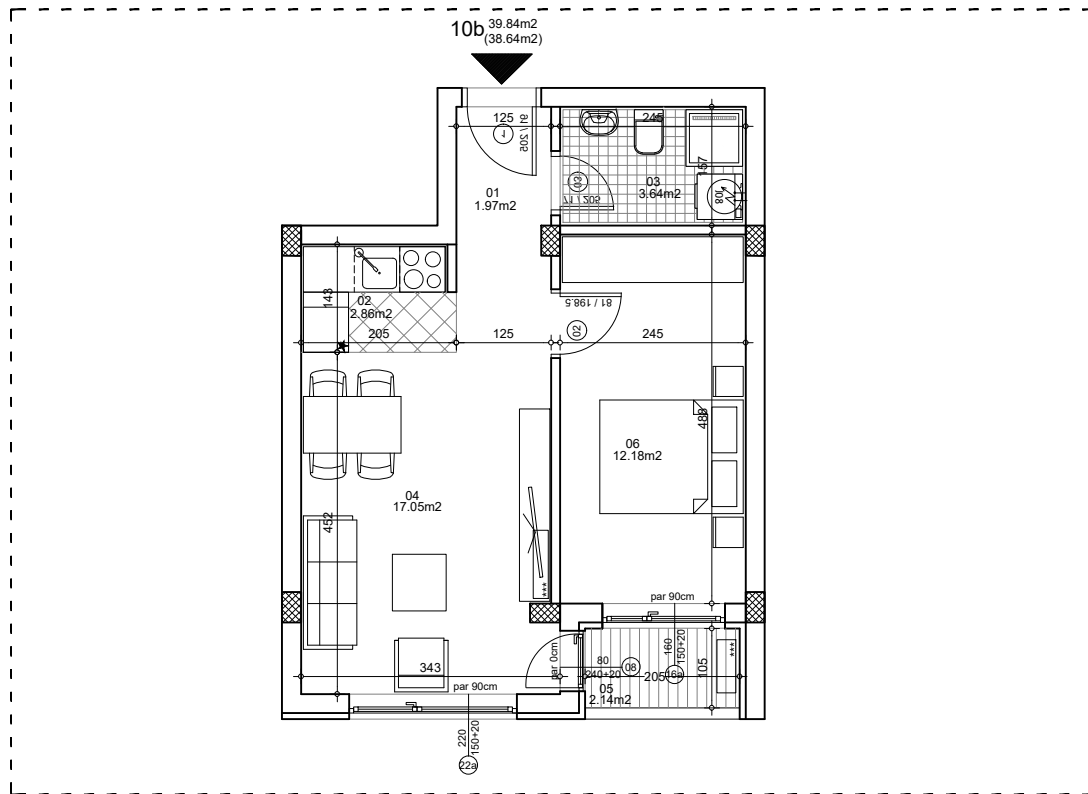




**osnova stana**  
**R = 1:100**



**ulica Ćirila i Metodija br.50-52-54**

**STAN 10b DVOSOBAN**

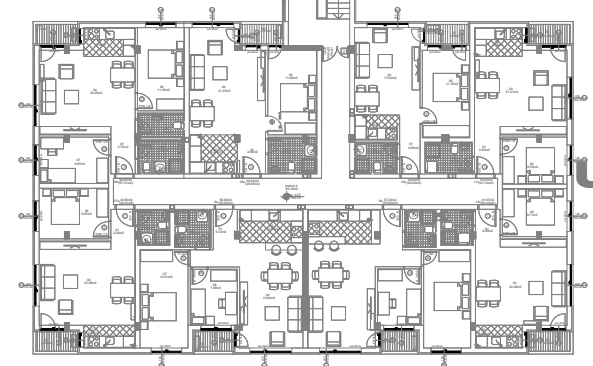
<b>1</b>	<b>ULAZNI HODNIK</b>	1.97m <sup>2</sup>
<b>2</b>	<b>KUHINJA</b>	2.86m <sup>2</sup>
<b>3</b>	<b>KUPATILO</b>	3.64m <sup>2</sup>
<b>4</b>	<b>DNEVNA SOBA</b>	17.05m <sup>2</sup>
<b>5</b>	<b>TERASA</b>	2.14m <sup>2</sup>
<b>6</b>	<b>SPAVAĆA SOBA</b>	12.18m <sup>2</sup>
<b>UKUPNO STAN 10b :</b>		<b>39.84m<sup>2</sup></b>
		<b>- 3% (38.64m<sup>2</sup>)</b>

**OSNOVA I SPRATA**

**ULAZ B**



**ULAZ A**



**ULAZ B: I SPRAT/STAN 10b**