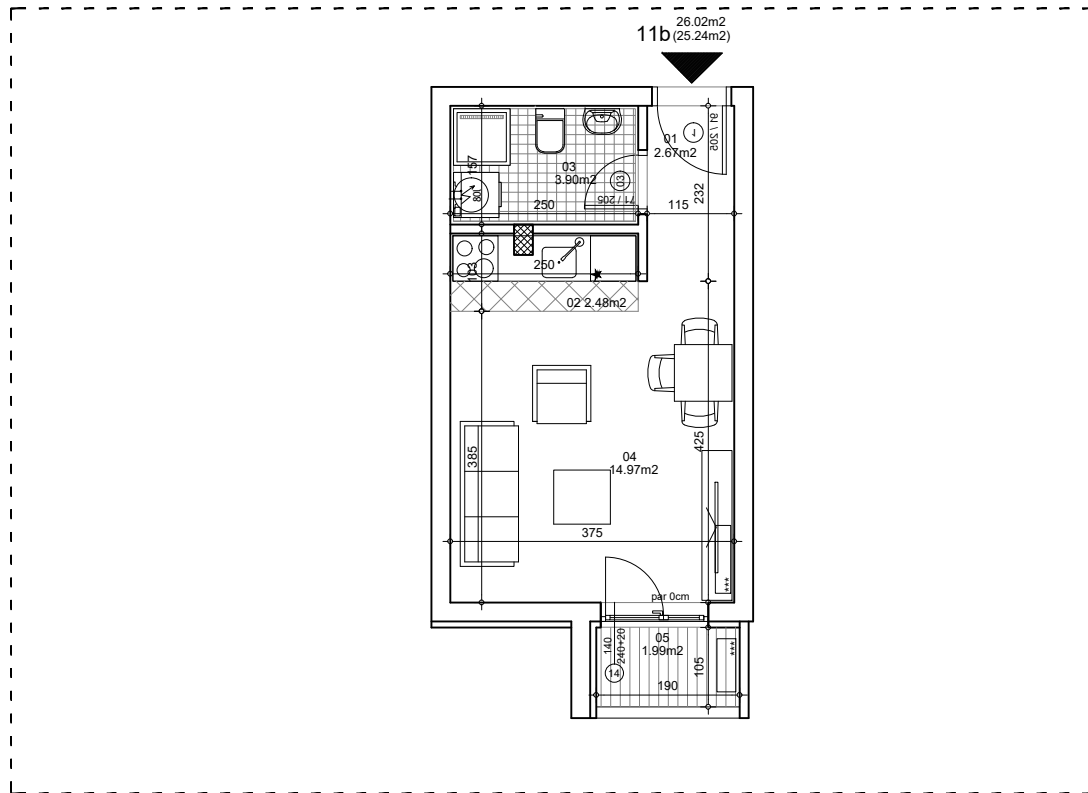




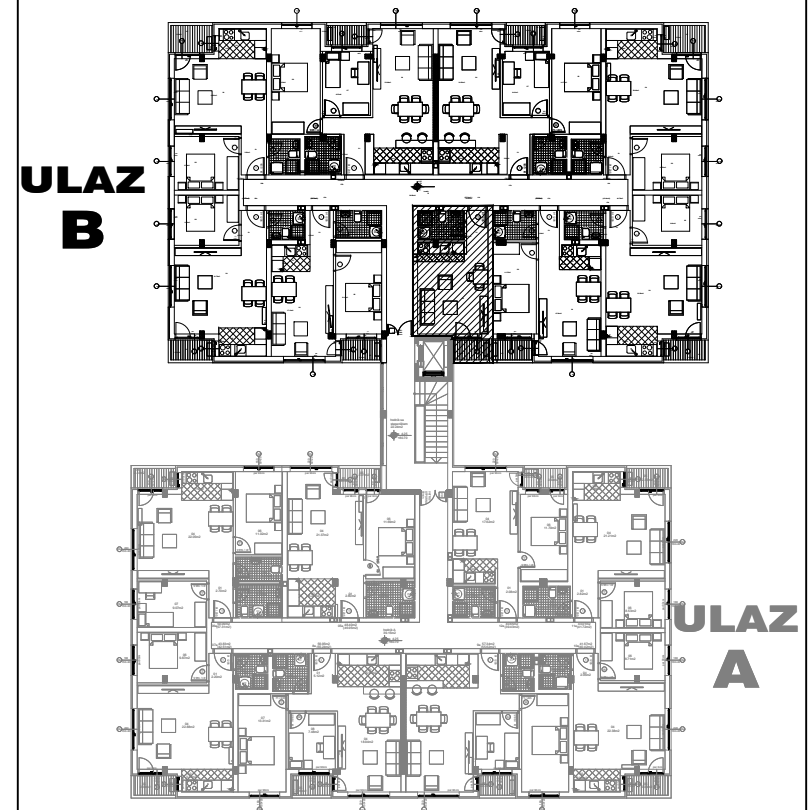
**osnova stana**  
**R = 1:100**



**STAN 11b GARSONJERA**

<b>1</b>	<b>ULAZNI HODNIK</b>	2.67m <sup>2</sup>
<b>2</b>	<b>KUHINJA</b>	2.48m <sup>2</sup>
<b>3</b>	<b>KUPATILO</b>	3.90m <sup>2</sup>
<b>4</b>	<b>DNEVNA SOBA</b>	14.97m <sup>2</sup>
<b>5</b>	<b>TERASA</b>	1.99m <sup>2</sup>
<b>UKUPNO STAN 11b :</b>		26.02m <sup>2</sup>
		<b>- 3% (25.24m<sup>2</sup>)</b>

**OSNOVA I SPRATA**



**ulica Ćirila i Metodija br.50-52-54**

**ULAZ B: I SPRAT/STAN 11b**