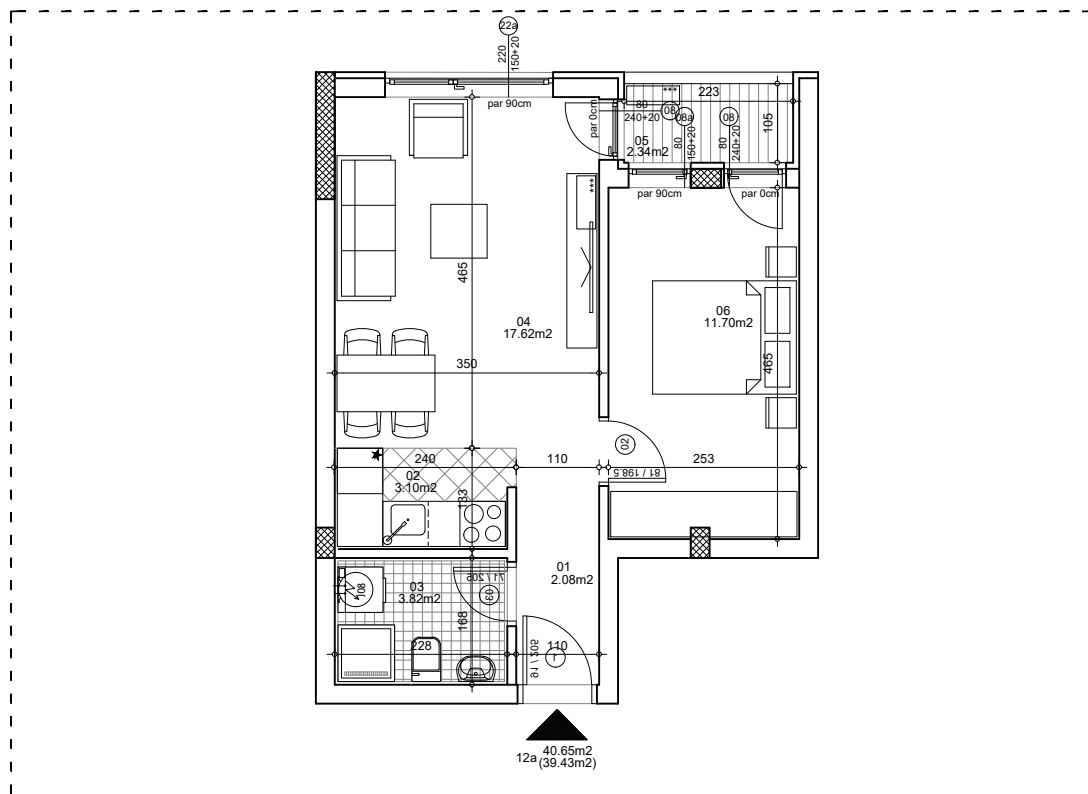




osnova stana
R = 1:100

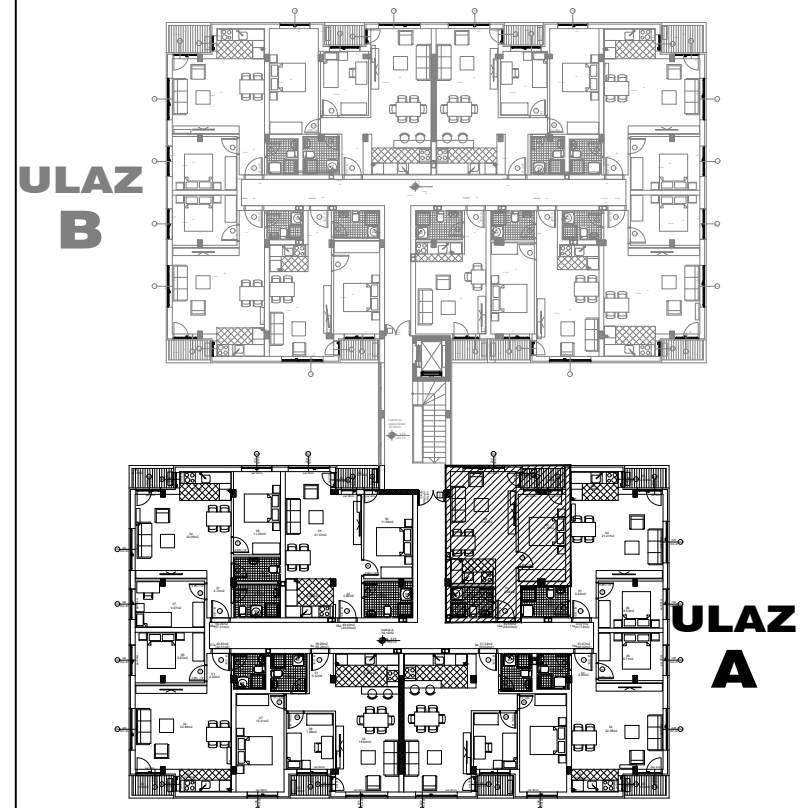


ulica Ćirila i Metodija br.50-52-54

STAN 12a DVOSOBAN

1	ULAZNI HODNIK	2.08m ²
2	KUHINJA	3.10m ²
3	KUPATILO	3.82m ²
4	DNEVNA SOBA	17.62m ²
5	TERASA	2.34m ²
6	SPAVAĆA SOBA	11.70m ²
UKUPNO STAN 12a :		40.65m ²
		- 3% (39.43m²)

OSNOVA I SPRATA



ULAZ A: I SPRAT/STAN 12a