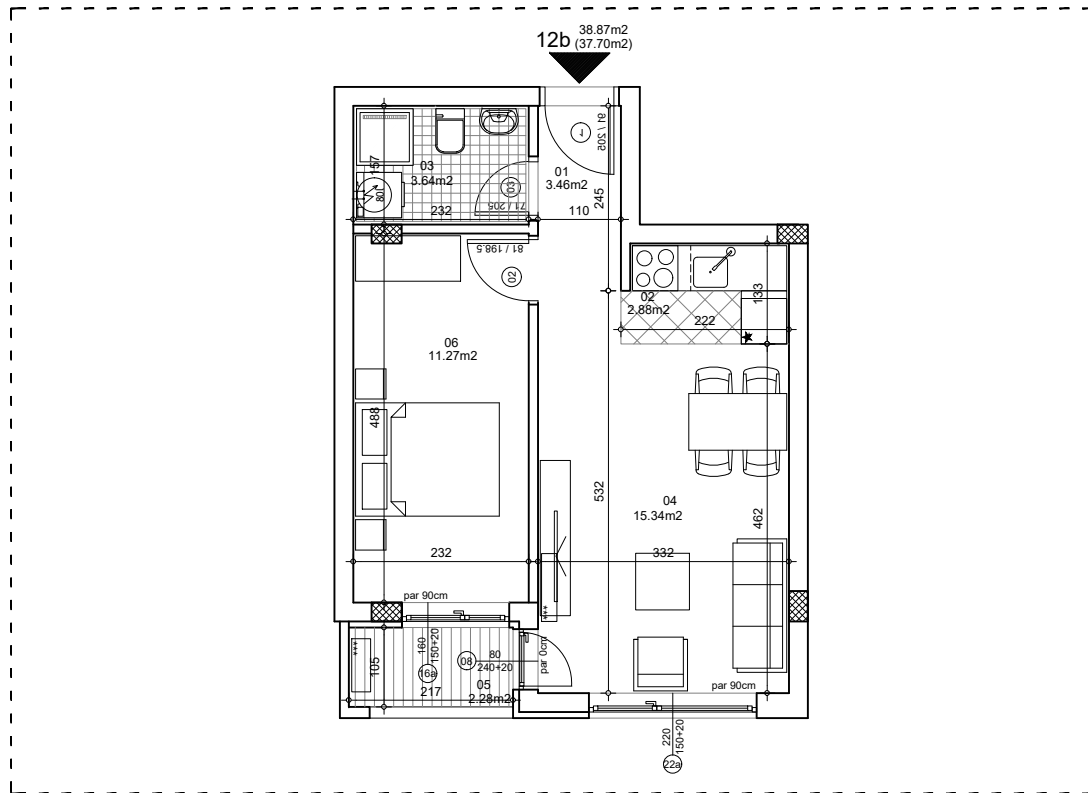




osnova stana
R = 1:100



STAN 12b DVOSOBAN

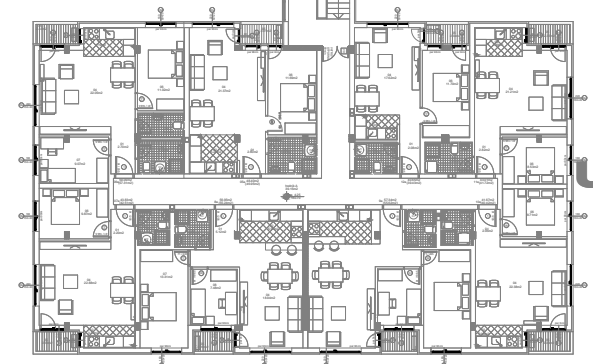
1	ULAZNI HODNIK	3.46m ²
2	KUHINJA	2.88m ²
3	KUPATILO	3.64m ²
4	DNEVNA SOBA	15.34m ²
5	TERASA	2.28m ²
6	SPAVAĆA SOBA	11.27m ²
UKUPNO STAN 12b :		38.87m²
		- 3% (37.70m²)

OSNOVA I SPRATA

**ULAZ
B**



**ULAZ
A**



ulica Ćirila i Metodija br.50-52-54

ULAZ B: I SPRAT/STAN 12b