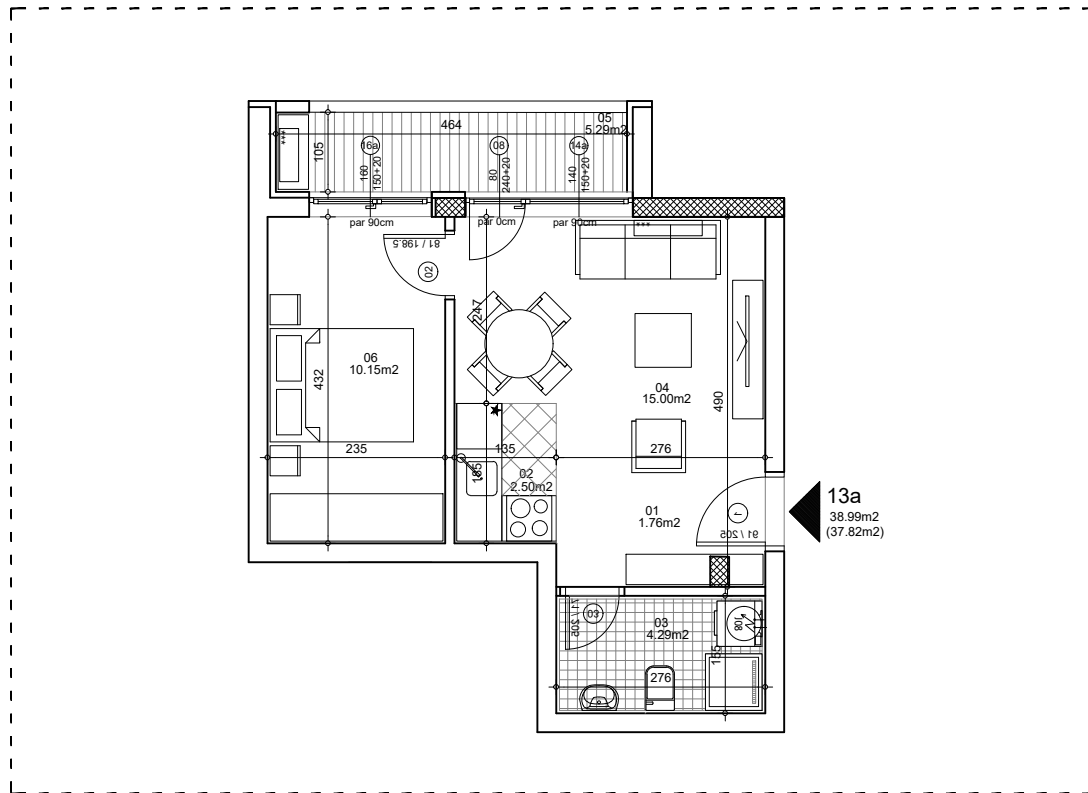




**osnova stana**  
**R = 1:100**

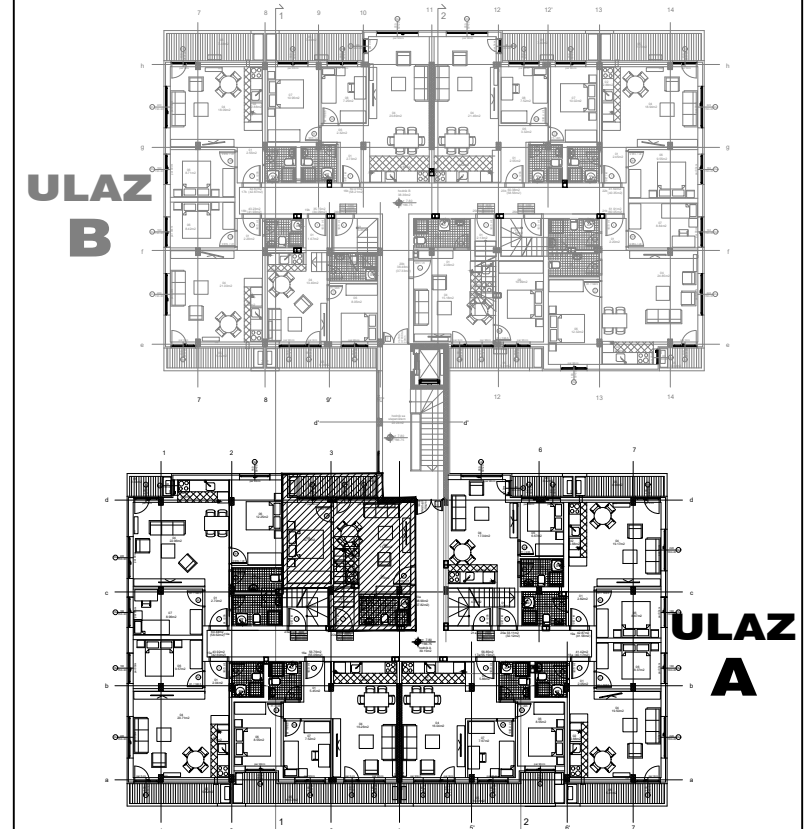


13a  
38.99m<sup>2</sup>  
(37.82m<sup>2</sup>)

**STAN 13a DVOSOBAN**

<b>1</b>	<b>ULAZNI HODNIK</b>	1.76m <sup>2</sup>
<b>2</b>	<b>KUHINJA</b>	2.50m <sup>2</sup>
<b>3</b>	<b>KUPATILO</b>	4.29m <sup>2</sup>
<b>4</b>	<b>DNEVNA SOBA</b>	15.00m <sup>2</sup>
<b>5</b>	<b>TERASA-OSTAVA</b>	5.29m <sup>2</sup>
<b>6</b>	<b>SPAVAĆA SOBA</b>	10.15m <sup>2</sup>
<b>UKUPNO STAN 13a :</b>		<b>38.99m<sup>2</sup></b>
		<b>- 3% (37.82m<sup>2</sup>)</b>

**OSNOVA POTKROVLJA**



**ulica Ćirila i Metodija br.50-52-54**

**ULAZ A: POTKROVLJE/STAN 13a**