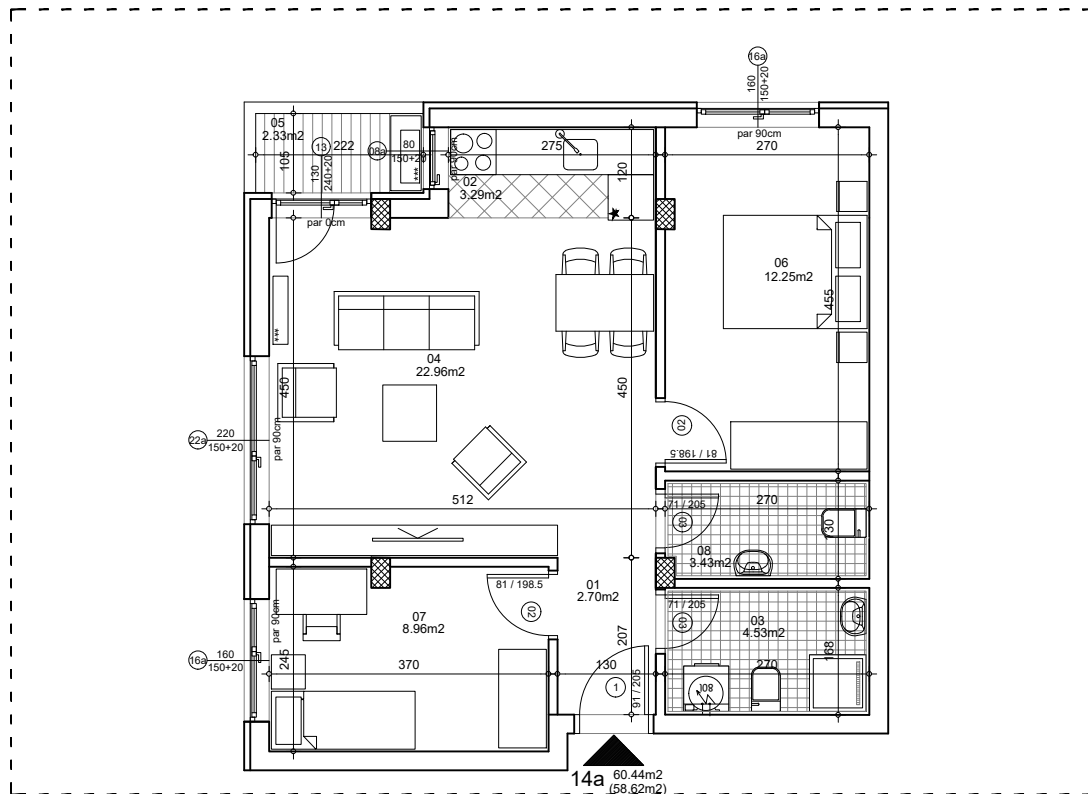




**osnova stana**  
**R = 1:100**

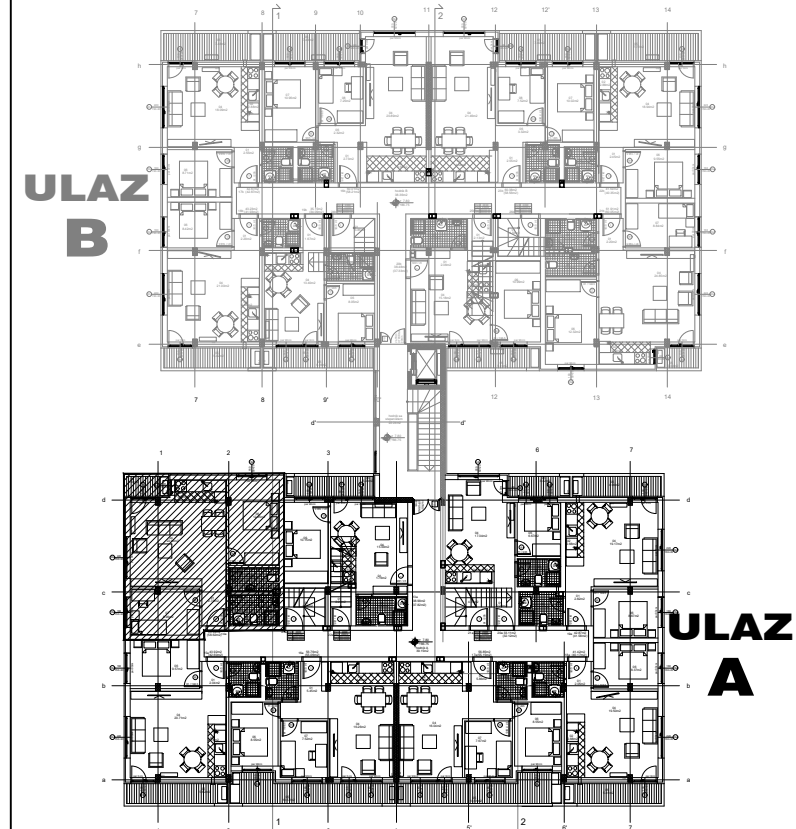


**ulica Ćirila i Metodija br.50-52-54**

**STAN 14a TROSOBAN**

<b>1</b>	<b>ULAZNI HODNIK</b>	2.70m <sup>2</sup>
<b>2</b>	<b>KUHINJA</b>	3.29m <sup>2</sup>
<b>3</b>	<b>KUPATILO</b>	3.43m <sup>2</sup>
<b>4</b>	<b>DNEVNA SOBA</b>	22.96m <sup>2</sup>
<b>5</b>	<b>TERASA</b>	2.33m <sup>2</sup>
<b>6</b>	<b>SPAVAĆA SOBA</b>	12.25m <sup>2</sup>
<b>7</b>	<b>SPAVAĆA SOBA</b>	8.96m <sup>2</sup>
<b>8</b>	<b>TOALET</b>	3.43m <sup>2</sup>
<b>UKUPNO STAN 14a :</b>		60.44m <sup>2</sup>
		- 3% (58.62m <sup>2</sup> )

**OSNOVA POTKROVLJA**



**ULAZ A: POTKROVLJE/STAN 14a**