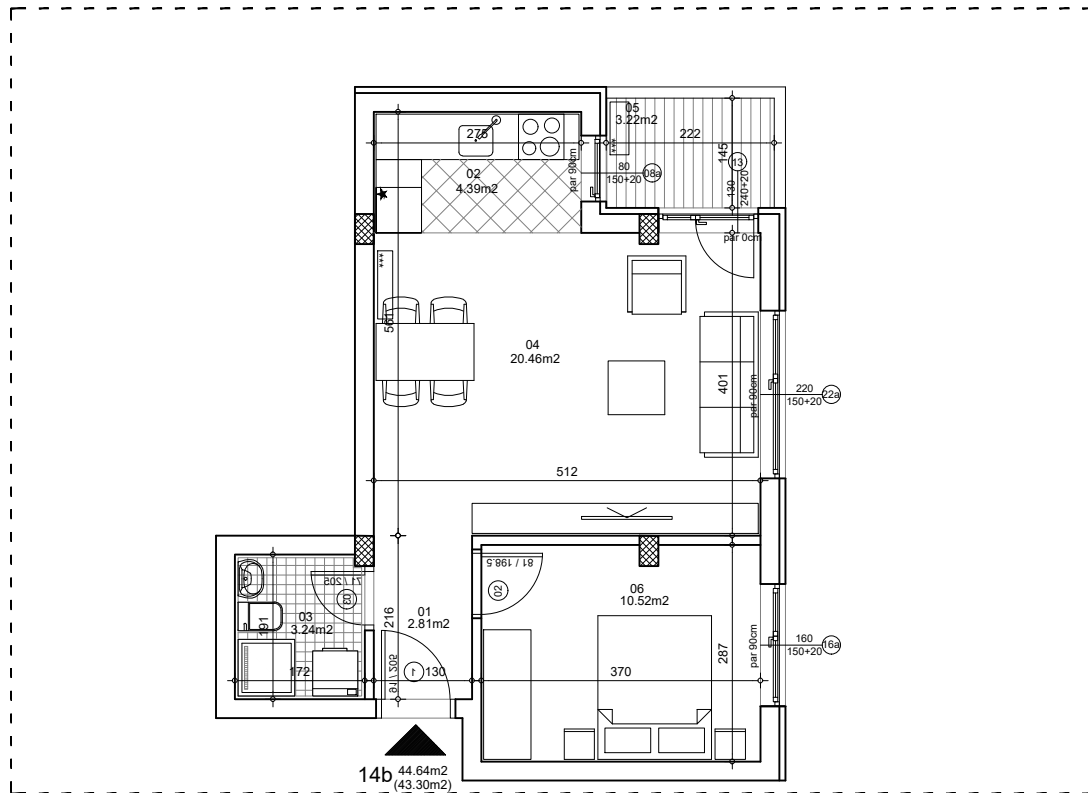




osnova stana
R = 1:100



14b 44.64m²
(43.30m²)



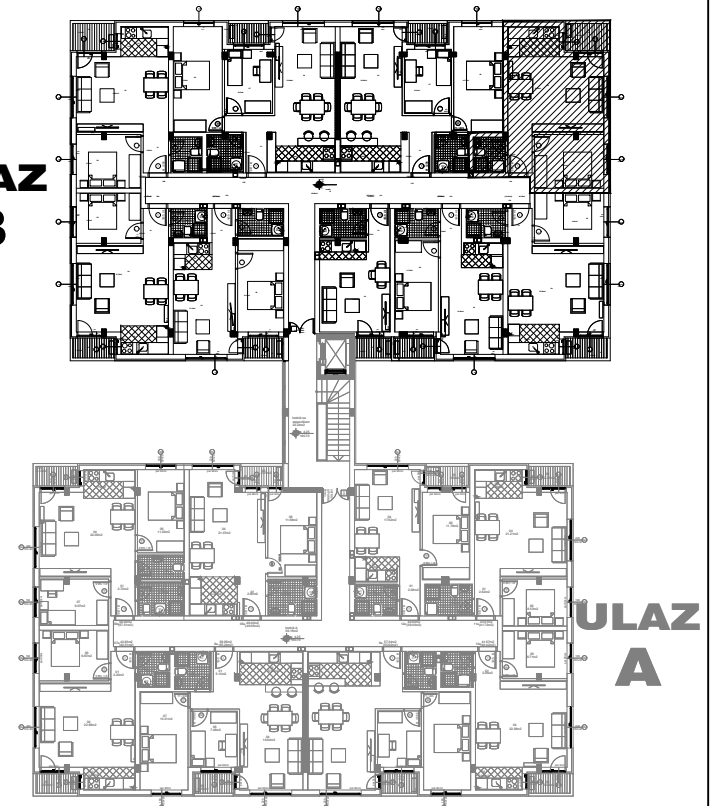
ulica Ćirila i Metodija br.50-52-54

STAN 14b DVOSOBAN

1	ULAZNI HODNIK	2.81m ²
2	KUHINJA	4.39m ²
3	KUPATILO	3.24m ²
4	DNEVNA SOBA	20.46m ²
5	TERASA	3.22m ²
6	SPAVAĆA SOBA	10.52m ²
UKUPNO STAN 14b :		44.64m²
		- 3% (43.30m²)

OSNOVA I SPRATA

ULAZ B



ULAZ A

ULAZ B: I SPRAT/STAN 14b