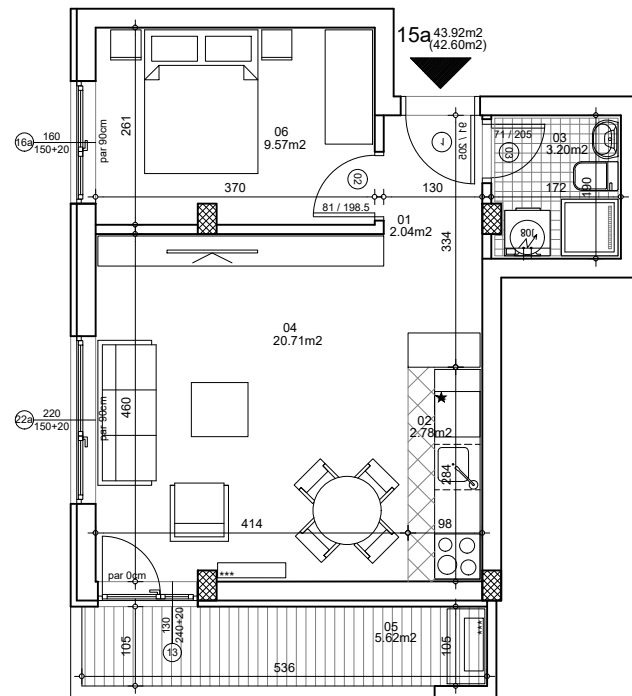




**osnova stana**  
**R = 1:100**

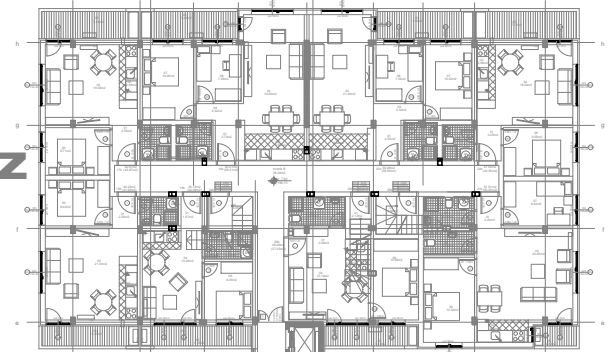


**STAN 15a DVOSOBAN**

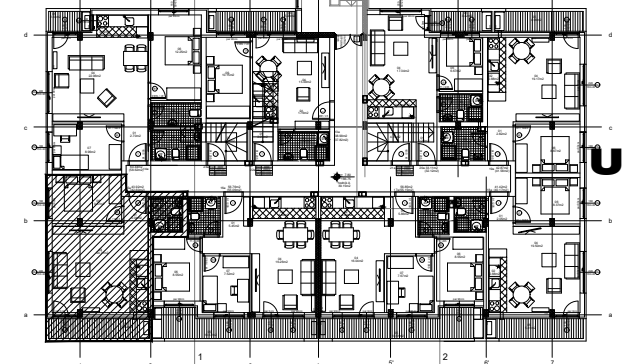
<b>1</b>	<b>ULAZNI HODNIK</b>	2.04m <sup>2</sup>
<b>2</b>	<b>KUHINJA</b>	2.78m <sup>2</sup>
<b>3</b>	<b>KUPATILO</b>	3.20m <sup>2</sup>
<b>4</b>	<b>DNEVNA SOBA</b>	20.71m <sup>2</sup>
<b>5</b>	<b>TERASA-OSTAVA</b>	5.62m <sup>2</sup>
<b>6</b>	<b>SPAVAĆA SOBA</b>	9.57m <sup>2</sup>
<b>UKUPNO STAN 15a :</b>		43.92m <sup>2</sup>
		<b>- 3% (42.60m<sup>2</sup>)</b>

**OSNOVA POTKROVLJA**

**ULAZ B**



**ULAZ A**



**ulica Ćirila i Metodija br.50-52-54**

**ULAZ A: POTKROVLJE/STAN 15a**