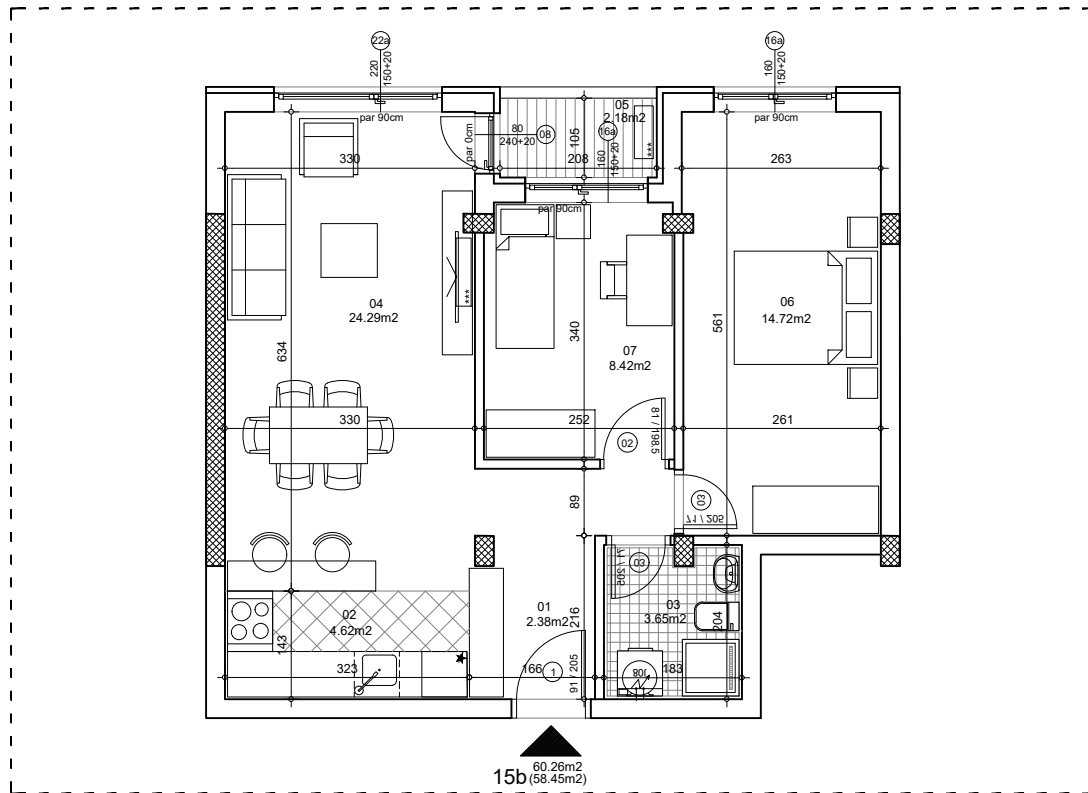




**osnova stana**  
**R = 1:100**

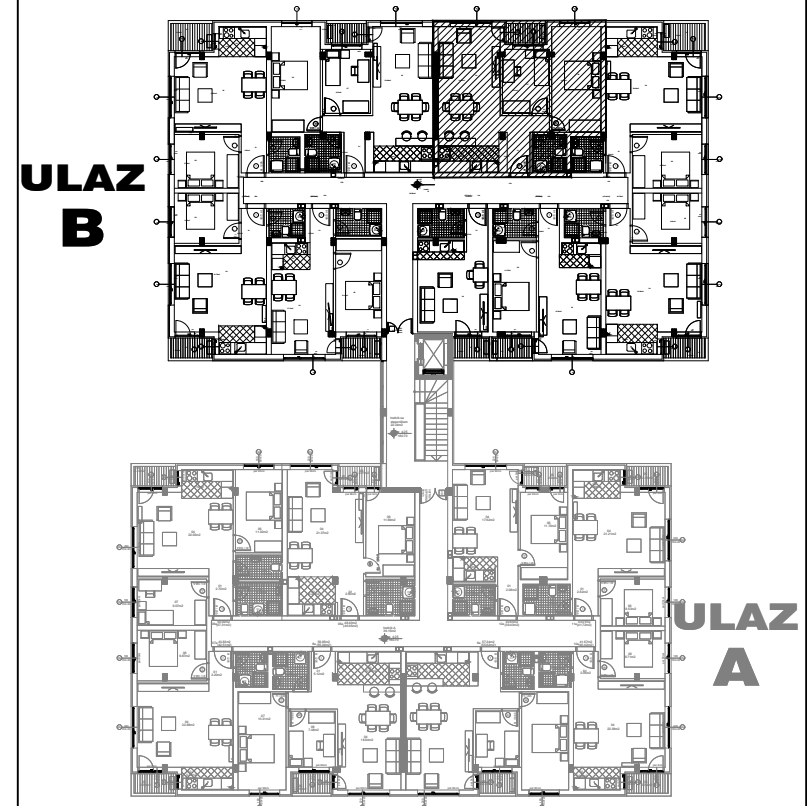


**ulica Ćirila i Metodija br.50-52-54**

**STAN 15b TROSOBAN**

<b>1</b>	<b>ULAZNI HODNIK</b>	2.38m <sup>2</sup>
<b>2</b>	<b>KUHINJA</b>	4.62m <sup>2</sup>
<b>3</b>	<b>KUPATILO</b>	3.65m <sup>2</sup>
<b>4</b>	<b>DNEVNA SOBA</b>	24.29m <sup>2</sup>
<b>5</b>	<b>TERASA</b>	2.18m <sup>2</sup>
<b>6</b>	<b>SPAVAĆA SOBA</b>	14.72m <sup>2</sup>
<b>7</b>	<b>SPAVAĆA SOBA</b>	8.42m <sup>2</sup>
<b>UKUPNO STAN 15b :</b>		<b>60.26m<sup>2</sup></b>
		<b>- 3% (58.45m<sup>2</sup>)</b>

**OSNOVA I SPRATA**



**ULAZ B: I SPRAT/STAN 15b**