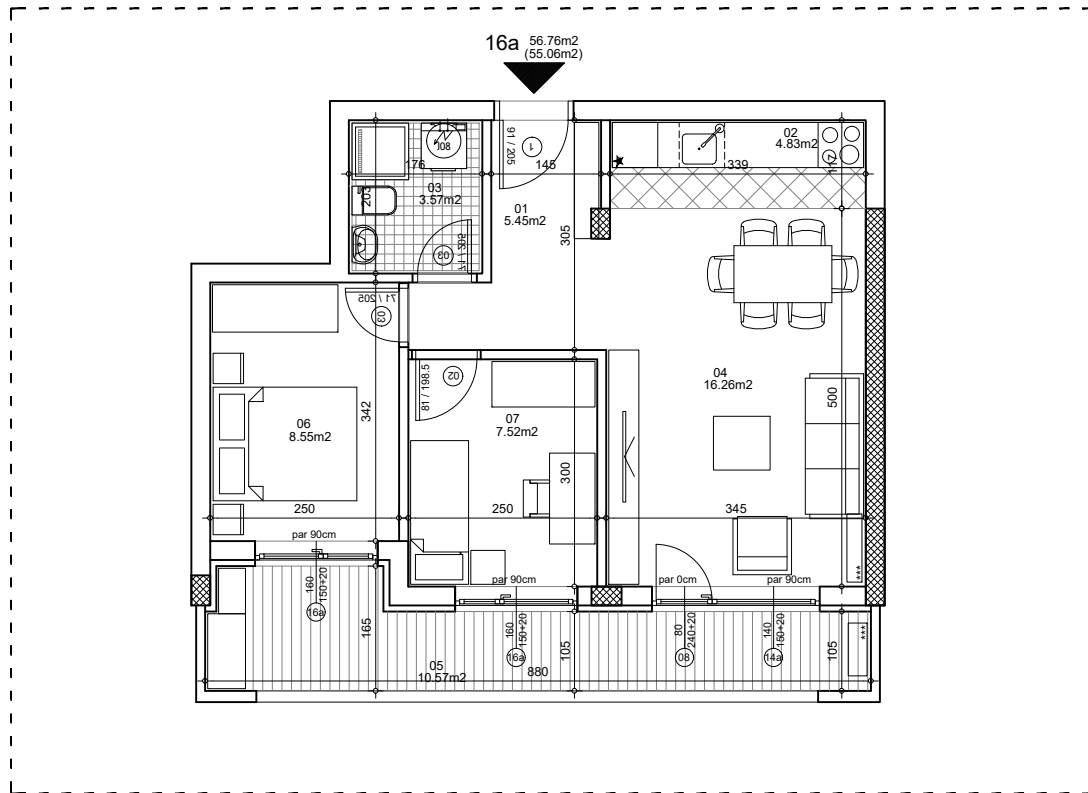




**osnova stana**  
**R = 1:100**

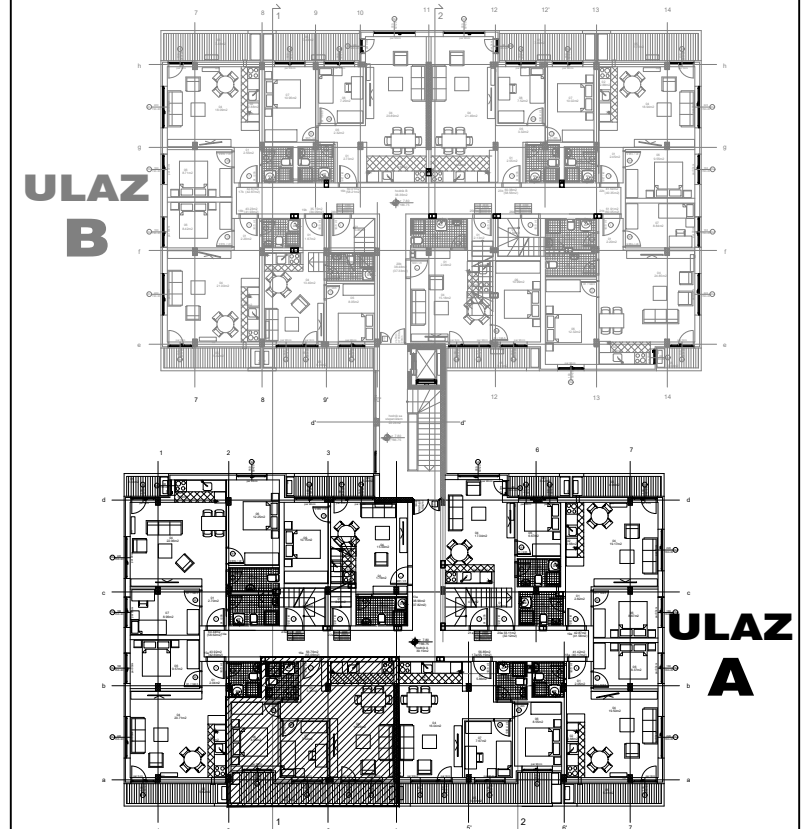


**ulica Ćirila i Metodija br.50-52-54**

**STAN 16a TROSOBAN**

<b>1</b>	<b>ULAZNI HODNIK</b>	5.45m <sup>2</sup>
<b>2</b>	<b>KUHINJA</b>	4.83m <sup>2</sup>
<b>3</b>	<b>KUPATILO</b>	3.57m <sup>2</sup>
<b>4</b>	<b>DNEVNA SOBA</b>	16.26m <sup>2</sup>
<b>5</b>	<b>TERASA-OSTAVA</b>	10.57m <sup>2</sup>
<b>6</b>	<b>SPAVAĆA SOBA</b>	8.55m <sup>2</sup>
<b>7</b>	<b>SPAVAĆA SOBA</b>	7.52m <sup>2</sup>
<b>UKUPNO STAN 16a :</b>		<b>56.76m<sup>2</sup></b>
		<b>- 3% (55.06m<sup>2</sup>)</b>

**OSNOVA POTKROVLJA**



**ULAZ A: POTKROVLJE/STAN 16a**