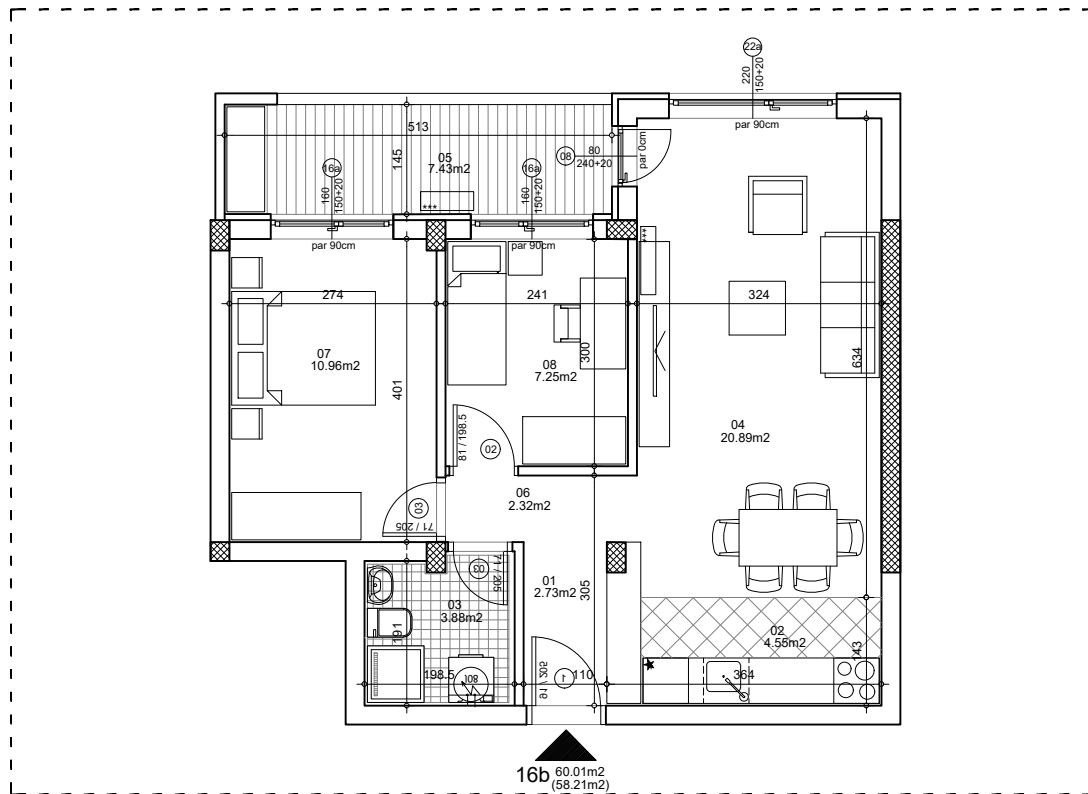




osnova stana
R = 1:100



ulica Ćirila i Metodija br.50-52-54

STAN 16b TROSOBAN

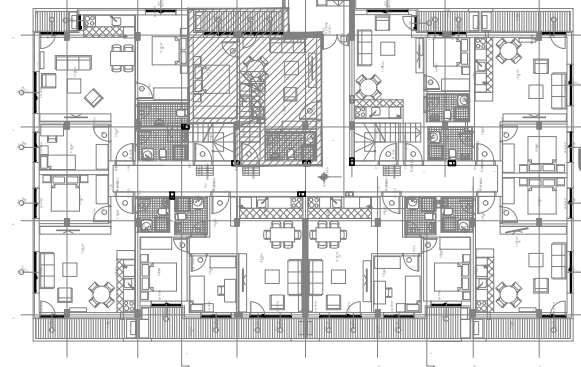
1	ULAZNI HODNIK	2.73m ²
2	KUHINJA	4.55m ²
3	KUPATILO	3.88m ²
4	DNEVNA SOBA	20.89m ²
5	TERASAOSTAVA	7.43m ²
6	DEGAŽMAN	2.32m ²
7	SPAVAĆA SOBA	10.96m ²
8	SPAVAĆA SOBA	7.25m ²
UKUPNO STAN 16b :		60.01m ²
		- 3% (58.21m²)

OSNOVA POTKROVLJA

ULAZ B



ULAZ A



ULAZ A: POTKROVLJE/STAN 16b