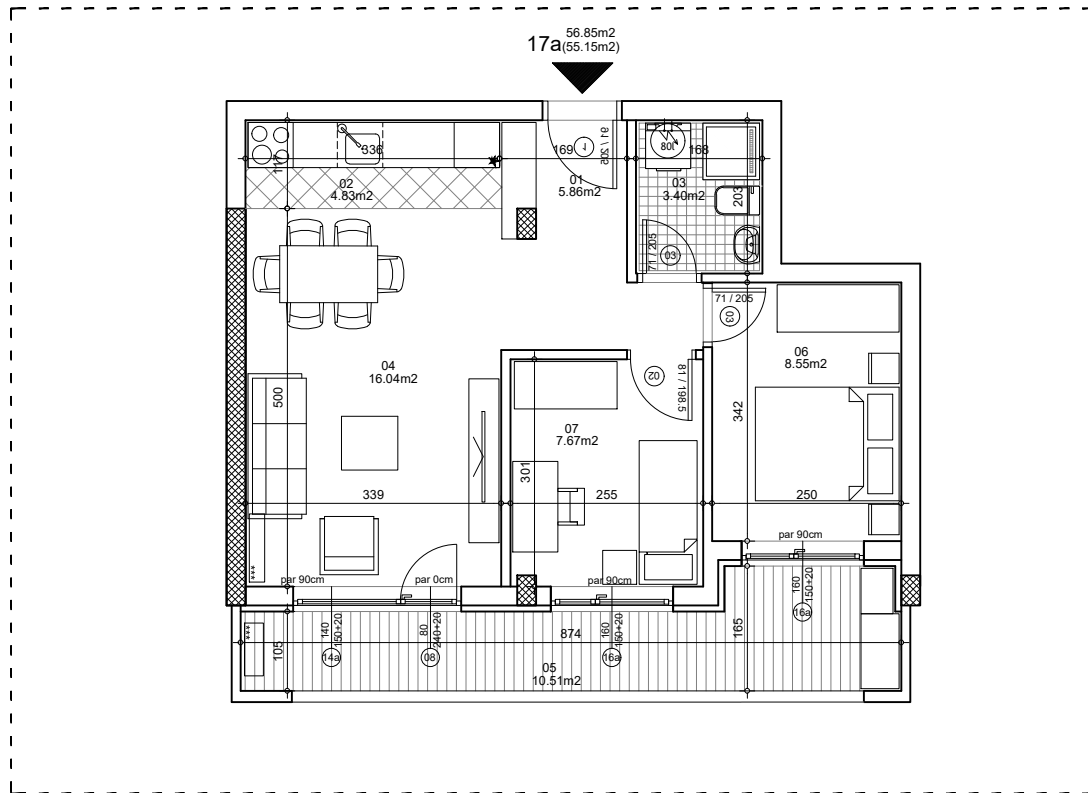




osnova stana
R = 1:100

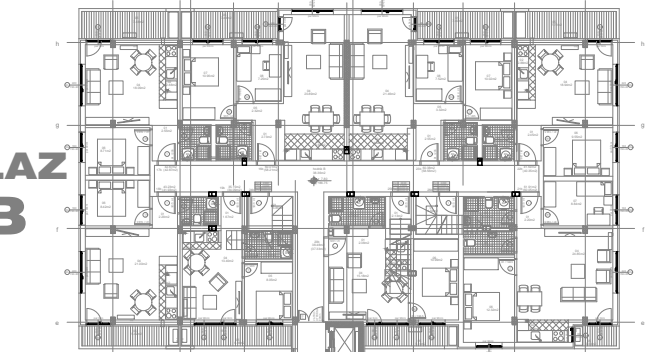


STAN 17a TROSOBAN

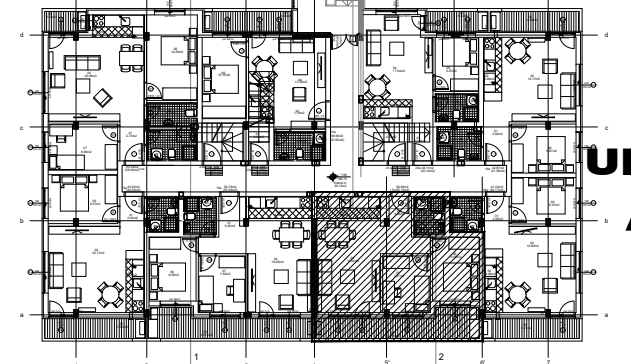
1	ULAZNI HODNIK	5.86m ²
2	KUHINJA	4.83m ²
3	KUPATILO	3.40m ²
4	DNEVNA SOBA	16.04m ²
5	TERASA-OSTAVA	10.51m ²
6	SPAVAĆA SOBA	8.55m ²
7	SPAVAĆA SOBA	7.67m ²
UKUPNO STAN 17a :		56.85m ²
		- 3% (55.15m²)

OSNOVA POTKROVLJA

**ULAZ
B**



**ULAZ
A**



ulica Ćirila i Metodija br.50-52-54

ULAZ A: POTKROVLJE/STAN 17a