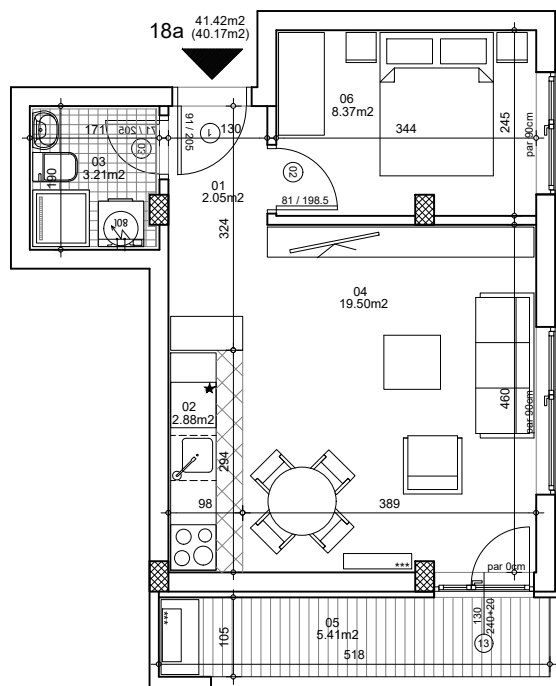




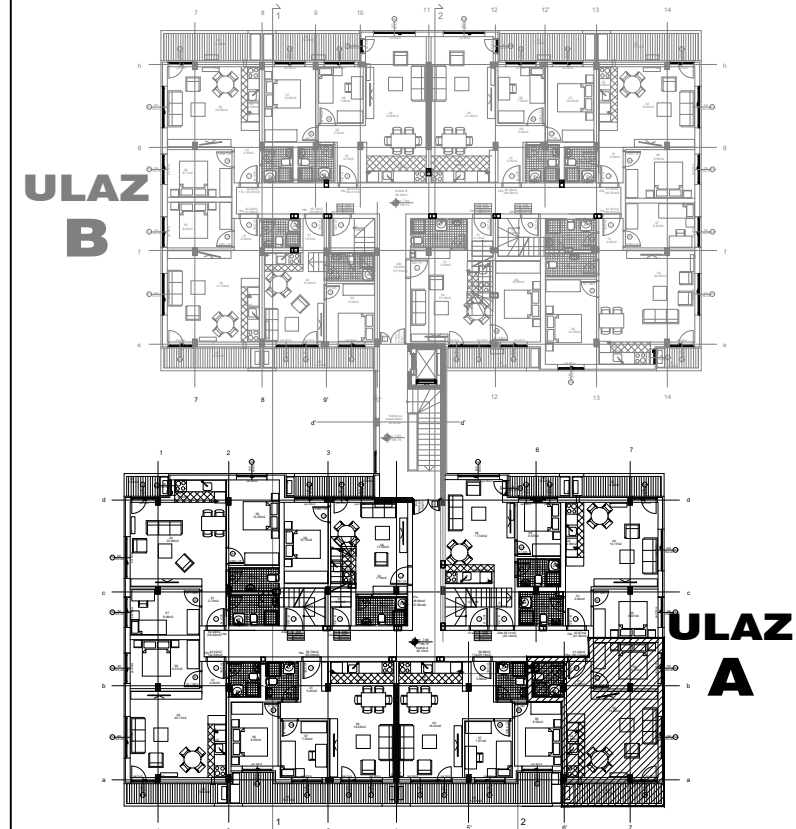
osnova stana
R = 1:100



STAN 18a DVOSOBAN

1	ULAZNI HODNIK	2.05m ²
2	KUHINJA	2.88m ²
3	KUPATILO	3.21m ²
4	DNEVNA SOBA	19.50m ²
5	TERASA-OSTAVA	5.41m ²
6	SPAVAĆA SOBA	8.37m ²
UKUPNO STAN 18a :		41.42m²
		- 3% (40.17m²)

OSNOVA POTKROVLJA



ulica Ćirila i Metodija br.50-52-54

ULAZ A: POTKROVLJE/STAN 18a