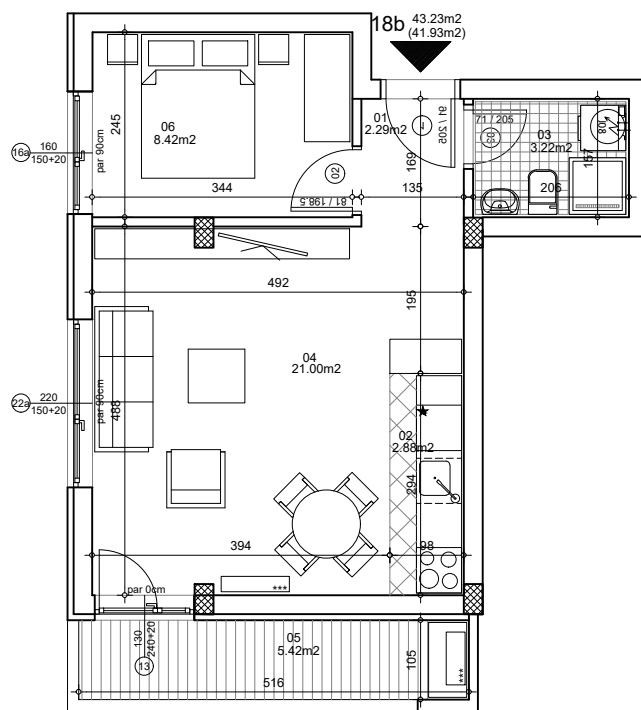




**osnova stana**  
**R = 1:100**

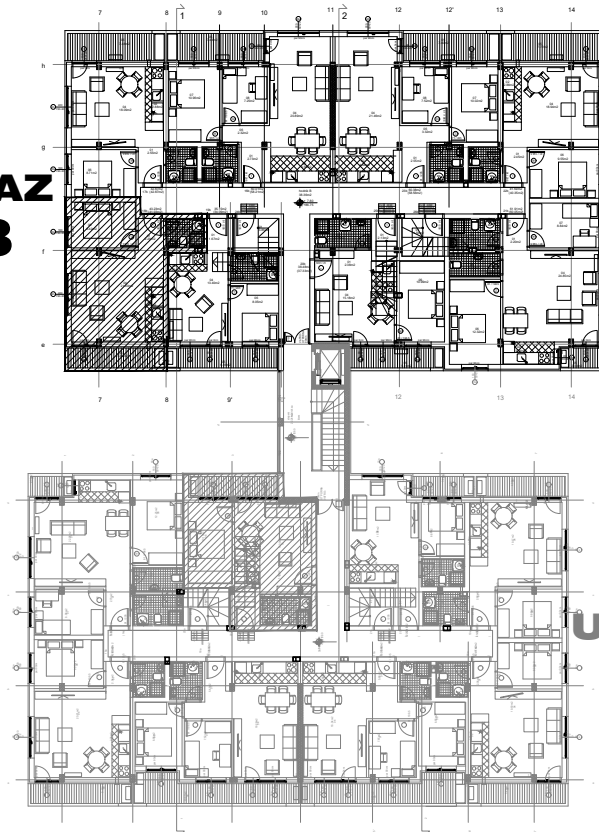


**STAN 18b DVOSOBAN**

<b>1</b>	<b>ULAZNI HODNIK</b>	2.29m <sup>2</sup>
<b>2</b>	<b>KUHINJA</b>	2.88m <sup>2</sup>
<b>3</b>	<b>KUPATILO</b>	3.22m <sup>2</sup>
<b>4</b>	<b>DNEVNA SOBA</b>	21.00m <sup>2</sup>
<b>5</b>	<b>TERASA-OSTAVA</b>	5.42m <sup>2</sup>
<b>6</b>	<b>SPAVAĆA SOBA</b>	8.42m <sup>2</sup>
<b>UKUPNO STAN 18b :</b>		<b>43.23m<sup>2</sup></b>
		<b>- 3% (41.93m<sup>2</sup>)</b>

**OSNOVA POTKROVLJA**

**ULAZ B**



**ULAZ A**



**ulica Ćirila i Metodija br.50-52-54**

**ULAZ A: POTKROVLJE/STAN 18b**