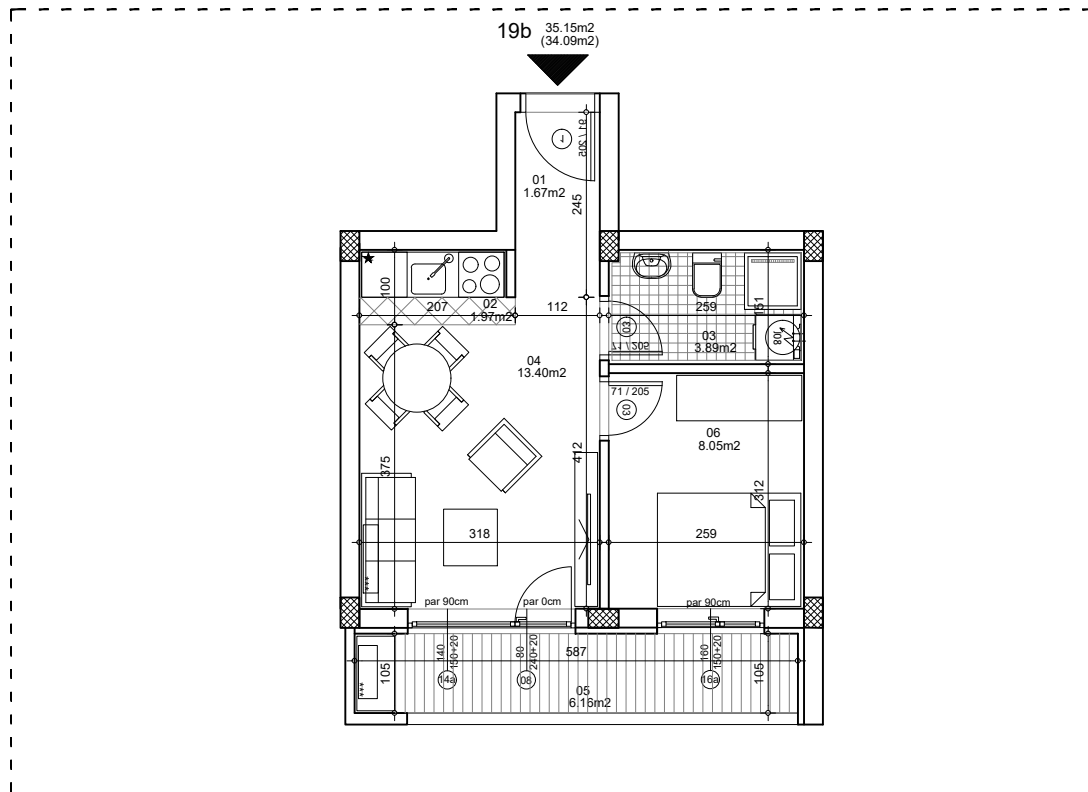




**osnova stana**  
**R = 1:100**



**STAN 19b DVOSOBAN**

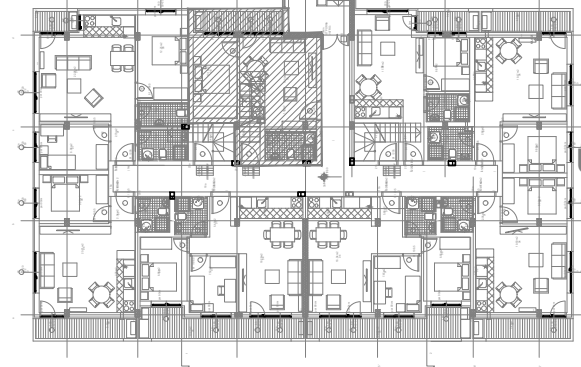
<b>1</b>	<b>ULAZNI HODNIK</b>	1.67m <sup>2</sup>
<b>2</b>	<b>KUHINJA</b>	1.97m <sup>2</sup>
<b>3</b>	<b>KUPATILO</b>	3.89m <sup>2</sup>
<b>4</b>	<b>DNEVNA SOBA</b>	13.40m <sup>2</sup>
<b>5</b>	<b>TERASA-OSTAVA</b>	6.16m <sup>2</sup>
<b>6</b>	<b>SPAVAĆA SOBA</b>	8.05m <sup>2</sup>
<b>UKUPNO STAN 19b :</b>		<b>35.15m<sup>2</sup></b>
		<b>- 3% (34.09m<sup>2</sup>)</b>

**OSNOVA POTKROVLJA**

**ULAZ B**



**ULAZ A**



**ulica Ćirila i Metodija br.50-52-54**

**ULAZ A: POTKROVLJE/STAN 19b**