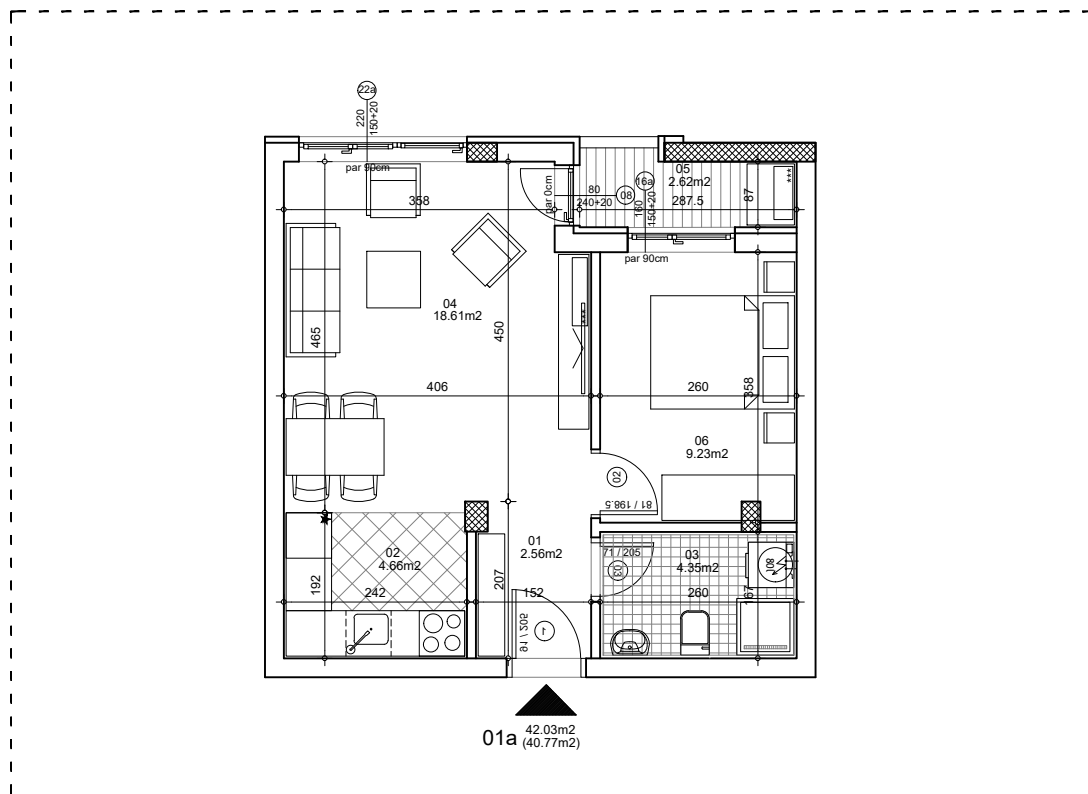




osnova stana
R = 1:100

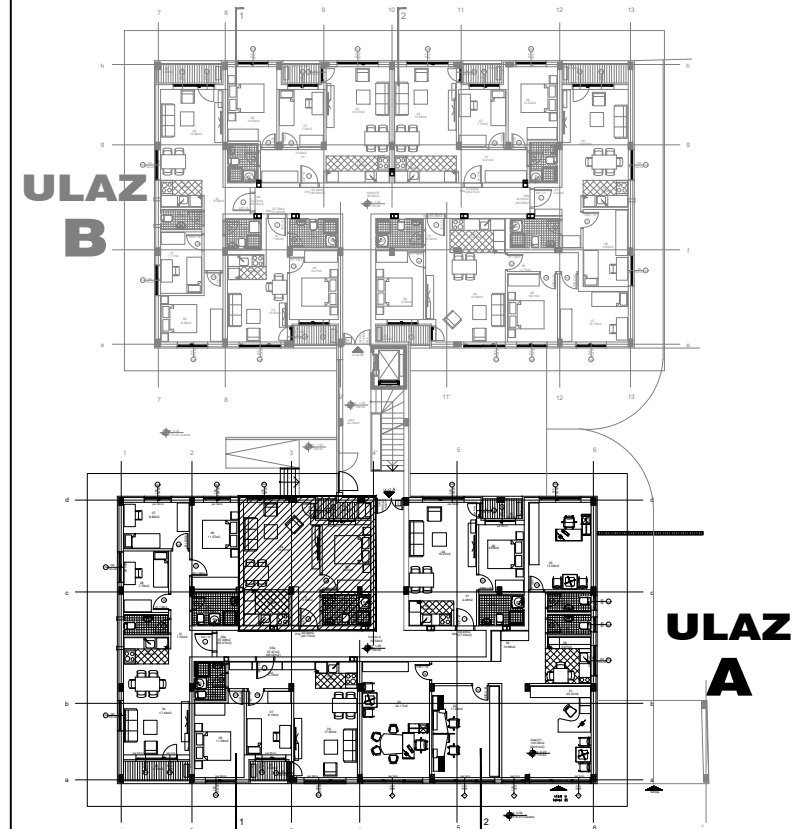


ulica Ćirila i Metodija br.50-52-54

STAN 1a DVOSOBAN

| | | |
|-------------------------|----------------------|----------------------------------|
| 1 | ULAZNI HODNIK | 2.56m ² |
| 2 | KUHINJA | 4.66m ² |
| 3 | KUPATILO | 4.35m ² |
| 4 | DNEVNA SOBA | 18.61m ² |
| 5 | TERASA | 2.62m ² |
| 6 | SPAVAĆA SOBA | 9.23m ² |
| UKUPNO STAN 1a : | | 42.03m² |
| | | - 3% (40.77m²) |

OSNOVA PRIZEMLJA



ULAZ A: PRIZEMLJE/STAN 1a