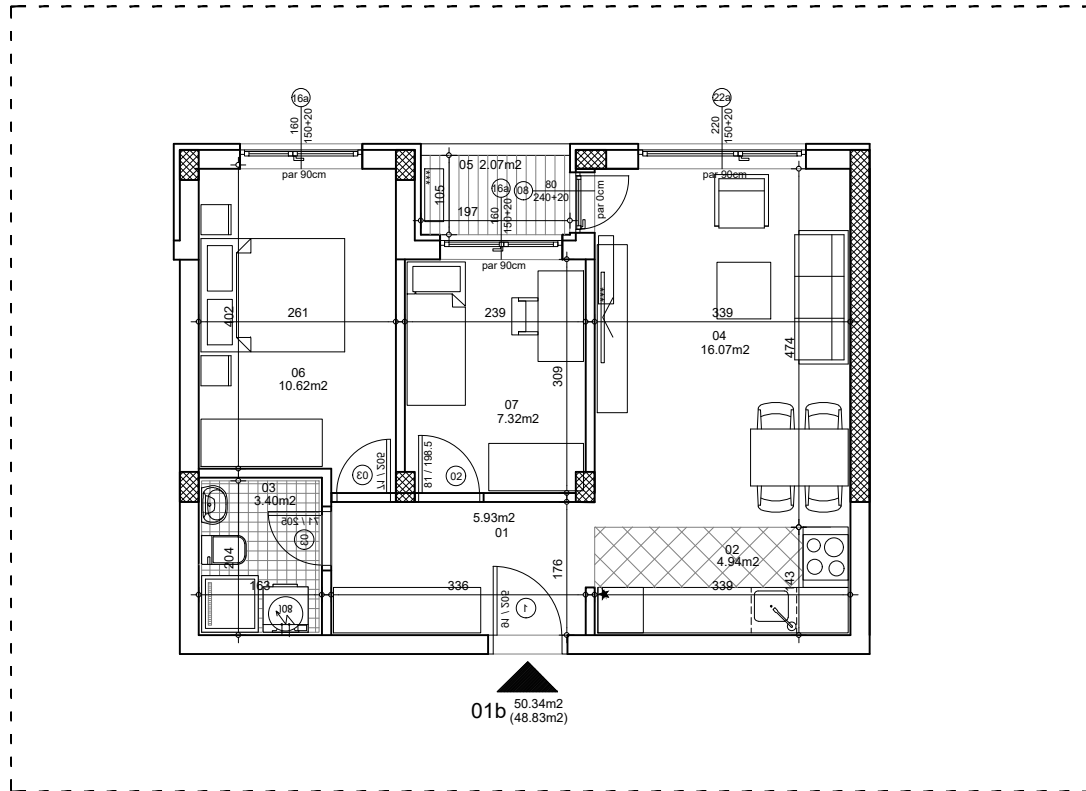




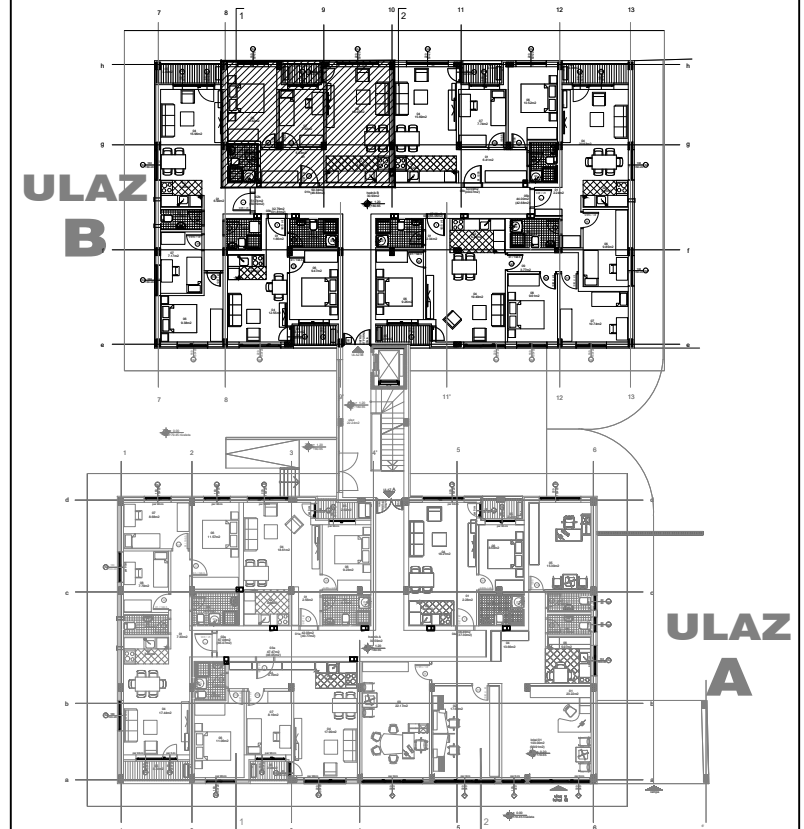
osnova stana
R = 1:100



STAN 1b TROSOBAN

1	ULAZNI HODNIK	5.93m ²
2	KUHINJA	4.94m ²
3	KUPATILO	3.40m ²
4	DNEVNA SOBA	16.07m ²
5	TERASA	2.07m ²
6	SPAVAĆA SOBA	10.62m ²
7	SPAVAĆA SOBA	7.32m ²
UKUPNO STAN 1b :		50.34m²
		- 3% (48.83m²)

OSNOVA PRIZEMLJA



ulica Ćirila i Metodija br.50-52-54

ULAZ B: PRIZEMLJE/STAN 1b