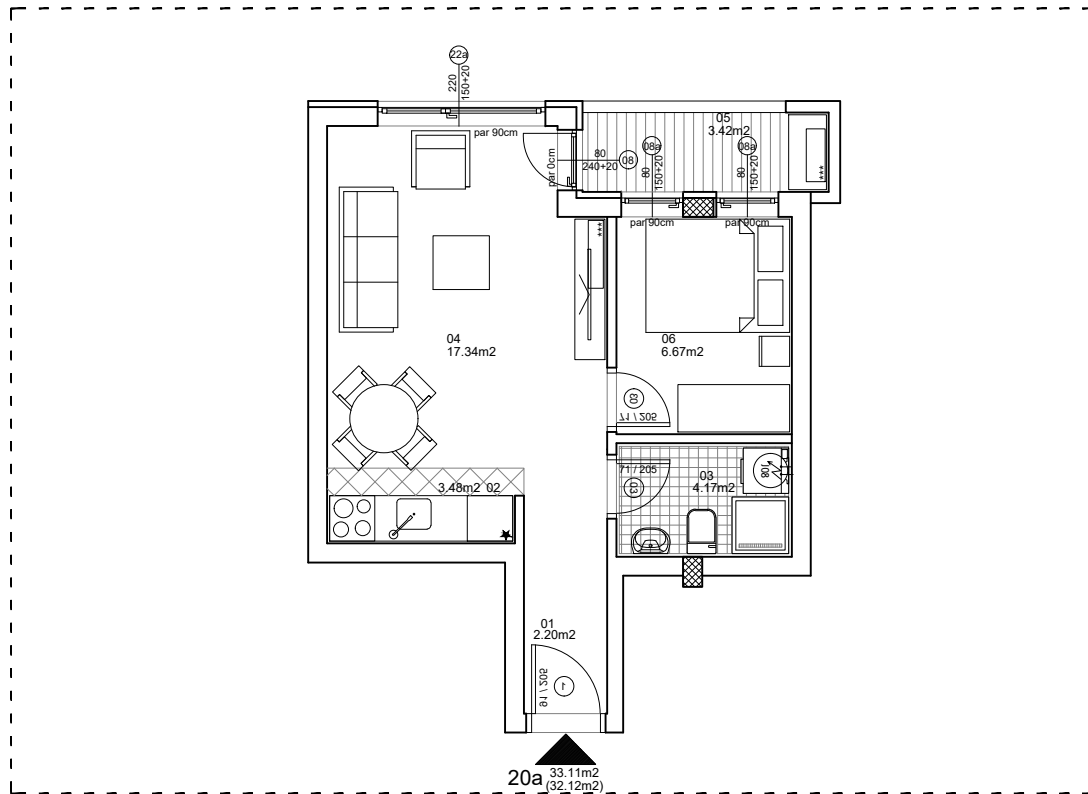




**osnova stana
R = 1:100**

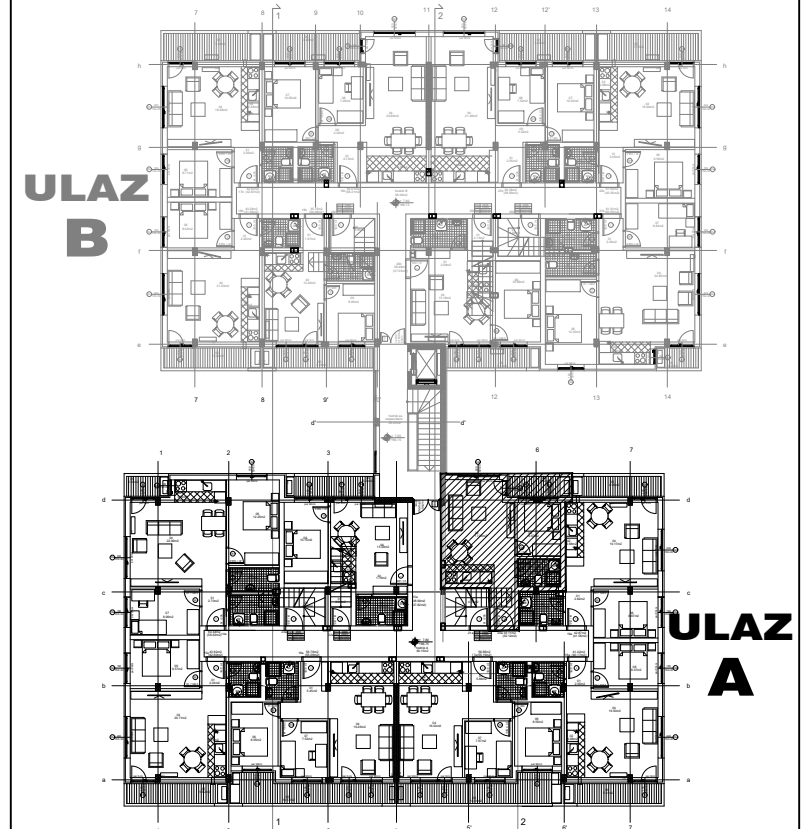


ulica Ćirila i Metodija br.50-52-54

STAN 20a DVOSOBAN

1	ULAZNI HODNIK	2.20m ²
2	KUHINJA	3.48m ²
3	KUPATILO	4.17m ²
4	DNEVNA SOBA	17.34m ²
5	TERASA-OSTAVA	3.42m ²
6	SPAVAĆA SOBA	6.67m ²
UKUPNO STAN 20a :		33.11m²
		- 3% (32.12m²)

OSNOVA POTKROVLJA



ULAZ A: POTKROVLJE/STAN 20a