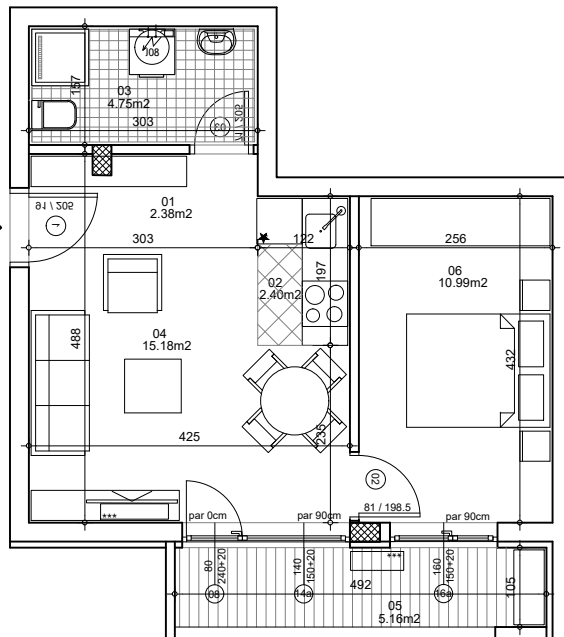




osnova stana
R = 1:100

20b
38.48m²
(37.33m²)

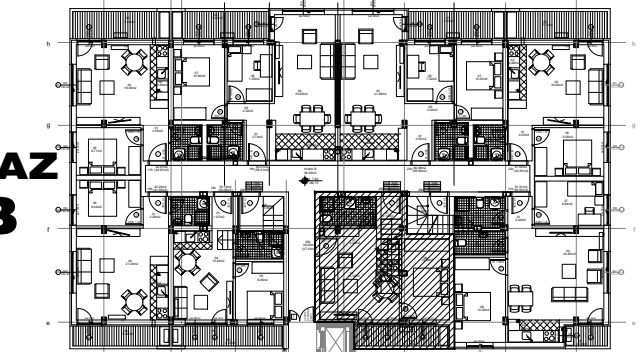


STAN 20b DVOSOBAN

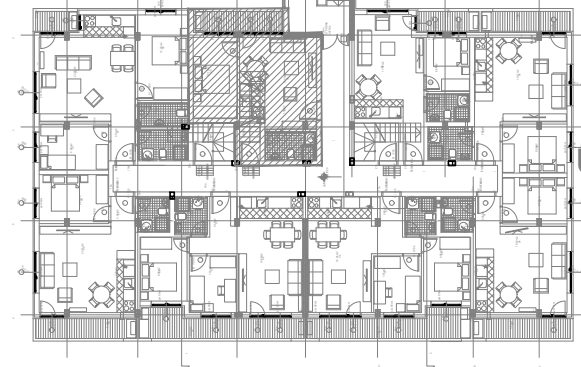
1	ULAZNI HODNIK	2.38m ²
2	KUHINJA	2.40m ²
3	KUPATILO	4.75m ²
4	DNEVNA SOBA	15.18m ²
5	TERASA-OSTAVA	5.16m ²
6	SPAVAĆA SOBA	10.99m ²
UKUPNO STAN 20b :		38.48m²
		- 3% (37.33m²)

OSNOVA POTKROVLJA

ULAZ B



ULAZ A



ulica Ćirila i Metodija br.50-52-54

ULAZ A: POTKROVLJE/STAN 20b