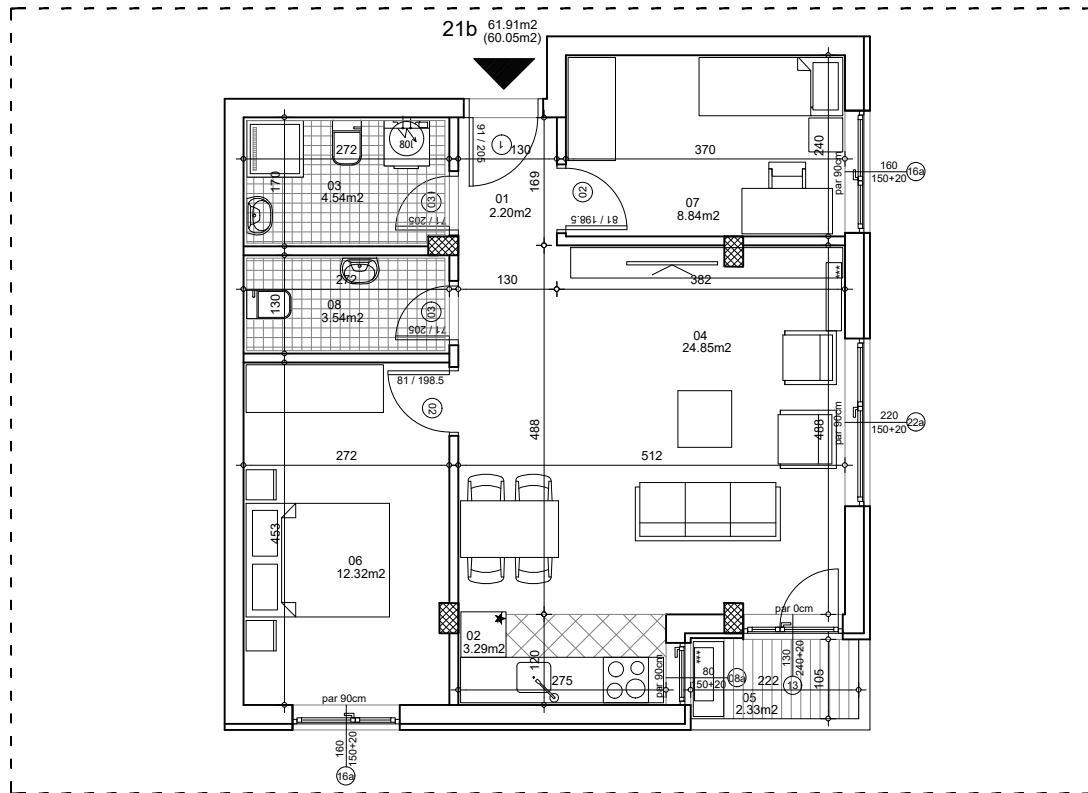




osnova stana
R = 1:100

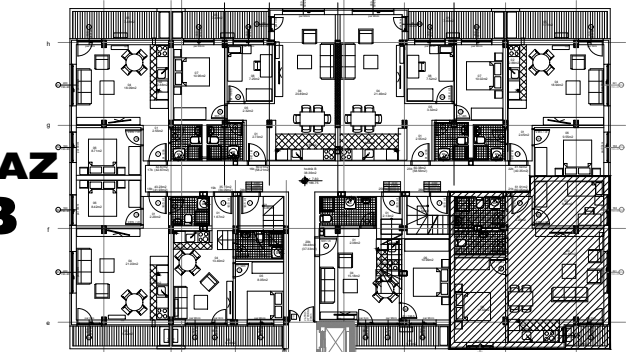


STAN 21b TROSOBAN

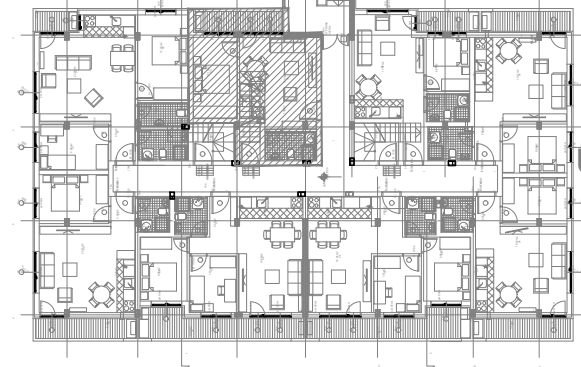
1	ULAZNI HODNIK	2.20m ²
2	KUHINJA	3.29m ²
3	KUPATILO	4.54m ²
4	DNEVNA SOBA	24.85m ²
5	TERASA	2.33m ²
6	SPAVAĆA SOBA	12.32m ²
7	SPAVAĆA SOBA	8.84m ²
8	TOALET	3.54m ²
UKUPNO STAN 21b :		61.91m²
		- 3% (60.05m²)

OSNOVA POTKROVLJA

**ULAZ
B**



**ULAZ
A**



ulica Ćirila i Metodija br.50-52-54

ULAZ A: POTKROVLJE/STAN 21b