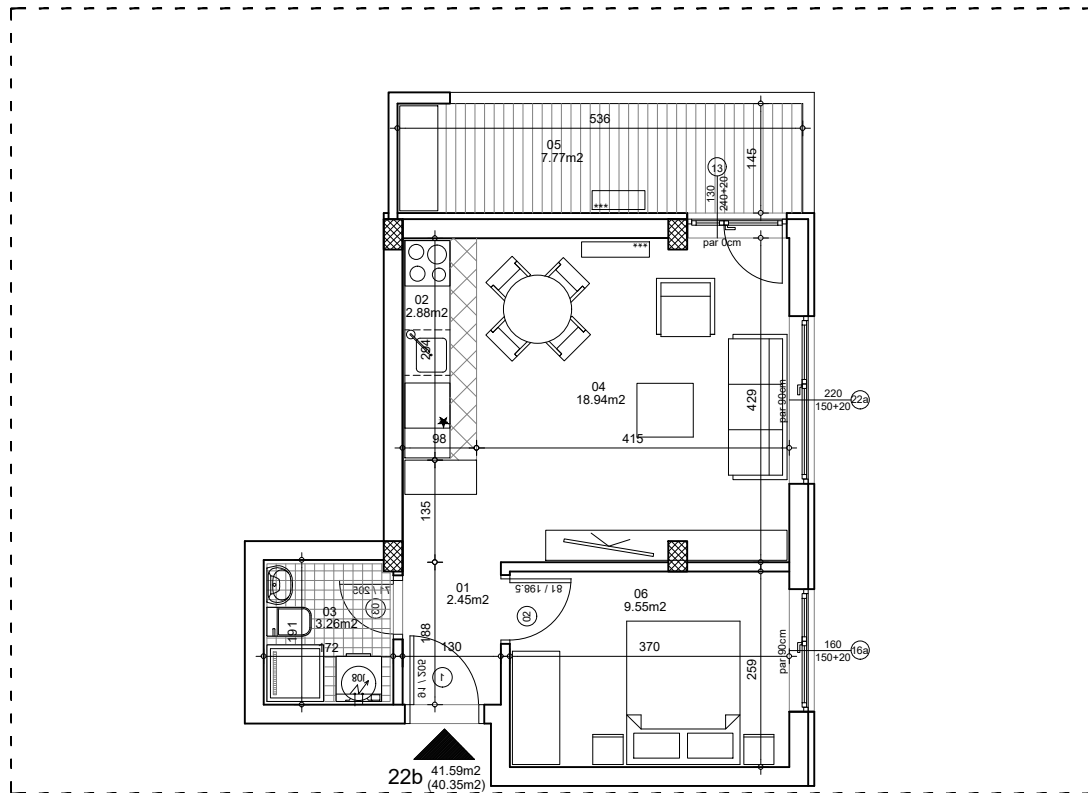




osnova stana
R = 1:100

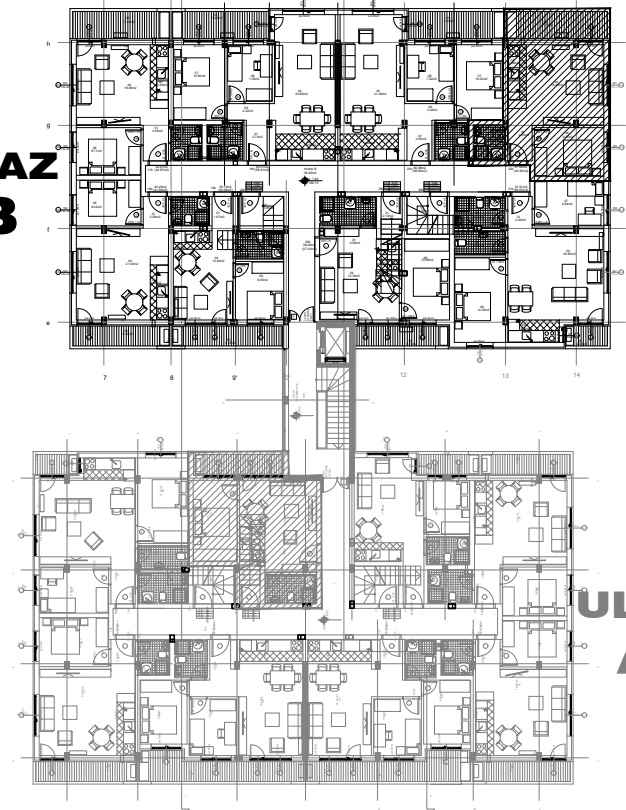


STAN 22b DVOSOBAN

1	ULAZNI HODNIK	2.45m ²
2	KUHINJA	2.88m ²
3	KUPATILO	3.26m ²
4	DNEVNA SOBA	18.94m ²
5	TERASA-OSTAVA	7.77m ²
6	SPAVAĆA SOBA	9.55m ²
UKUPNO STAN 22b :		41.59m ²
		- 3% (40.35m²)

OSNOVA POTKROVLJA

ULAZ B



ULAZ A



ulica Ćirila i Metodija br.50-52-54

ULAZ A: POTKROVLJE/STAN 22b